

The Literary Social Club

A Place to Gather & Celebrate since 1915

9.21.2024

At The Social Club you will experience the 5-star customer service from the same owners of the Palmer House Stable at your fingertips.

The Literary Hotel is the backdrop for our unique 1915 auditorium repurposed. classroom for all your business events and Holiday Parties!

Types of Events Weekdays, Weekends & Holidays

Wedding, Rehearsal dinners, Receptions,
Business meetings and Seminars,
Holiday Parties, Combined with Hotel event.

Friday, Saturday & Sunday Event timeslots offered are within A. 9am -2pm OR B. 3pm-7pm

You can choose any amount of time you want within these time slots.

Begin Here: Time includes set up and cleanup.

1. Choose the amount of time between A or B.
2. Choose a date and decide how many hours.
3. Two hours minimum \$250.00. each additional hour is \$100.00 each.
4. For an 8-hour event please inquire.

Example: 4 hours of time chosen; 2-hour min. \$250 + 2 added hours \$200= Total \$450.00

*On certain dates our 4-hour fee is \$350 please inquire

Capacity:

48 guests is capacity.

Details for all Social Club Events

- Bring your own beer, and wine.
- Bring in food or choose a cater of your choice.
- We provide 5' round tables seating 8, 2-6' folding tables. and chairs for up to 50 guests.
- Optional Liquor Service with signature drinks, & mixed cocktails.
- The client needs to provide tablecloths, or we will rent white linen for \$8.00 each.
- Air conditioned and heated, public ADA rest rooms in the hallway.

Allow our creative owner Al Wells, of the Palmer House Stable and his experienced team of professionals and vendors to design a custom or themed event where they will "go out of their way" to make your event memorable.

Clients Agree to do during their Event:

- Clients arrange and set up and take down tables and stack chairs.
- Cardboard broken down and carried to the RECYCLE dumpster do not put in garbage cans.
- We have 5' round tables and chairs that you can set up and take down when finished.
- At time of Cleanup and before leaving: Tables folded and rolled to the east wall where they were when you arrived. The chairs should lie flat on the carts provided with seats facing up. 50 chairs per cart.
- All items brought into the building including food, containers, decorations, and props. must be removed upon the completion of the
- Before leaving: Take the garbage bag out of the can, check to make sure it is not leaking on the floor and put it in the dumpster in the parking lot on Market Street.
- All events must end by 8pm and the space vacated on time.
- INSURANCE REQUIREMENTS: Contact your insurance agent.

For all events that take place at the Social Club, a Certificate of Insurance showing liability limits will be required 30 days before the event. It should also list Uptown Main, LLC and the Social Club as Additional Insureds if possible.

I would like to suggest you schedule a tour of The Social Club by just going online to <https://calendly.com/al--palmerhousestable/> choose a day and time that works for you.

Note: We need to operate on a first-come, first-served basis, due to the volume of requests we receive. Meaning that we cannot hold your date and you should not assume your date will be available if you hesitate too long to book your date.

Please contact us for updates on availability.

DIRECTIONS:

THE SOCIAL CLUB is located at 130 South Dubuque St. in the Literary Hotel main level Solon Iowa 52333, about 9 miles north of Iowa City/University of Iowa and approximately 19 miles southeast of Cedar Rapids.

FROM Iowa City:

Take Highway 1 North

As you enter Solon turn LEFT on East Short Street.

Look to the right (North) one block from the HWY 1

FROM Cedar Rapids:

Take I-380 South

Take exit 10 toward Shueyville East on 120th Street NE.

Stay on 120th Street NE.to T intersection and stop sign.

Turn right south on Ely Rd.

Turn left onto Route 382/County Rd F16

Continue onto W Main St.

Turn right onto South Dubuque Street. Your destination will be on the corner of South Dubuque Street and East Short Street.

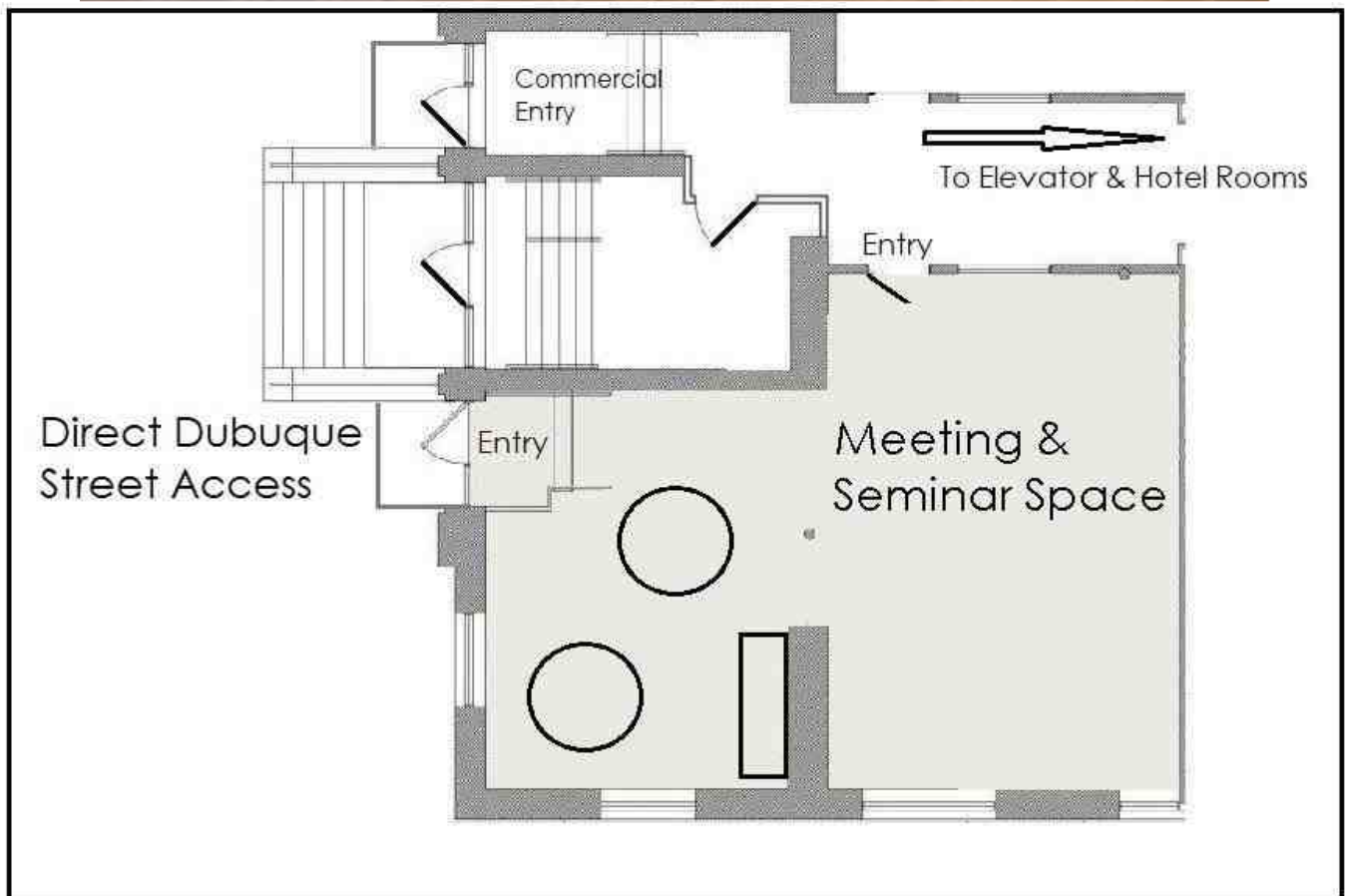
FROM Mt Vernon and Lisbon:

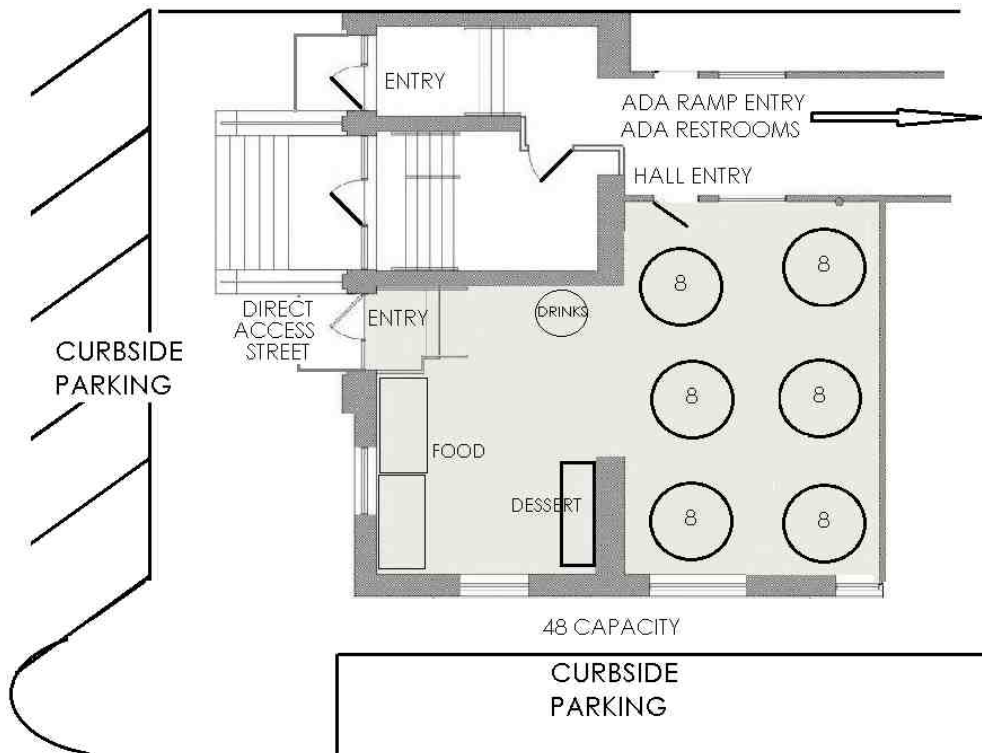
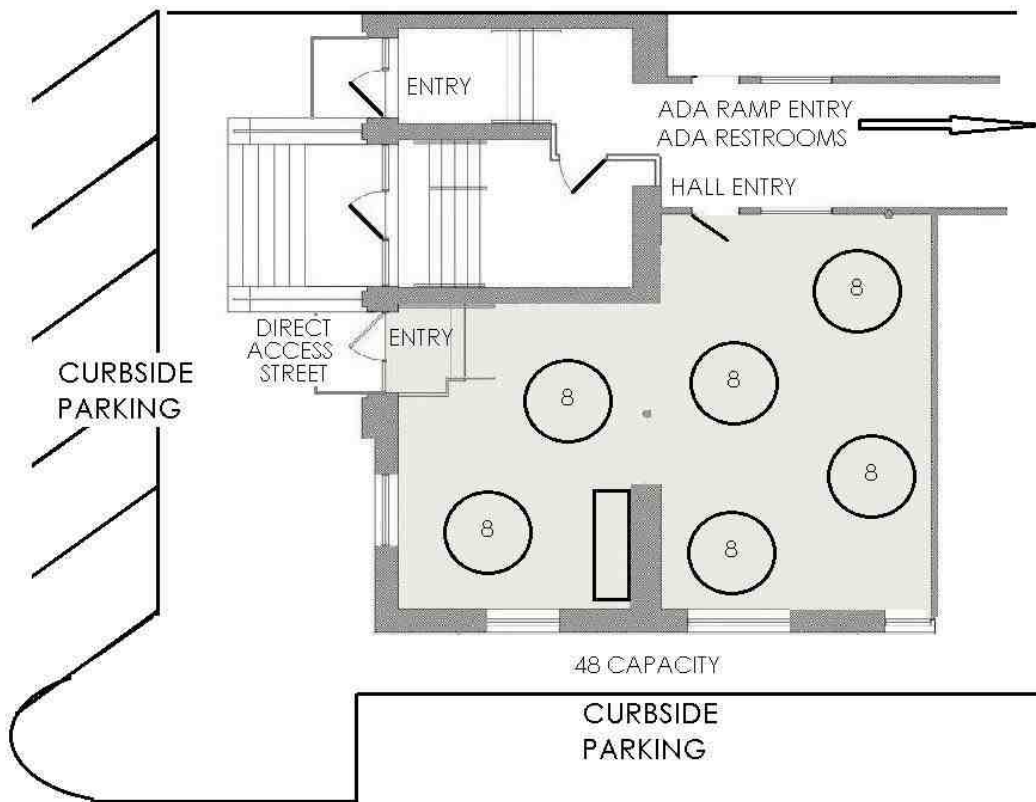
Take HWY 1 South.

As you enter Solon turn RIGHT on East Short Street. Literary Hotel lobby entrance.



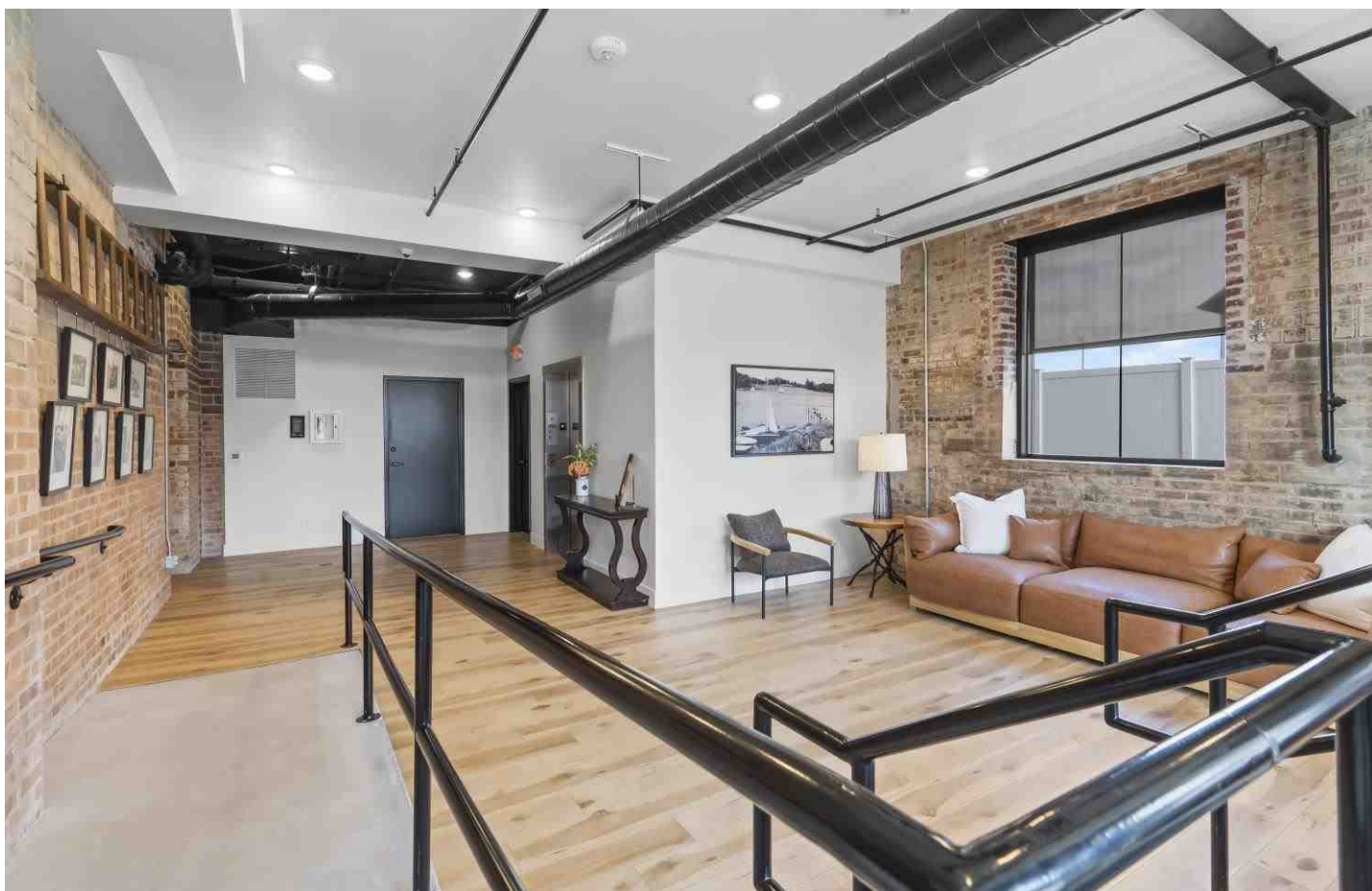




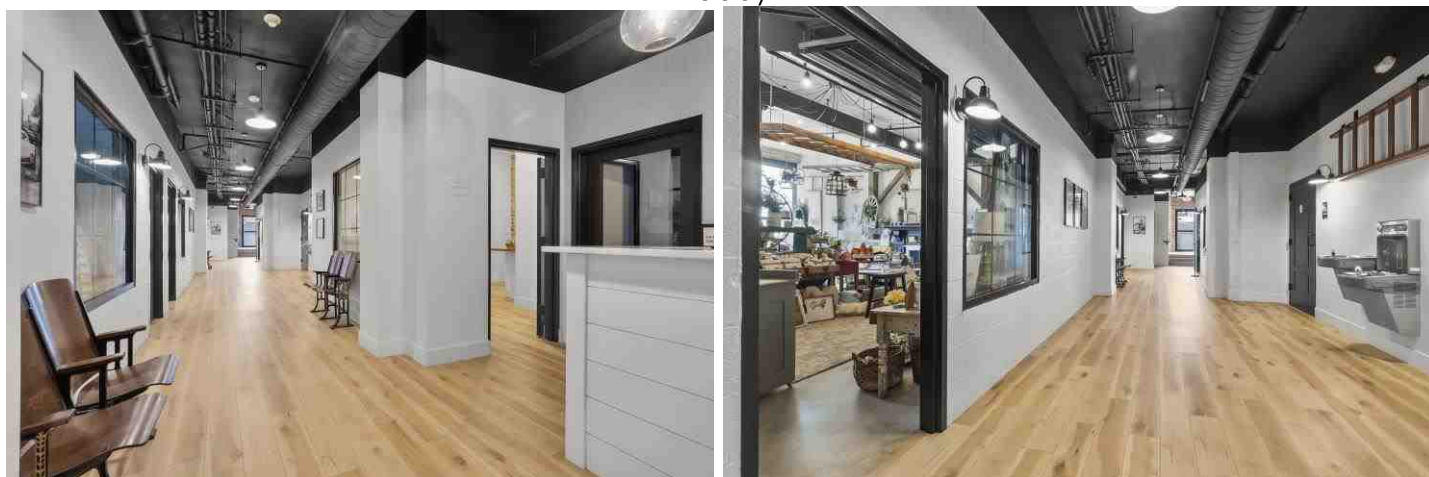


THE LITERARY SOCIAL CLUB

A Place to Gather & Celebrate since 1915



Lobby





BABY SHOWER



WEDDING & RECEPTION



THE LITERARY SOCIAL CLUB

A Place to Gather since 1915

Page 9 of 9