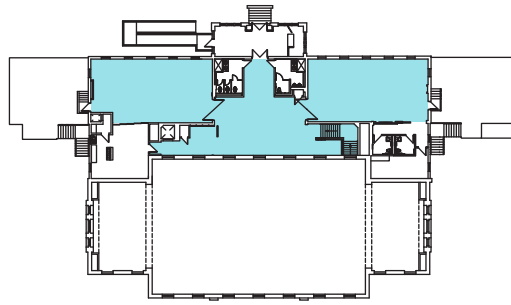
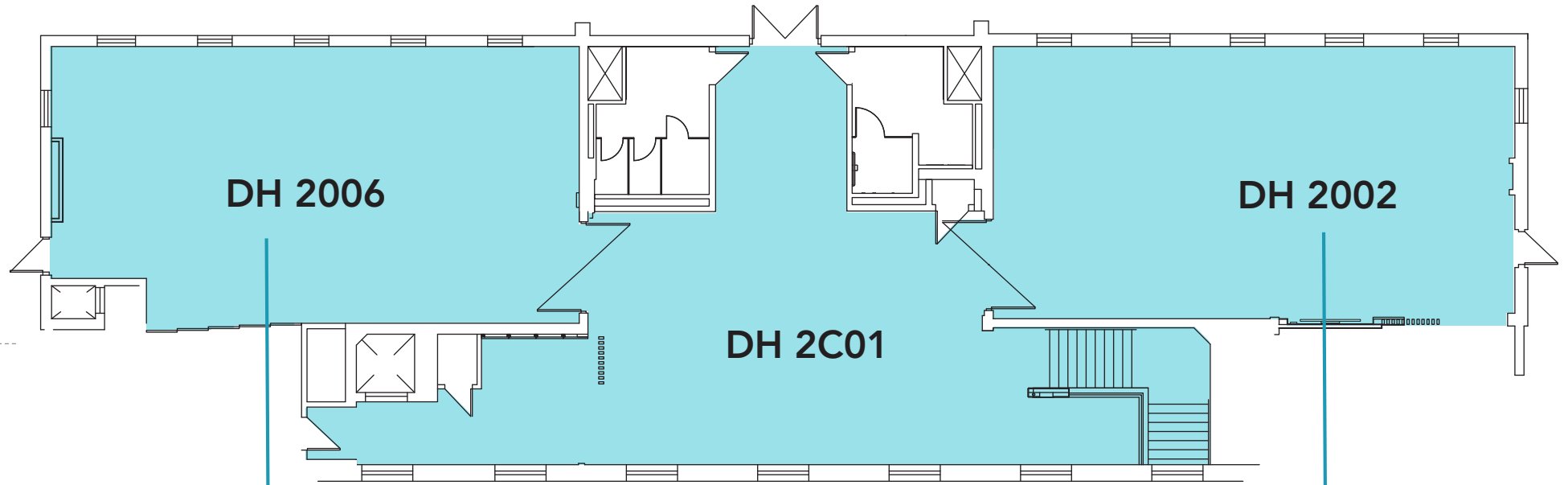


Gushue Hall



Update: April 1, 2023

Prices in Canadian Dollars, plus 15% tax

*Please note capacities are estimates and may change based on set-up requirements.

DH 2006
Area: 1100 sqft

Capacities
Banquet: 60
Reception: 150
Theatre: 70
Classroom: 36
Boardroom: 48

BASE RATE \$600/day
\$300/half-day
\$70/additional hour

DH 2006 + DH 2C01
Area: 2050 sqft

Capacities
Reception: 210

BASE RATE \$800/day
\$400/half-day
\$100/additional hour

DH 2002 + DH 2C01
Area: 2050 sqft

Capacities
Reception: 210

BASE RATE \$800/day
\$400/half-day
\$100/additional hour

DH 2002
Area: 1100 sqft

Capacities
Banquet: 60
Reception: 150
Theatre: 70
Classroom: 36
Boardroom: 48

BASE RATE \$600/day
\$300/half-day
\$70/additional hour

DH 2006 + DH 2C01 + DH 2002
Area: 3150 sqft

Banquet: 120
Reception: 250
Theatre: 140

Classroom: 72
Boardroom: 96

BASE RATE \$1,200/day | \$600/half-day | \$120/additional hour