



MY POSSIBILITIES
LEARN LIVE GROW

SPACE + PRICING GUIDE

Employment Innovations School (EIS)

Carol's Cafe (with Main Lobby, EIS restrooms, & Serving Area)

- Over 7,500 s.f.
- Weekend rate: \$5,050/day
- Weekday rate: \$2,530/day

Meeting rooms (eight total)

900-980-square-foot rooms (two available)

- Weekend rate: \$850/day
- Weekday rate: \$430/day

500-570-square-foot rooms (five available)

- Weekend rate: \$530/day
- Weekday rate: \$270/day

552-square-foot room - (one available)

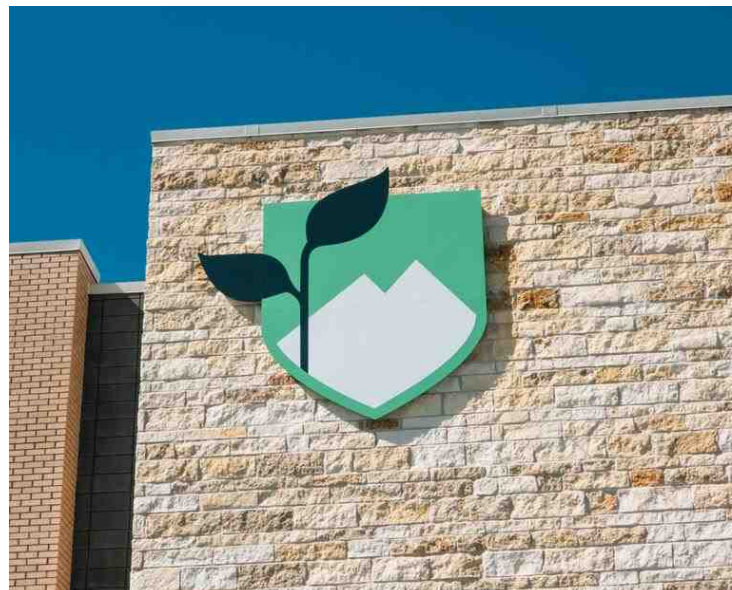
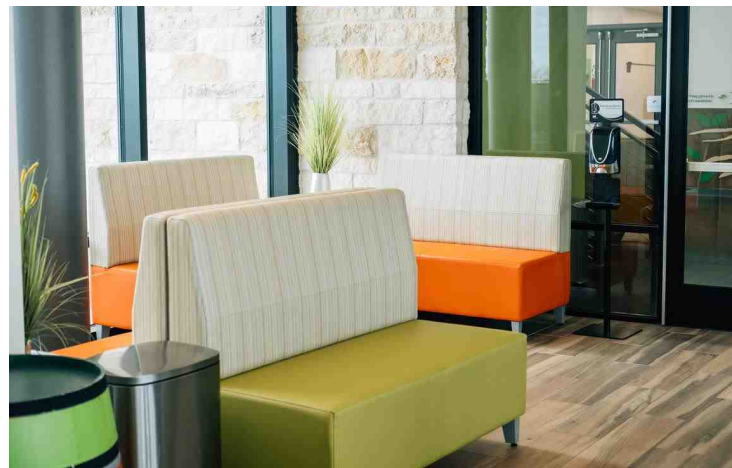
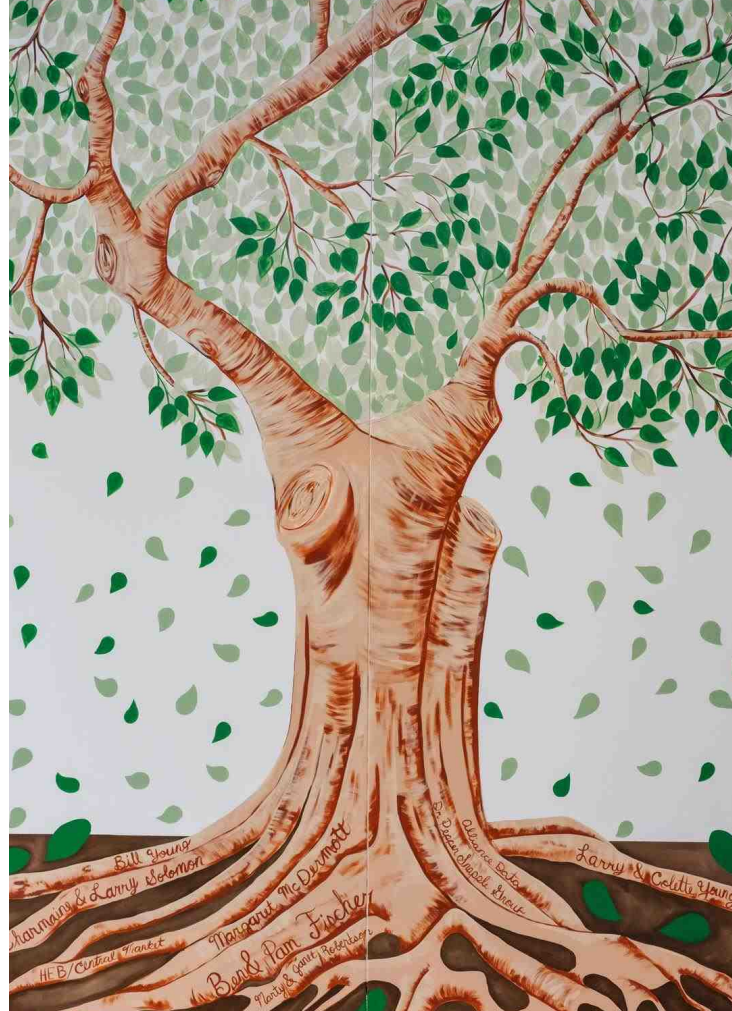
- Weekend rate: \$1050/day
- Weekday rate: \$530/day

Kyle's Welcome Center

- 1,196 s.f.
- Weekend rate: \$1,050/day
- Weekday rate: \$530/day

Friendship Circle (outdoor courtyard)

- Weekend rate: \$2,050/day
- Weekday rate: \$1,030/day





MY POSSIBILITIES
LEARN LIVE GROW

SPACE + PRICING GUIDE

Continued

Second-level covered patio

- 1,886 s.f.
- Weekend rate: \$2,050/day
- Weekday rate: \$1,030/day

Culinary Arts Kitchen

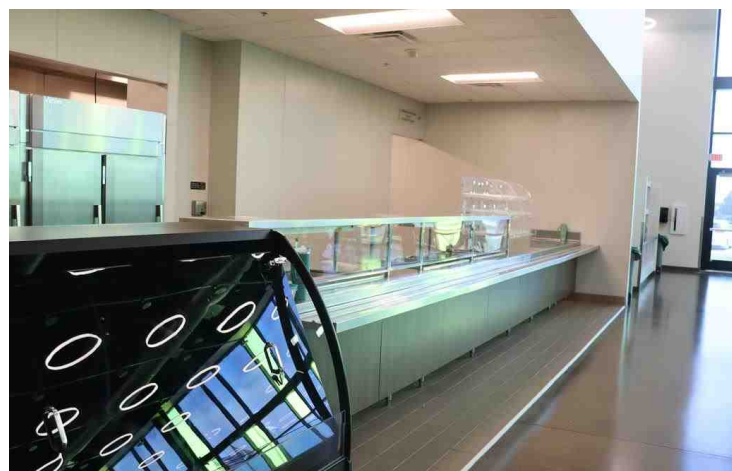
- Over 2,457 s.f.
- \$25/hour

All prices are subject to change.

Rental times are flexible on weekdays after 6:30 p.m. or anytime on the weekends.

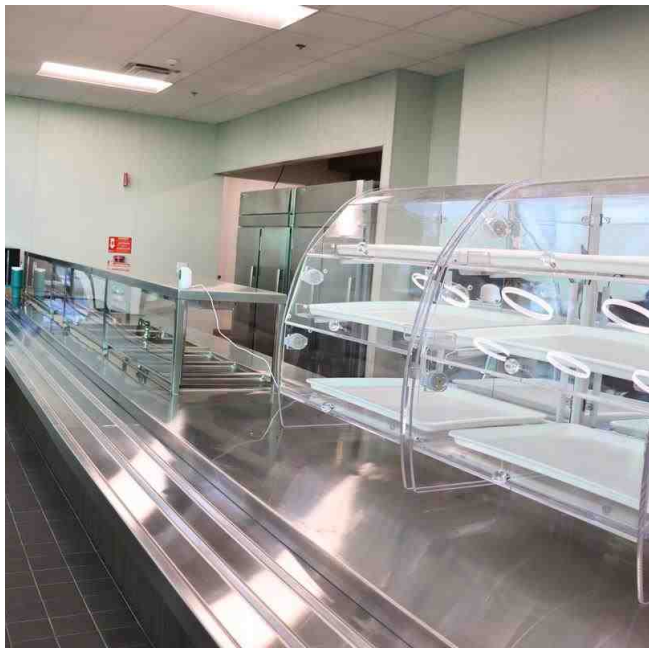
Restroom access in two locations, depending on which spaces are rented.

Nonprofit rates available upon request.



Carol's Cafe

81' x 79'
 35 Round tables
 210 Chairs (six per table)
 Stage
 Ramp
 Podium
 Table cloths (upon request)
 Two wireless microphones
 Two screens
 Lectern
 PA system



Keurig Dr Pepper Culinary Arts Serving Area

32' x 5'
 One grab-n-go refrigerated case
 One silverware container
 One serving counter
 One refrigerated cold pan
 Two hot food well assembly units
 One soup well adapter pan
 One sneeze guard assembly
 Two movable display case
 One P.O.S. unit (don't have this)
 One chair
 One trash and recycle station

Preparation + Catering Area

Hand sink
 One catering/worktable
 One wall-mounted over shelf
 One wall-mounted utensil rack
 One 30-quart mixer
 One trash receptacle
 One prep table with sinks
 One wall-mounted over shelf
 One food processor
 One slicer



Beverage Station Area

Two mobile heated cabinets
 One ice machine
 One water filter system
 One floor trough
 One beverage counter
 One wall-mounted over shelf
 One water and ice station
 One coffee brewer
 One tea brewer



Main Cookline

10 burner range/ovens
 One griddle
 One refrigerated equipment stand
 One char-broiler
 One heated dump station
 One fryer
 One double-deck steamer
 One 25-gallon kettle
 One floor Trough
 One floor Trough
 One 30-gallon tilt skillet
 One double-deck convection oven
 One exhaust hood
 One fan and duct package
 One fire protection system
 One lot stainless steel wall paneling
 One worktable
 One wall-mounted over shelf
 One panini grill
 One undercover freezer
 One pass-thru heated cabinet
 One pass-thru refrigerator



Preparation + Catering Area

Hand Sink
 One catering/worktable



Covered Patio

Tables + chairs



215 Parking Spots

Uncovered



Dish Washing Area

Two trash receptacles
 One soiled dish table
 One pass window assembly
 One pre-rinse faucet
 One disposer
 One dish machine with built-in booster
 Two vent duct assemblies
 One three-compartment sink/clean dish table
 One wall-mounted shelf rack
 One wall-mounted pot rack
 One Trash receptacle
 Two clean dish shelving units
 Three storage shelving units
 Mobile worktables



Hospitality Voc Lab

35' x 28'
 Instructor desk
 Square tables (five)
 Chairs (20)
 Smart TV
 Desk and chairs along back walls (five)



Retail Voc Lab or Voc Ed Class (X3)

Instructor desk
 Tables (eight)
 Chairs (16)
 Smart TV



Voc Ed Class (X4)

Instructor desk
 Tables (eight)
 Chairs (16)
 Smart TV
 Refrigerator





Main Lobby

47' x 21'

Seating areas

Receptionist desk



Kyle's Welcome Center

52' x 23'

Piano

Seating areas



Friendship Circle

Green belt area

Picnic tables (six)

Sidewalk

Plug for outdoor stage

Basketball goals (two)

Park benches (five)

