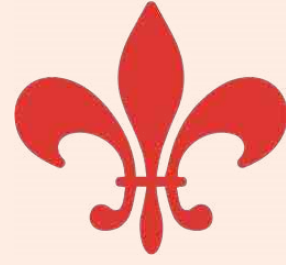


HOTEL  
**Chantelle**  
NEW YORK CITY







OUR THREE-LEVEL, MULTI-FACETED SPACE OFFERS LOUNGE SEATING AND A UNIQUE AMBIENCE THAT IS WELCOMING AND SPACIOUS.

WE ARE THE ULTIMATE CHOICE FOR SMALL AND LARGE EVENTS, AS WELL AS WEEKLY DINNER AND DRINKS.

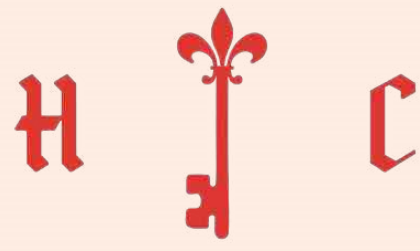
FULLY EQUIPPED WITH A STATE-OF-THE-ART SOUND SYSTEM, HOTEL CHANTELLE CAN FULFILL ALMOST ANY AUDIO AND VISUAL REQUEST.

ALL THE STYLE AND ACCOMMODATIONS NEEDED UNDER ONE ROOF FOR THE PERFECT EVENT.

**WE CAN HOST...**

Team Building  
Networking Events  
Employee Appreciation Parties  
Birthday Celebrations  
Fashion Shows  
Corporate Events

Movie Premieres  
Photo Shoots  
Buffet Dinners  
Seated Dinners  
Cocktail Receptions  
AND MANY MORE

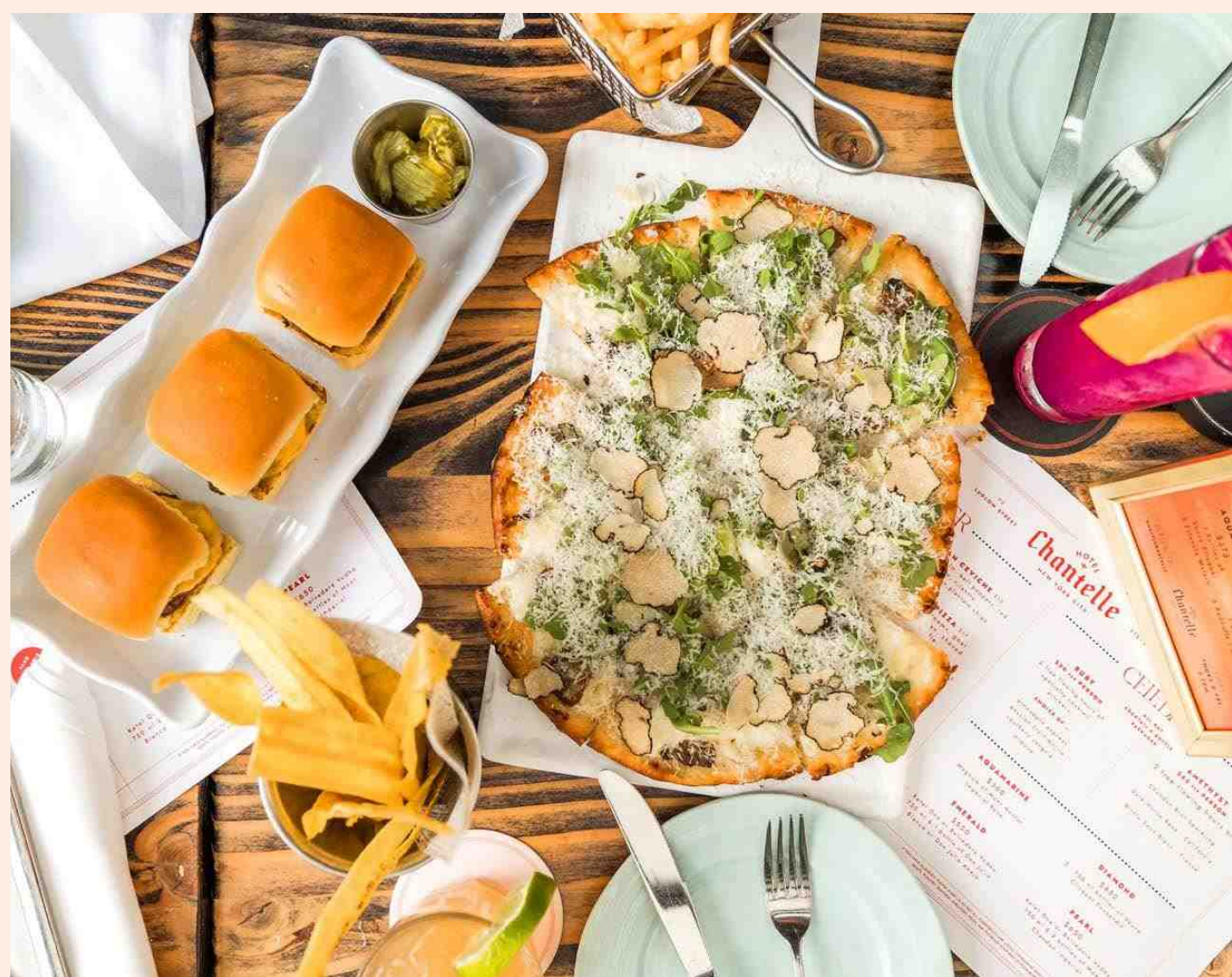
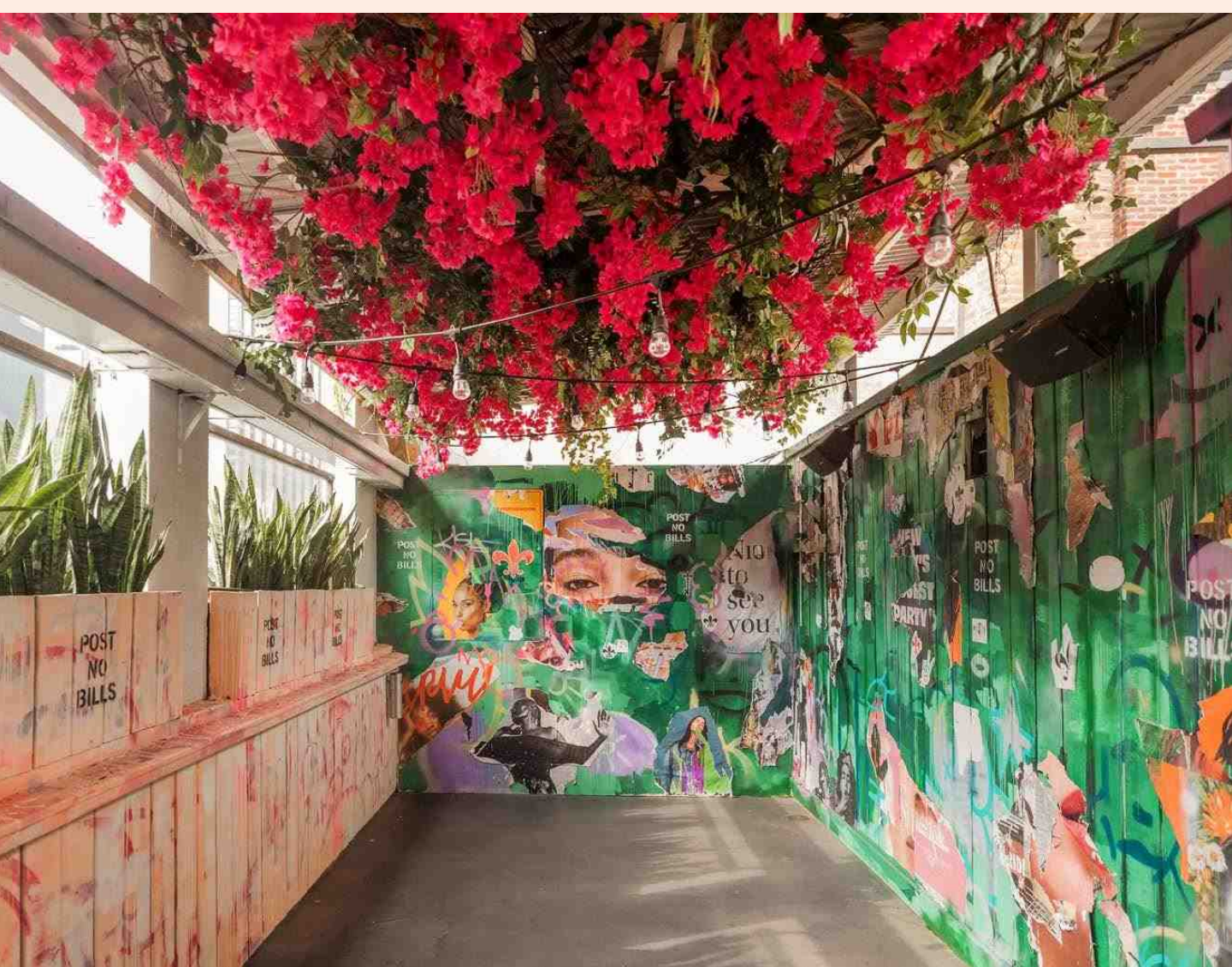


NAMED AFTER A FRENCH WORLD WAR II SAFE HOUSE,  
HOTEL CHANTELLE IS A RESTAURANT, LOUNGE AND  
EVENT SPACE LOCATED IN THE EVER BURGEONING  
SOUTH OF DELANCEY SECTION OF THE LOWER EAST  
SIDE. THE INTERIOR OF HOTEL CHANTELLE GIVES WAY  
TO A 1940S PARISIAN-STYLE BAR, A ROOFTOP  
RESTAURANT AND GARDEN WITH VIEWS OF THE  
WILLIAMSBURG BRIDGE AND AN UNDERGROUND DANCE  
DEN THAT EXUDES A NOBODY'S WATCHING VIBE.  
HOTEL CHANTELLE'S VERSATILITY ALLOWS US TO CATER  
TO A LARGE VARIETY OF EVENTS, INCLUDING MOVIE  
PREMIERE PARTIES, CHARITY EVENTS, POP-UP SHOPS  
AND CORPORATE HOLIDAY PARTIES.

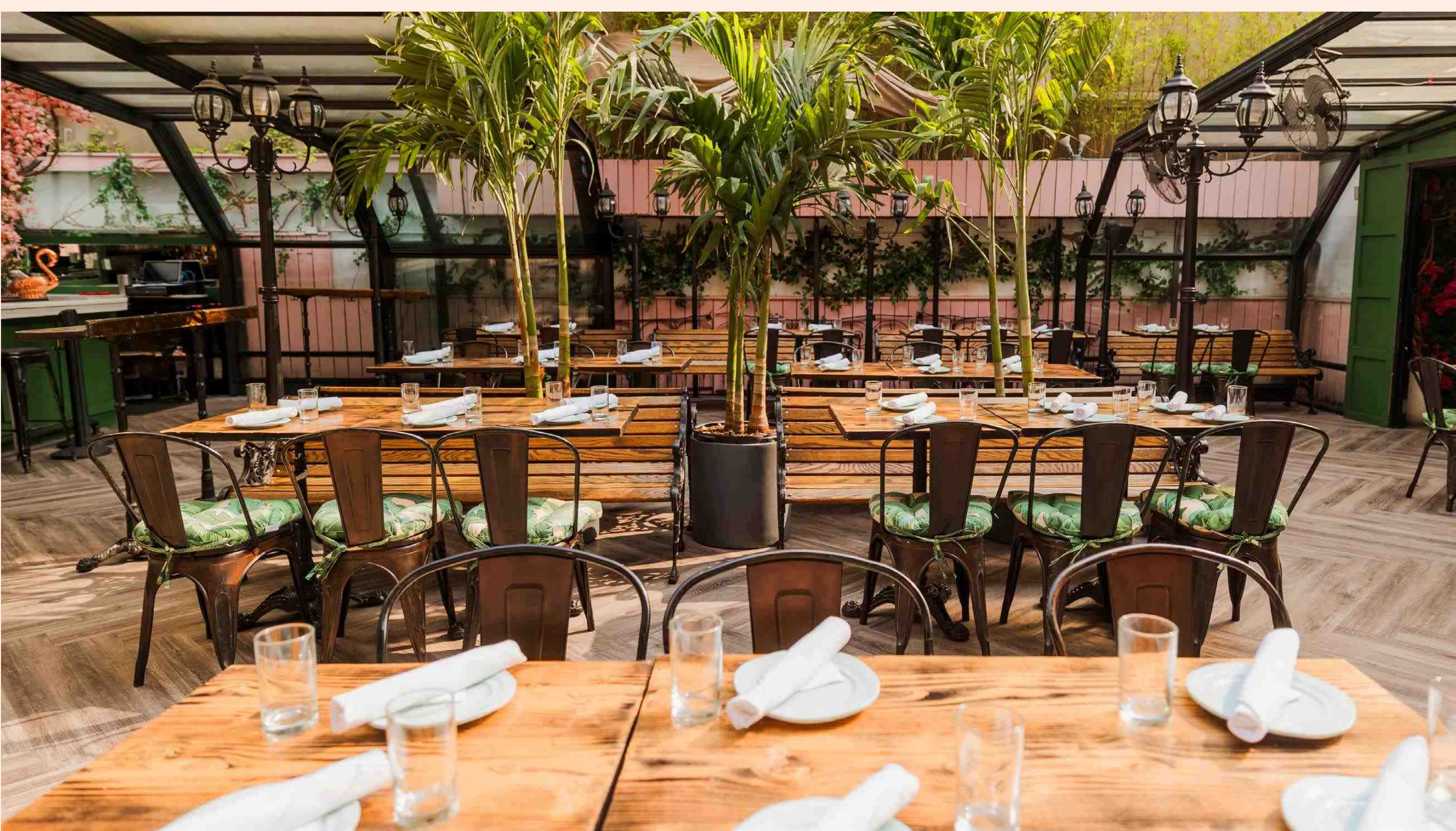




# THE ROOFTOP









# THE ROOFTOP

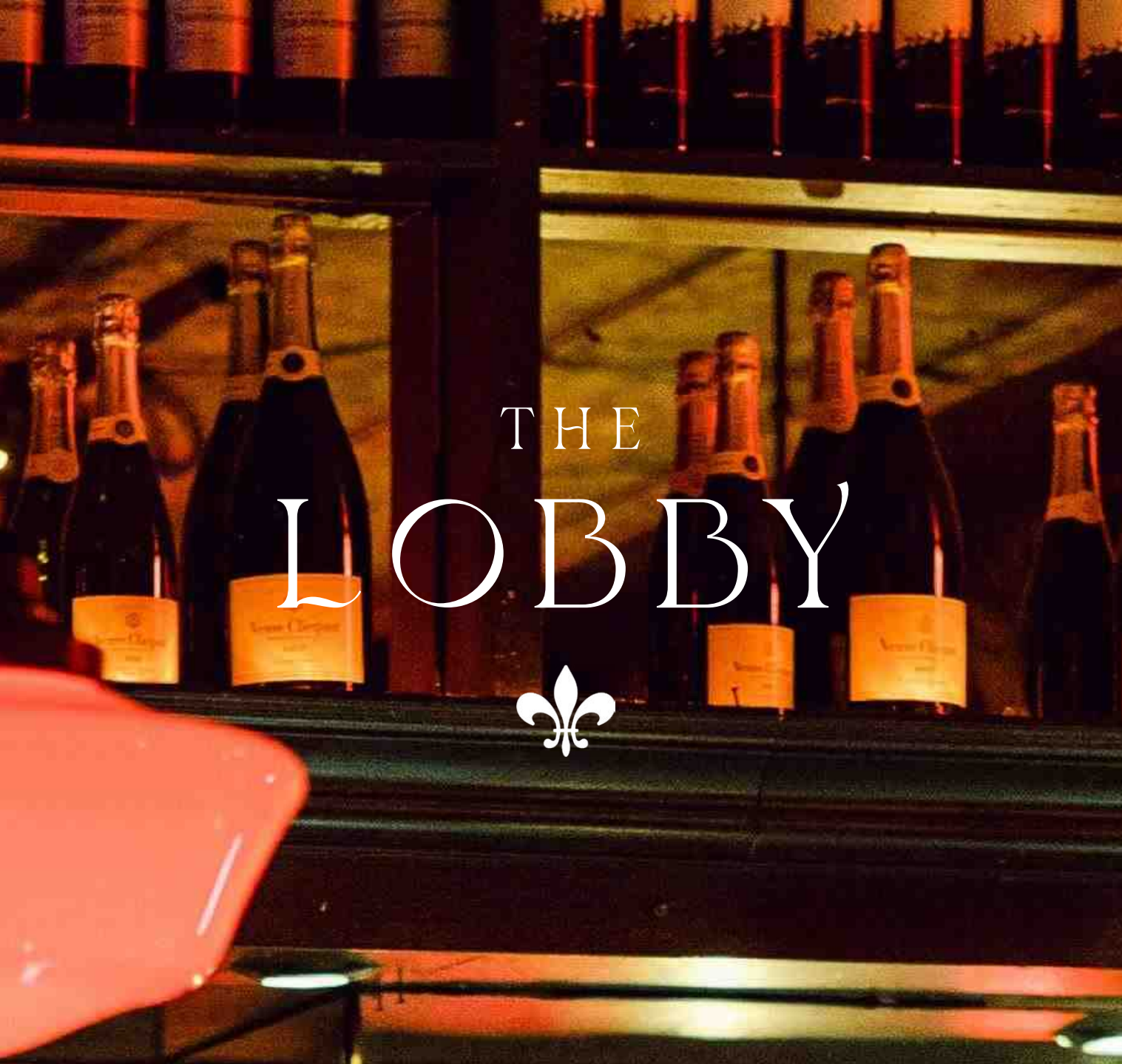


THE ROOFTOP AT HOTEL CHANTELLE TRANSPORTS YOU TO  
A PARISIAN GARDEN AS YOU EXPERIENCE A FUN SOCIAL STYLE  
MENU, AS WELL AS CHAMPAGNE AND CREATIVE COCKTAILS  
UNDER THE STARS. BOTH ELEGANT AND COMFORTABLE,  
THE ROOFTOP IS DECORATED WITH LAMP POST LIGHTING,  
PARK BENCHES AND DRAPING FLORAL GREENERIES.

## FEATURES

RETRACTABLE ROOFTOP  
CLIMATE CONTROLLED 24/7  
2000 SQUARE FEET  
DINING • FULL BAR  
DJ BOOTH







THE  
LOBBY



A PARISIAN STYLE COCKTAIL LOUNGE THAT EMANATES  
SOPHISTICATED GLAMOUR OF THE 1940S. THE LEATHER  
BANQUETTES OFFER A COMFORTABLE ESCAPE FOR THE  
NIGHT, OR A POSH SPOT TO PLAN YOUR NEXT MOVE IN  
THE CITY THAT NEVER SLEEPS.

**FEATURES**

1500 SQUARE FEET

DINING

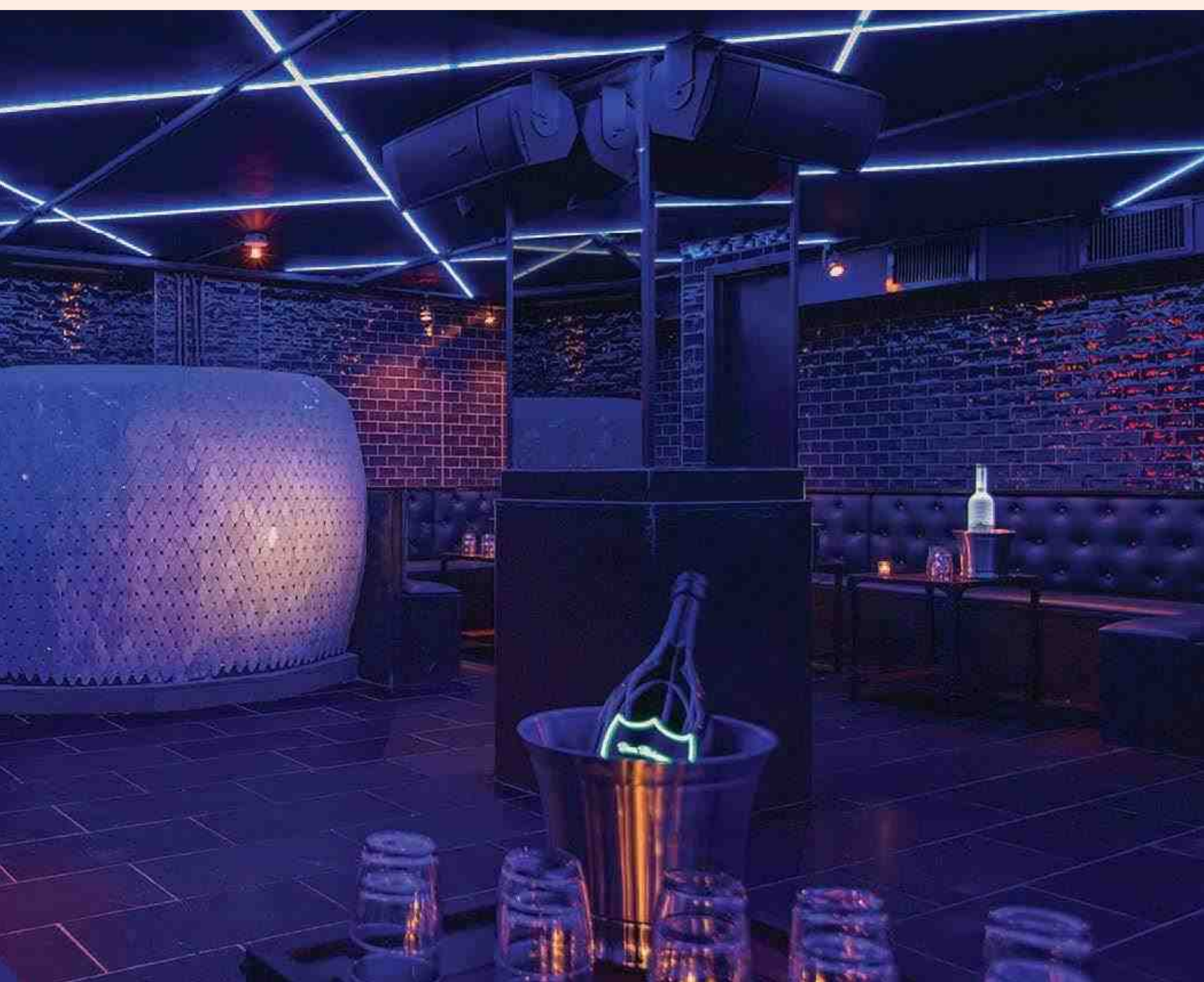
FULL BAR

DJ BOOTH



THE  
BONBONNIERE

BELOW HOTEL CHANTELLE





THE  
BONBONNIÈRE

BELOW HOTEL CHANTELLE



NAMED AFTER THE FRENCH WORD FOR A SMALL CANDY  
JAR, BONBONNIÈRE IS INSPIRED BY FABERGÉ EGGS AND  
EUROPEAN OPULENCE. THE DJ BOOTH IS CRAFTED IN THE STYLE OF  
AN ACTUAL FABERGÉ EGG, LED LIGHTS STREAK ACROSS  
THE CEILING, AND THE WALLS ARE MIRRORED.

**FEATURES**

1500 SQUARE FEET

FULL BAR

DJ BOOTH

STATE OF THE ART LED LIGHTING





# FOOD & DRINK PACKAGES





# OPEN BAR

---

2 HOUR MINIMUM

BEER & WINE OPTION AVAILABLE\*

## BEER WINE AND HOUSE SPIRITS

INCLUDES ALL BEERS, HOUSE WINE, CHAMPAGNE, HOUSE SPIRITS,  
BOTTLED WATER, & SOFT DRINKS

**\$60 PERSON FOR TWO-HOURS**  
**\$25 PERSON EACH ADDITIONAL HOUR**

SELECT STANDARD OPTION AVAILABLE\*

## STANDARD SPIRITS

INCLUDES ALL BEERS, UPGRADED WINES, CHAMPAGNE, MID-LEVEL  
BRANDS, BOTTLED WATER & SOFT DRINKS

**\$70 PERSON FOR TWO-HOURS**  
**\$30 PERSON EACH ADDITIONAL HOUR**

SELECT PREMIUM OPTION AVAILABLE\*

## PREMIUM SPIRITS

INCLUDES ALL BEERS, UPGRADED WINES, PREMIUM BRANDS, BOTTLED  
WATER, RED BULL & SOFT DRINKS

**\$80 PERSON FOR TWO-HOURS**  
**\$35 PERSON EACH ADDITIONAL HOUR**

- >ALL PACKAGES REQUIRE A TWO-HOUR MINIMUM AND AT LEAST THIRTY PARTICIPANTS
- >SHOTS & DOUBLES ARE NOT INCLUDED IN ANY PACKAGE
- >HOUSE OR CUSTOM SPECIALTY COCKTAILS MAY BE ADDED TO ANY PACKAGE FOR AN ADDITIONAL COST
- >PLEASE INQUIRE WITH YOUR SALES MANAGER FOR PRICING



# PACKAGES

## APPETIZER PLATTERS

**\$75 PER PLATTER**  
FEEDS 4-6 PEOPLE

**\$120 PER PLATTER**  
FEEDS 7-10 PEOPLE

BUFFALO CAULIFLOWER  
TRUFFLE TATOR TOTS  
POMME FRITES  
VEGETABLE SPRING ROLLS  
MAC & CHEESE DU JOUR  
GRILLED CHEESE BITES  
TRUFFLE PIZZA  
CHICKEN SATAY  
CHICKEN MEATBALLS  
MINI BEEF SLIDERS  
ROCK SHRIMP TEMPURA

*FOR GROUPS OF 30 OR MORE,  
AN APPETIZER STATION SET  
UP APPLIES*

## PASSED APPETIZERS

**\$20 PER PERSON - PER HOUR**  
CHOICE OF 6

TOMATO/WATERMELON SKEWER  
GRILLED CHEESE BITES  
VEGETABLE SPRING ROLL  
CAPRESE SKEWER  
TOMATO BRUSHETTA  
RISOTTO BALLS  
TRUFFLE GRILLED CHEESE  
DEVEILED EGGS  
FRIED PICKLES  
MAC N' CHEESE BALLS  
TRUFFLE PIZZA  
WARM GOAT CHEESE QUESADILLA  
*WITH ROASTED POBLANO & CORN SALSA*  
CHICKEN SATAY  
MINI CHICKEN & WAFFLES  
MAPLE GLAZED HOMEMADE MEATBALLS  
MINI BEEF SLIDERS  
MINI MEATBALL SLIDERS  
FRENCH DIP DUMPLINGS  
PIGS IN A BLANKET  
ROCK SHRIMP TEMPURA  
NOVA SCOTIA CRÈME FRAÎCHE  
SPICY TUNA TARTARE *ON CUCUMBER ROUNDS*  
MINI FISH TACOS  
*+ADD \$3 PER PERSON*  
MANGO SHRIMP SKEWER  
*+ADD \$3 PER PERSON*



# STATIONS

\$25 PER PERSON

## TAQUERIA

CHEF ATTENDED

### CHOOSE 2

CHIPOTLE CHICKEN BREAST

GROUND BEEF

MAHI MAHI GRILLED FISH

PULLED PORK

GRILLED VEGETABLES

CHEESE QUESADILLAS

BEEF EMPANADAS

CHICKEN EMPANADAS

INCLUDES:

SOFT SHELLS, HARD SHELLS, RICE, BEANS, CHEESE, SOUR CREAM, SALSA VERDE, PICO DE GALLO, GUACAMOLE, SAUTEED PEPPERS & ONIONS, LIME, CILANTRO, MEXICAN STREET CORN SALAD

## COMFORT

### CHOOSE 2

CHOICE OF MAC 'N CHEESE  
TRUFFLE OR CHEDDAR

FRIED CHICKEN & WAFFLES  
WHITE GRAVY

BRAISED SHORT RIBS

BUILD YOUR OWN CHILI  
BEEF, TURKEY OR VEGETARIAN  
WITH SHREDDED CHEESE, SOUR CREAM,  
JALAPEÑO

## NEW YORK, NEW YORK

CLASSIC BEEF SLIDERS

FRANKS IN A BLANKET

PASTRAMI SLIDERS

PULLED PORK SLIDERS

PICKLE SELECTION

OVERSIZED SALTED PRETZELS

MINI KNISHES

ONION RINGS

## EAST COAST DELI

### CHOOSE 2

MINI SANDWICHES OF CORN BEEF ON RYE

PASTRAMI ON PUMPERNICKEL

BEEF TONGUE ON RYE

POTATO LATKES - APPLESAUCE & SOUR CREAM

INCLUDES:

SOUR PICKLED GREEN TOMATOES,  
ASSORTED PICKLES, COLESLAW, MACARONI SALAD

## SANTORINI

VEGETARIAN

FETA TIROKAFTERI DIP

HUMMUS

MINT TZATZIKI

TOMATO-EGGPLANT DIP

PITA BREAD

DOLMA

SPANAKOPITA

GREEK SALAD



# STATIONS

---

CONTINUED...

## TUSCAN PASTA

**CHOOSE 2 PASTAS AND 2 SAUCES**

*SELECT YOUR FAVORITE SHAPE PASTA, ALONG WITH YOUR FAVORITE SAUCE, OUR CHEFS WILL MAN THIS CLASSIC STATION FAVORITE COMPLETING YOUR GUESTS DISH WITH THEIR FAVORITE ADDITIONS TABLESIDE*

### **PASTAS**

PENNE  
RIGATONI  
FETTUCCINE  
SPAGHETTI  
CHEESE RAVIOLI  
BUCATINI  
FUSILLI  
ORECCHIETTE

### **ADD-INS**

SUNDRIED TOMATOES  
BROCCOLI  
BABY GRAPE TOMATOES  
PEAS  
SHAVED PARMESAN  
SPICY SAUSAGE FRESH BASIL  
GARLIC

### **SAUCES**

BOLOGNESE  
MARINARA  
ALA VODKA  
ALFREDO  
PESTO  
ROASTED GARLIC & OIL  
PRIMAVERA



# SHAREABLE DINING

\$29 PER PERSON / FOUR OR MORE

## SOCIAL STYLE

### **CHAI RICOTTA**

*WHIPPED SHEEP'S MILK RICCOTA, MASALA CHAI,  
BRIOCHE, CHILI JAM*

### **VEGAN CEVICHE**

*HEARTS OF PALM, BELL PEPPERS, RED ONION,  
CILANTRO, CITRUS, GREEN PLANTAIN CHIPS*

### **CHICKEN AND WAFFLES**

*WAFFLES CRUSTED CHICKEN, MAPLE COTTON CANDY*

### **TRUFFLE PIZZA**

*ROASTED MUSHROOMS, GOAT CHEESE, PARMESAN, SHAVED  
BLACK TRUFFLE*

### **BEEF SLIDERS**

*PAT LA FRIEDA AGED GROUND BEEF, CHEDDAR CHEESE,  
HOUSE MADE PICKLES, BURGER SAUCE*

### **STUFFED FRENCH TOAST**

*CORNFLAKE CRUSTED BRIOCHE, CINNAMON  
MASCARPONE CENTER*

### **TUNA TARTARE CIGARS**

*AHI TUNA, SOY, SESAME, GREEN ONIONS, CRISP WONTON  
CIGAR SHELL, MISO GINGER DIPPING SAUCE*

## CELEBRATE

ALL DAY COCKTAIL & BOTTLE PACKAGES

### **RUBY**

**\$30 PER PERSON**

*2 FREE FLOWING HOURS OF  
SPECIALTY COCKTAIL PITCHERS:*

#### **CHOICE OF...**

PINEAPPLE EXPRESS  
PASSION FRUIT MOJITO  
SOUTHERN SANGRIA  
MIMOSA

### **AMETHYST**

**\$45 PER PERSON**

*2 FREE FLOWING HOURS OF:*

CHANDON BRUT SPARKLING  
DARK HORSE ROSE - CALIFORNIA  
BISTRO SAUV BLANC - FRANCE



# SWEET ENDINGS

---

\$12 PER PERSON

## DESSERT PARADE

**CHOOSE 4**

MINI ROOT BEER FLOAT

MINI RED VELVET CUP CAKES

MINI MOLTEN CHOCOLATE CAKES

MINI MAPLE DONUT HOLES

SORBET CONES

FRENCH TOAST KABOB

SALTED CARAMEL

MILK SHOTS

MINI ICE CREAM COOKIE SANDWICHES

CHEESECAKE LOLLIPOPS

FRENCH TOAST KABOB

SALTED CARAMEL

MILK SHOTS

MINI ICE CREAM COOKIE

SANDWICHES

CHEESECAKE LOLLIPOPS



# CONTACT

92  
LUDLOW STREET



PH  
212-254-9100

[EVENTS@HOTELCHANTELLENYC.COM](mailto:EVENTS@HOTELCHANTELLENYC.COM)

