



events and retreats
FRASER RIVER LODGE
RESORT LOCATED IN THE FRASER VALLEY

TABLE OF CONTENTS

WELCOME	3
MEETING SPACES	4
EVENTS HALL	5
CONFERENCE ROOM	6
ADDITIONAL SPACES	7
ACCOMMODATIONS	9
TEAM BUILDING ACTIVITIES	11
THE MENUS	14
PAST CLIENT REVIEWS	15
BOOKING INFORMATION	16

03. WELCOME

WELCOME TO THE FRASER RIVER LODGE. A WORLD-CLASS DESTINATION FOR CORPORATE AND GROUP BOOKINGS IN THE HEART OF THE FRASER VALLEY, ON THE CULTURALLY RICH TRADITIONAL TERRITORIES OF THE STO: LO FIRST NATIONS COMMUNITIES. NESTLED AMIDST THE STUNNING MOUNTAINS AND PICTURESQUE SCENERY, OUR LODGE OFFERS A SERENE ESCAPE JUST AN HOUR FROM THE HEART OF VANCOUVER. WITH LUXURIOUS AMENITIES AND EXCEPTIONAL SERVICE, WE PROVIDE THE PERFECT SETTING FOR YOUR NEXT CORPORATE RETREAT, TEAM BUILDING EVENT OR LARGE GROUP BOOKING.

OUR EXPERIENCED TEAM WILL WORK WITH YOU TO CREATE A CUSTOMIZED ITINERARY TO MEET YOUR SPECIFIC NEEDS AND ENSURE THAT YOUR EVENT IS A SUCCESS. FROM OUR GOURMET DINING TO OUR BREATHTAKING VIEWS, WE INVITE YOU TO EXPERIENCE THE ULTIMATE IN CORPORATE HOSPITALITY AT THE FRASER RIVER LODGE.

[VIEW LODGE TOUR](#)

[VIEW PROPERTY MAP](#)

200

GROUP CAPACITY

36

BEDS

10+

ACTIVITIES





EVENT SPACES

EVENTS HALL

CAPACITY: 200

ROOM MEASUREMENTS: 68 X 30 FT

RENTAL PRICE: \$1200 | 8 HOURS

*TAX IS NOT INCLUDED IN THE RENTAL PRICES

**ADDITIONAL TIME MAY BE SUBJECT TO A FEE

MEETING PACKAGE INCLUDES:

- TABLES, CHAIRS AND LINENS
- AUDIO VISUAL PACKAGE
- PROJECTOR & RETRACTABLE SCREEN
- HDMI, VGA, AUDIO CABLES, A/V ADAPTERS
- INTERNAL SPEAKER AND SOUND SYSTEM
- BOSE SPEAKER
- MICROPHONE AND PODIUM
- HIGH-SPEED WIFI
- FLIP CHARTS AND WHITEBOARD
- COMPLIMENTARY ONSITE PARKING

VIEW VIDEO
TOUR

VIEW 360°
VIDEO

VIEW
FLOORPLAN



CONFERENCE ROOM

CAPACITY: 30

ROOM MEASUREMENTS: 23 X 26 FT

RENTAL PRICE: \$500 | 8 HOURS

*TAX IS NOT INCLUDED IN THE RENTAL PRICES

**ADDITIONAL TIME MAY BE SUBJECT TO A FEE

MEETING PACKAGE INCLUDES:

- TABLES, CHAIRS AND LINENS
- AUDIO VISUAL PACKAGE
- PROJECTOR & RETRACTABLE SCREEN
- HDMI, VGA, AUDIO CABLES, A/V ADAPTERS
- INTERNAL SPEAKER AND SOUND SYSTEM
- BOSE SPEAKER
- MICROPHONE AND PODIUM
- HIGH-SPEED WIFI
- FLIP CHARTS AND WHITEBOARD
- COMPLIMENTARY ONSITE PARKING

VIEW VIDEO
TOUR

VIEW 360°
VIDEO

VIEW
FLOORPLAN



07. LODGE SPACES

WITH MULTIPLE BREAKOUT AREAS AVAILABLE, THE LODGE SPACES OFFER VERSATILITY FOR YOUR EVENT NEEDS. EACH UNIQUE SPACE OFFERS A COMFORTABLE SETTING, WITH STUNNING BACKDROPS OF THE FRASER VALLEY. TRANSFORM YOUR EVENT INTO AN UNFORGETTABLE EXPERIENCE WITH THESE FLEXIBLE OPTIONS.



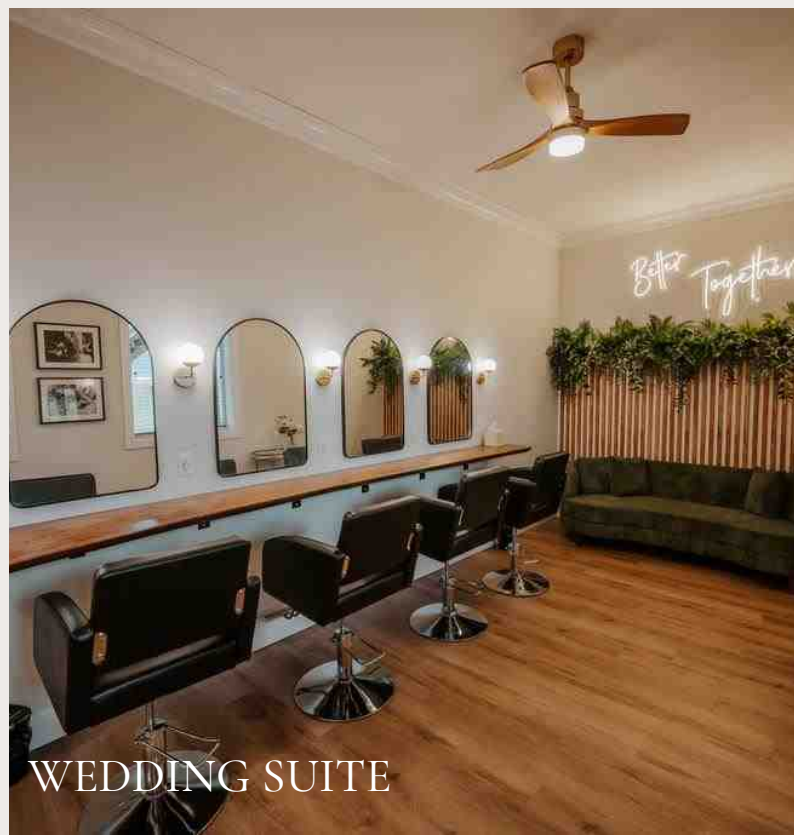
GAMES ROOM



THE LOUNGE



MARQUEE TENT



WEDDING SUITE



ACC
OMM
ODAT
IONS

ROOMS & SUITES

LUXURY LODGING ON 18 PRIVATE ACRES. OUR PROPERTY OFFERS FULL VIEWS OF THE CASCADE MOUNTAIN RANGE, AND THE FRASER RIVER. THE ACCOMMODATIONS RANGE FROM SINGLE ROOMS, TO MULTI ROOM UNITS, OFFERING 18 TOTAL ACCOMMODATIONS. RECONNECT WITH NATURE, AND ENJOY THE SERENITY OF WILDERNESS, WITH ALL MODERN AMENITIES AT YOUR FINGERTIPS.

18
ROOMS

18
SINGLE OCCUPANCY

36
DOUBLE OCCUPANCY



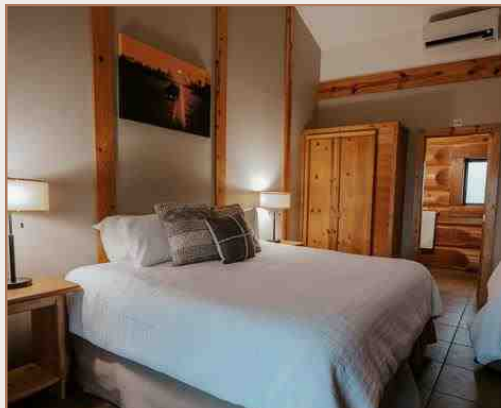
BISON HOT TUB SUITES
SLEEPS 2 | \$399 - \$479 PER NIGHT



THE OUTPOST
SLEEPS 8 | \$800 - 850 PER NIGHT



HOMESTEAD CHALET
SLEEPS 4 | \$650 - 700 PER NIGHT



DELUXE ROOMS
SLEEPS 3 | \$275 - \$325 PER NIGHT



EXECUTIVE ROOMS
SLEEPS 2 | \$300 - \$350 PER NIGHT

A photograph of two women wading in a river. They are wearing brown outdoor jackets and caps. The woman on the left is wearing a grey and black cap, and the woman on the right is wearing a black cap. They are both looking towards the right. The background shows a forested riverbank and snow-capped mountains under a cloudy sky. The text 'TEAM BUILDING' is overlaid in large white letters.

TEAM

BUILD

ING

11. TEAM BUILDING



STURGEON FISHING



PONTOON & THRILL RIDES



AXE THROWING



YARD GAMES



TRAP SHOOTING



SLINGSHOTS

12. TEAM BUILDING



YOGA



FARM CLASSES



CAMPFIRE & S'MORES



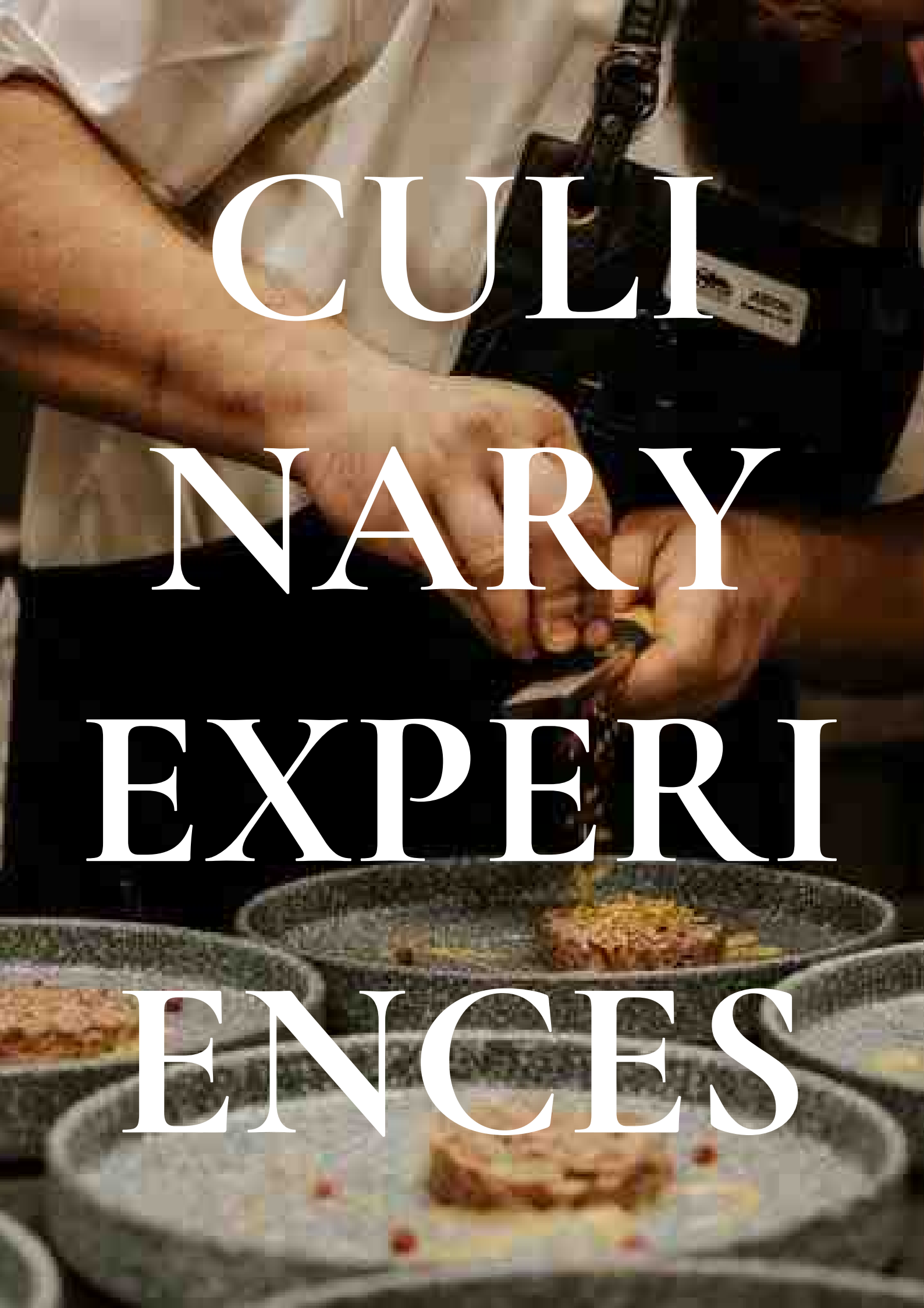
GOLF



CANOE JOURNEY



CULTURAL EXPERIENCES



CULINARY
EXPERIENCES

THE MENU

WELCOME TO OUR EXCLUSIVE MENU SELECTION TAILORED TO ELEVATE YOUR DINING EXPERIENCE. PLEASE CHOOSE FROM OUR THOUGHTFULLY CURATED BREAKFAST, LUNCH, AND DINNER OPTIONS BY CLICKING ON THE TITLES TO UNVEIL THE EXQUISITE OFFERINGS.

PLEASE NOTE THAT THE PRICES LISTED DO NOT INCLUDE TAXES AND SERVICE CHARGES.

BREAKFAST:

- BREAKFAST BUFFET MENU | \$40
- CONTINENTAL BREAKFAST MENU | \$25
- DELUXE BRUNCH BUFFET | \$65
- COFFEE & SNACK BREAK | \$20

DINNER & BBQ:

- HEMLOCK BUFFET | \$80
- FRASER RIVER BUFFET | \$110
- PITMASTER BUFFET | \$110
- KENT VALLEY BBQ | \$85
- HARRISON BEACH BBQ | \$50
- PORT DOUGLAS BUFFET | \$75
- MOUNT WOODSIDE - FAMILY STYLE | \$75
- CHEF'S TABLE DINNER | \$110

LUNCH:

- WORKING LUNCH BUFFET | \$45
- GREEK LUNCH BUFFET | \$65
- PORT DOUGLAS BUFFET | \$55

OTHER:

- ELEGANT BEGINNINGS & HORS D'OEUVRES
- FRASER RIVER BUFFET ENHANCEMENTS
- BAR MENU
- OUR BUBBLES





CLIENT REVIEWS

“THE GROUP HAD THE TIME OF THEIR LIVES. YOUR TEAM WAS SO ORGANIZED AND DETAILED, AND I APPRECIATE THOSE QUALITIES SO MUCH. I NEVER USUALLY GET TO FULLY ENJOY THOSE DAYS BECAUSE I’M RUNNING AROUND, BUT I TRULY GOT THE FULL EXPERIENCE THANKS TO YOUR TEAM. THE GUIDES WERE FANTASTIC AND KNOWLEDGEABLE. THE CATERING WAS AMAZING. EVERY STAFF MEMBER WAS SO PERSONABLE AND HARD WORKING. OUR EXPERIENCE WAS 10/10, AND I WILL SPREAD THE WORD TO ANY TEAM LOOKING TO TEAM BUILD.”

KAITE DOYLE - EDMONTON OILERS | DIRECTOR, HOCKEY OPERATIONS & TEAM SERVICES

“MY COMPANY AND I JUST HOSTED A STURGEON FISHING DAY ON 6 BOATS WITH 6 STAFF MEMBERS AND 18 CLIENTS, WHAT A GREAT DAY! EVERY PERSON WE DEALT WITH THAT DAY WAS SO HELPFUL AND FRIENDLY, YOU CAN TELL THE CULTURE AMONG THE STAFF IS VERY GOOD. THE FOOD WAS VERY GOOD, ESPECIALLY THE SMOKE ROAST BEEF THAT WAS SERVED. WE ARE ALREADY TALKING ABOUT BOOKING FOR NEXT YEAR.”

MARK BRANDOW - CENTRA WINDOWS | VICE PRESIDENT OF SALES

TERMS AND CONDITIONS

A 50% DEPOSIT IS REQUIRED TO CONFIRM YOUR BOOKING. FINAL PAYMENT IS DUE 60 DAYS BEFORE BOOKING AND WILL BE CHARGED TO THE CARD ON FILE UNLESS NOTIFIED IN WRITING OF ANOTHER FORM OF PAYMENT BEFORE THE DATE.

CANCELLATION POLICY

ALL CANCELLATIONS MUST BE DONE IN WRITING. PRIVATE CANCELLATION INSURANCE IS RECOMMENDED.

CANCELLATIONS WILL BE REFUNDED UP TO 90% OF THE BOOKING VALUE IF THE DATE IS BOOKED BY THE LODGE OR YOURSELF, WITH A SIMILAR VALUE OF BOOKING. CANCELLATIONS 60 DAYS BEFORE THE EVENT WILL BE OFFERED TO TRANSFER THEIR BALANCE TO AN ALTERNATIVE DATE - A REBOOKING FEE WILL APPLY.

FOOD AND BEVERAGE

NO PRIVATE ALCOHOL IS ALLOWED IN THE MAIN LODGE AREA AND EVENT SPACES. ALL ALCOHOLIC BEVERAGES CONSUMED IN LICENSED AREAS MUST BE PURCHASED THROUGH THE LODGE. ALL FOOD SERVED MUST BE PROVIDED BY THE LODGE. LIMITED DIETARY SUBSTITUTIONS MAY BE MADE AVAILABLE UPON PRIOR REQUESTS, ADDITIONAL CHARGES MAY APPLY. MEAL SERVICES STARTING 30 MINUTES BEYOND AGREED UPON SERVICE TIME WILL BE SUBJECT TO A LABOUR CHARGE. THE LODGE WILL NOT BE HELD RESPONSIBLE FOR THE COMPROMISED QUALITY OF FOOD AS A RESULT OF THE 'CLIENTS' DELAY IN SCHEDULE. FINAL HEADCOUNT AND DIETARY RESTRICTIONS ARE DUE 21 DAYS BEFORE THE EVENT. IF LAST-MINUTE ACCOMMODATIONS CAN BE MADE, THEY WILL BE SUBJECT TO A LABOUR SURCHARGE OF UP TO 25%.

PARKING

COMPLIMENTARY ONSITE PARKING IS OFFERED. THE LODGE WILL NOT BE HELD RESPONSIBLE FOR ANY DAMAGE OR LOST ITEMS WHILE PARKING ON-SITE.

CHECK-IN AND CHECK-OUT TIMES

FAILURE TO CHECK OUT AT THE TIMES LISTED IN THE BROCHURE WILL INCUR A FEE.

LODGE INFO

- ALL EMERGENCY EXITS ARE LABELLED.
- FIRE EXTINGUISHER LOCATIONS ARE IDENTIFIED BY A MAP ON THE WALL IN EACH ROOM.
- HOT TUB SAFETY RULES ARE POSTED BY THE HOT TUB, PLEASE READ BEFORE ENTERING.
- SMOKING IS ALLOWED IN DESIGNATED AREAS.
- AN AED IS ONSITE AT ALL TIMES.