



Midtown East  
515 Madison Avenue  
10th Floor  
New York, NY 10022



### JAY CONFERENCE AT MIDTOWN EAST

Jay Conference was born out of an increasing demand for larger meeting space. Traditional meeting spaces are a hassle to reserve, provide little to no administrative service and the presentation technology (much like the decor) is outdated. Jay Conference is a step above traditional meeting spaces. An elegant 22,000 square foot soundproof conference center featuring the latest in presentation technology, professional meeting planners, and gourmet catering packages make Jay Conference the best choice of venue to host your meeting.



#### Included Amenities



Advanced Presentation Technology



High-speed WiFi



Flexible event and meeting space



Top-level catering on-site



Unlimited access to the recharge area

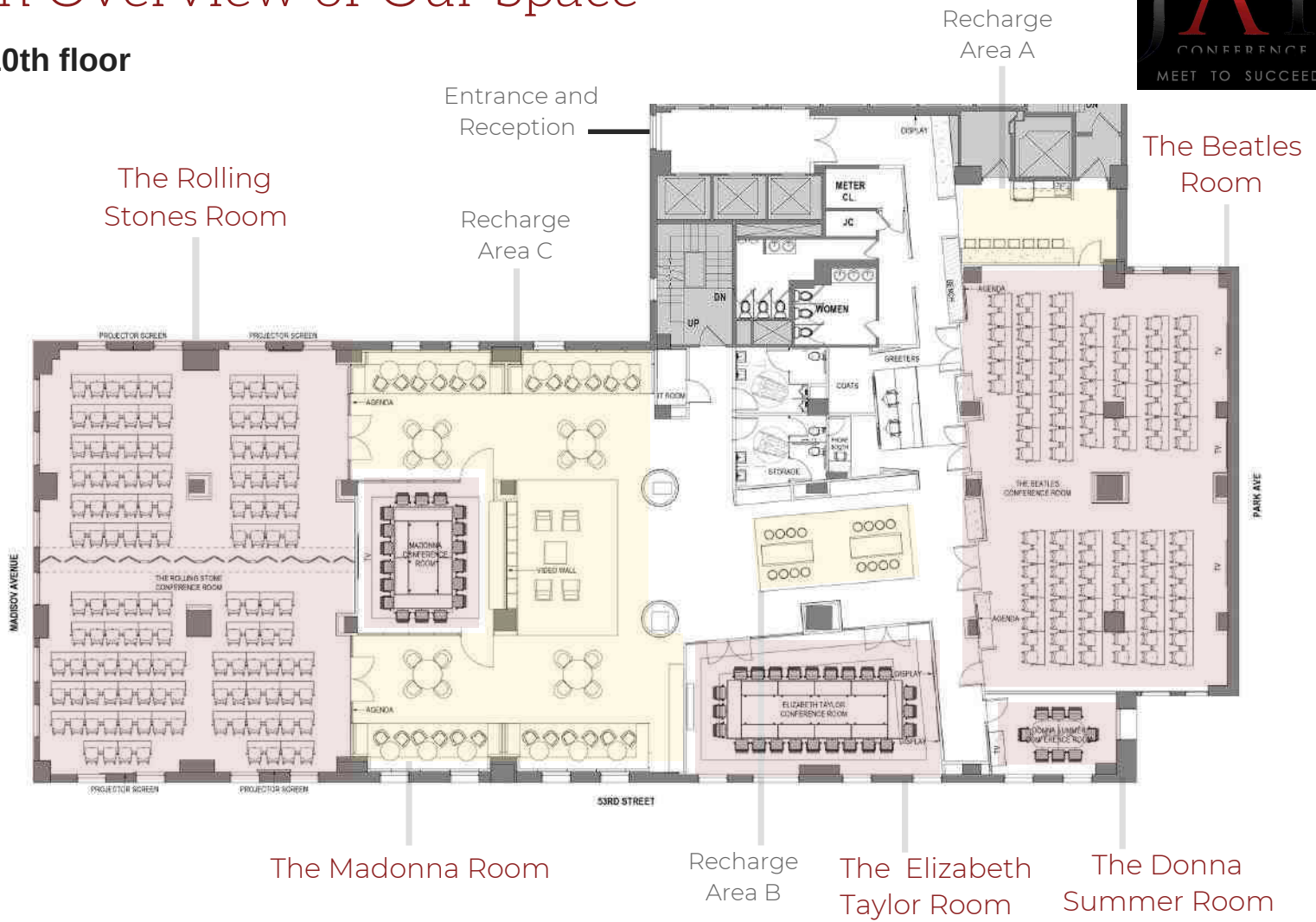


Event planning services

# An Overview of Our Space



## 10th floor



Meeting Room	Dimension (ft)	Area (sq ft)	Ceiling Height (ft)	Theater	Classroom	Pod	Boardroom	Reception
Rolling Stones	58 x 43	2,600	11'	220	156	144	n/a	250
Beatles	57 x 36	2,150	11'	170	110	114	n/a	200
Elizabeth Taylor	35 x 21	750	11'	60	30	36	30	75
Madonna	21 x 21	450	11'	40	18	24	18	45
Donna Summer	17 x 11	200	11'	16	n/a	10	12	20
Recharge A	14 x 11	155	11'	n/a	n/a	n/a	n/a	15
Recharge B	25 x 20	500	11'	n/a	n/a	n/a	n/a	50
Recharge C	80 x 20	1,600	11'	n/a	n/a	n/a	n/a	160



# An Overview of Our Space



Theater



Boardroom



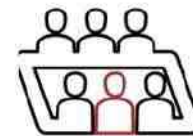
Classroom



Reception



Pods / Rounds



Our on-demand meeting rooms can easily be rearranged to accommodate the need for theater, boardroom, classroom, reception, or pods/rounds style setups and always include onsite professional administrative and IT support. Our 5 fully adjustable conference rooms were designed to embody the classic style of their namesake.



## The Rolling Stones Room

We've got moves like Jagger! At 2,600 square feet, our Rolling Stones room is the largest conference space our Midtown East location has to offer and includes 4 screen projectors, ideal for all types of large-scale presentations. The room can easily accommodate up to 250 guests reception-style or up to 220 theater-style.



## The Beatles Room

Highly regarded as one of the most influential bands of all time, the Beatles are the epitome of rock n' roll. Our Beatles room is the second largest meeting space at Midtown East with over 2,000 square feet and maxing out at 200 attendees. The room is adjacent to our Recharge Area, specifically designed to increase focus and productivity. Take a walk down Abbey Road at Jay Conference!



## The Elizabeth Taylor Room

Elizabeth Taylor's iconic beauty and glamour transformed classic Hollywood cinema. She is known for her charm and elegance, much like our space. At 750 square feet, the Elizabeth Taylor room is located directly behind the reception desk and in close proximity to our phone booths for private calls.

# An Overview of Our Space



Theater



Boardroom



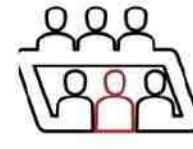
Classroom



Reception



Pods / Rounds



Our on-demand meeting rooms can easily be rearranged to accommodate the need for theater, boardroom, classroom, reception, or pods/rounds style setups and always include onsite professional administrative and IT support. Our 5 fully adjustable conference rooms were designed to embody the classic style and elegance of their namesake.



## The Madonna Room

Commonly referred to as the “Queen of Pop,” Madonna’s music and style redefined a generation. Located just in front of our Rolling Stones room, our Madonna conference space is 450 square feet and can entertain up to 45 guests. So come on, vogue!



## The Donna Summer Room

Renowned as the “Queen of Disco,” Donna Summer represents one of the world’s best selling artists of all time. *She works hard for her money!* The Summer meeting space is the smallest at this location, 200 square feet, and can accommodate 10-20 guests depending on the setup style.

# The Experience

with that extra touch

## Technology

All of our conference spaces feature the latest in Crestron presentation technology and come fully-equipped with large screen TVs, projectors, conference calling capability, and unlimited high-speed wifi. The modular tables with built-in ports for charging, USB, and HDMI inputs can easily be rearranged according to your needs. Our onsite audio and visual technical support staff guarantee a successful conference every time.



## Event Planning Support

You're here to make some big moves for your business, so leave the planning to us. Our team of meeting organizers and event planners are highly trained and specialize in providing unparalleled support for high performance corporate meetings and gatherings. Jay Conference is known for our unbeatable standards of customer service with increasing efforts to exceed expectations for every event.



## Catering

Jay Conference has an exclusive catering partnership with Cafe Metro, offering the finest selections of breakfast, lunch and refreshment packages. Give your team a meeting experience they will never forget by serving 5-star cuisine conveniently available to order directly on our website.



## Customer Support

In addition to planning all logistics of your meeting, our professional staff anticipate the needs of your team and assist with any onsite requests. We offer several business and reception services including, but not limited to, reception greeting, coat check, courier arrangements, as well as copying, scanning, and faxing on-demand.





# Directions to Jay Conference

## Closest Metro Stations



The E & M trains stop at 5th Avenue and 53rd Street and the No. 6 train stops at 51st and Lexington. The entrance to our building is on 53rd Street between Park and Madison Avenue.

## Bus Stations

Buses continually run north on Madison Avenue and south on Fifth Avenue, stopping on the corner of 53rd Street. The 57th Street cross-town bus stops on the corner of 57th & Madison.

M1, M3, M4, M102, M103,  
BxM4 & Q32





# Meeting & Event

## MENU

### BRONZE

Recharge Cafe with unlimited refreshments & snacks

### SILVER

Recharge Cafe with unlimited refreshments & snacks  
Continental Breakfast  
Lunch

- 1 Seasonal Salad
- 1 Protein Salad
- 2 Sandwiches
- Assorted Dessert

### GOLD

Recharge Cafe with unlimited refreshments & snacks  
Executive Breakfast with hot items  
Lunch

- 2 Seasonal Salads
- 1 Protein Salad
- 1 Sandwich
- 1 Hot Entree
- Assorted Dessert

### PLATINUM

Recharge Cafe with unlimited refreshments & snacks  
VIP Breakfast with hot items  
Lunch

- 2 Seasonal Salads
- 1 Protein Salad
- 2 Hot Entrees
- 2 Hot Sides
- Selection of Signature Desserts





### Fifth Avenue

15 W 38th Street  
1st and 2nd Floors  
New York, NY 10018

### Midtown East

515 Madison  
10th Floor  
New York, NY  
10022

### Brooklyn

8501 New Utrecht Avenue  
Brooklyn, NY 11214

### Bryant Park

109 W 39th Street  
2nd Floor and Concourse Level  
New York, NY 10018

### Chelsea

159 West 25th St.  
2nd and 3rd Floor  
New York, NY 10001



### Grand Central

369 Lexington Avenue  
2nd & 3rd Floors  
New York, NY 10017

### Financial District

30 Broad Street  
14th Floor  
New York, NY 10004

### Times Square

10 Times Square  
3rd, 5th, & 6th Floors  
New York, NY 10018

### 34th Street

31 west 34th Street  
7th & 8th Floor  
New York, NY 10001

### Madison Avenue

315 Madison Avenue  
3rd & 4th Floors  
New York, NY 10017

### Fifth Avenue

15 W 38th Street  
Ground & 4th to 12th Floors  
New York, NY 10018

### Midtown East

515 Madison  
8th & 9th Floors  
New York, NY 10022

### Wall Street

40 Wall Street  
27th, 28th, & 29th Floors  
New York, NY 10004

### Chelsea

159 West 25th St.  
4th, 5th, 7th and 8th Floors  
New York, NY 10001