



# Welcome Packet



# The Venue



**Sawyer's Landing is more than just a venue; it's a story of preservation, transformation, and celebration.**

Celebrate your wedding day surrounded by charm and history at Sawyer's Landing, a lovely venue in southeastern Missouri. Once the Mark Twain National Forest Ranger Station dating back to 1933, our historic site has become a cozy space for your special day.

Our coffee shop and bistro, now in the former ranger station, provide a relaxed setting for pre-wedding gatherings. The renovated post and beam shop, turned into a simple yet elegant wedding venue, is surrounded by native Missouri trees.

At Sawyer's Landing, we offer more than a venue; it's a historic and romantic setting for your love story. Welcome to a place where your memories become part of our story.

# Foyer/Bar Area



Upon entering the venue, you'll be welcomed by a spacious foyer and an inviting bar area. The raw-edged wood counter serves perfectly for your guest book and gift table. Add a personal touch by showcasing a slideshow or engagement photos on the TV – a simple yet charming way to make your event uniquely yours.

Enjoy the convenience of our bar equipped with a cooler, ice maker, and generous under-counter storage for your drinks. Easily transition into the main room through the sliding barn doors for a hassle-free experience.





# The Main Event Room

Beyond the bar lies our Main Event Room, where up to 260 guests can share in the warmth of natural light filtering through modern glass doors. Perfect for your ceremonies and receptions, making every moment of your special day truly memorable.



# The Patio



Say 'I do' or celebrate under the open sky on our beautiful patio. Our versatile space is perfect for both your ceremony and reception, creating a lovely setting for your special day.



# Bridal Suite



Experience sheer elegance in our beautiful bridal suite, a space that will truly take your breath away. Featuring a large sectional sofa, individual mirrors, and stools to comfortably host your entire bridal party, as well as a gorgeous mirror and styling chair exclusively for the bride.

The abundance of natural light streaming through adds a touch of radiance, creating the perfect setting for capturing beautiful pre-wedding moments in photos. It's a haven of comfort and glamour for your unforgettable day.

# Grooms Suite



Our Grooms suite features a large sectional, TV, private bathroom, and game table. It's the perfect space for the groom and groomsmen to relax and make memories before the ceremony

# Wedding Packages

## SIMPLE

1 DAY WEEKEND RENTAL

\$3,000

- 1 DAY WEEKEND RENTAL
  - Tables
  - White Chairs
  - Groom Suites
  - Bridal Suite
  - Outdoor Patio
  - Tower Speaker
    - Fire Pits
  - Commercial Kitchen

## CLASSIC

2 DAY WEEKEND RENTAL

\$4,500

- 2 DAY RENTAL (Saturday & 4 hours on Friday)
- Enjoy all the perks of our simple package, plus:
- Day of Wedding Coordinator

## LUXE

3 DAY WEEKEND RENTAL

\$6,000

- 3 DAY RENTAL (Friday 8am - Sunday 12pm)
- Enjoy all the perks of our simple package, plus:
- Day of Wedding Coordinator
  - Arbor of your choice
  - 4 Hour Event Space for Bridal Shower or Rehearsal Dinner

**Bridal parties will receive a 10% discount with delivery from The Station.**

**OFF-SEASON WEDDINGS (NOV-MAR) WILL RECEIVE DISCOUNTED RATES.**

All rentals include your choice of round or rectangle tables.

We will have the tables and chairs on dollies in the building when you arrive to set up. If you would like our team to place and set up the tables and chairs it will be an additional \$200.00.



---

# FAQ's

---

## **DO I NEED AN APPOINTMENT FOR A TOUR?**

Yes. Please contact [thevenue@sawyerslanding.co](mailto:thevenue@sawyerslanding.co) or call 573.561.1158 ext. 2 to schedule tour.

## **HOW MANY PEOPLE CAN YOU ACCOMMODATE?**

The inside of The Venue can accommodate 200 guests comfortably. The outdoor patio (50' x 100') can accommodate 300 people comfortably. Together, using the building and the patio, The Venue can host up to 500 people.

## **WHAT TIME CAN WE ACCESS THE VENUE?**

The day of your rental you can get into the building at 8 am. If you chose the Luxe package you can access the building at 8 am Friday, Saturday, and Sunday. If you choose the Classic package the Event Coordinator will contact you to decide what time you need to begin the 4-hour rental on Friday. The Venue has a door handle with a key code at the back of the building. Before your rental, the Event Coordinator will give you an access code to unlock the door.

## **WHAT TIME DOES THE EVENT HAVE TO END?**

The event must end at 11:00PM and all guests and renters must be out of the building by 11:59PM.

## **DOES THE VENUE OFFER LINENS?**

Not at this time, we recommend Grand Rentals from Farmington, MO.

## **ARE WE REQUIRED TO USE A SPECIFIC CATERER?**

No, you can use whichever catering company you prefer. However, The Station offers catering services with several delicious options and would be honored to cater your event.

## **WHAT IS THE PROCESS FOR END OF NIGHT CLEAN UP?**

Please take out all of the trash (including bridal and groom suites) and put it in the dumpster. Remove all tablecloths and stack all chairs on tables. If there are tables and chairs outside, please stack them and place them inside the building.

## **WHAT DOES A DAY-OF COORDINATOR DO?**

Our wedding coordinator (WC) will reach out to you approx. three months before your wedding date to begin going over all the details. A final detail meeting will be set about a month before the wedding day to nail down all of the fine details including venue layout, timeline details, processional lineup, etc. Your WC will set a time with you for rehearsal and be here to walk you and your family/bridal party through the whole process. On the wedding day, your WC will ensure all is going as planned and then coordinate the ceremony and stay until the main activities of the reception are over. We are here to make your day run as smoothly as possible and help as much as we can.

## **IS THE VENUE ACCESSIBLE FOR THOSE WITH DISABILITIES?**

Yes. The building, patio, and bathrooms are wheelchair accessible.

---

# FAQ's

---

## **WHAT IS THE SMOKING/VAPING POLICY?**

Smoking and vaping are not allowed in any buildings. The only area guests are allowed to smoke is in our dedicated smoking area which is behind the building. This area is marked with signage and cigarette butt disposals.

## **WHAT IS THE ALCOHOL POLICY?**

We currently offer a BYOB policy and External Bar Service.

**BYOB**• This means that renters purchase all alcohol for the event and hire a bartender to serve the alcohol at an open bar. The bartender does not have to be certified by the state of Missouri. However, the bartender cannot participate in the event and will be responsible for serving alcohol responsibly and not serving to minors.

**External Bar Services**• If renters choose to hire an external bar service, the company must provide a copy of their valid alcohol license and must have appropriate liability insurance coverage, and provide proof of insurance to The Venue at Sawyers Landing

## **WHAT CAN WE USE TO HANG DECOR?**

**INDOOR**: Command strips, zip ties, and double-sided tape are allowed. Nails, staples, screws, and adhesives are not permitted.

**OUTDOOR**: Small nails, zip ties, and staples are permitted on the wood slats. Screws and adhesives are not permitted.

## **DO YOU ALLOW GLITTER/CONFETTI?**

No, we do not allow glitter or confetti. However, we do allow biodegradable materials to be used in place such as real flower petals or leaves and bird seed. If you have a question or suggestion about using another material please ask.

## **WHEN IS THE DEPOSIT DUE & IS IT REFUNDABLE?**

Deposit is due to book and reserve your date. Deposits made towards your total balance are non-refundable.

Blocking that date for you means we have been turning down others who wanted that date. If you decide to cancel we can't guarantee we can rebook the date.

## **DO YOU OFFER PAYMENT PLANS?**

Yes. Once you place the deposit and sign the contract to reserve your date, we will request 50% of the balance 6 months prior to your wedding date and then the remaining balance 3 months before your wedding date.

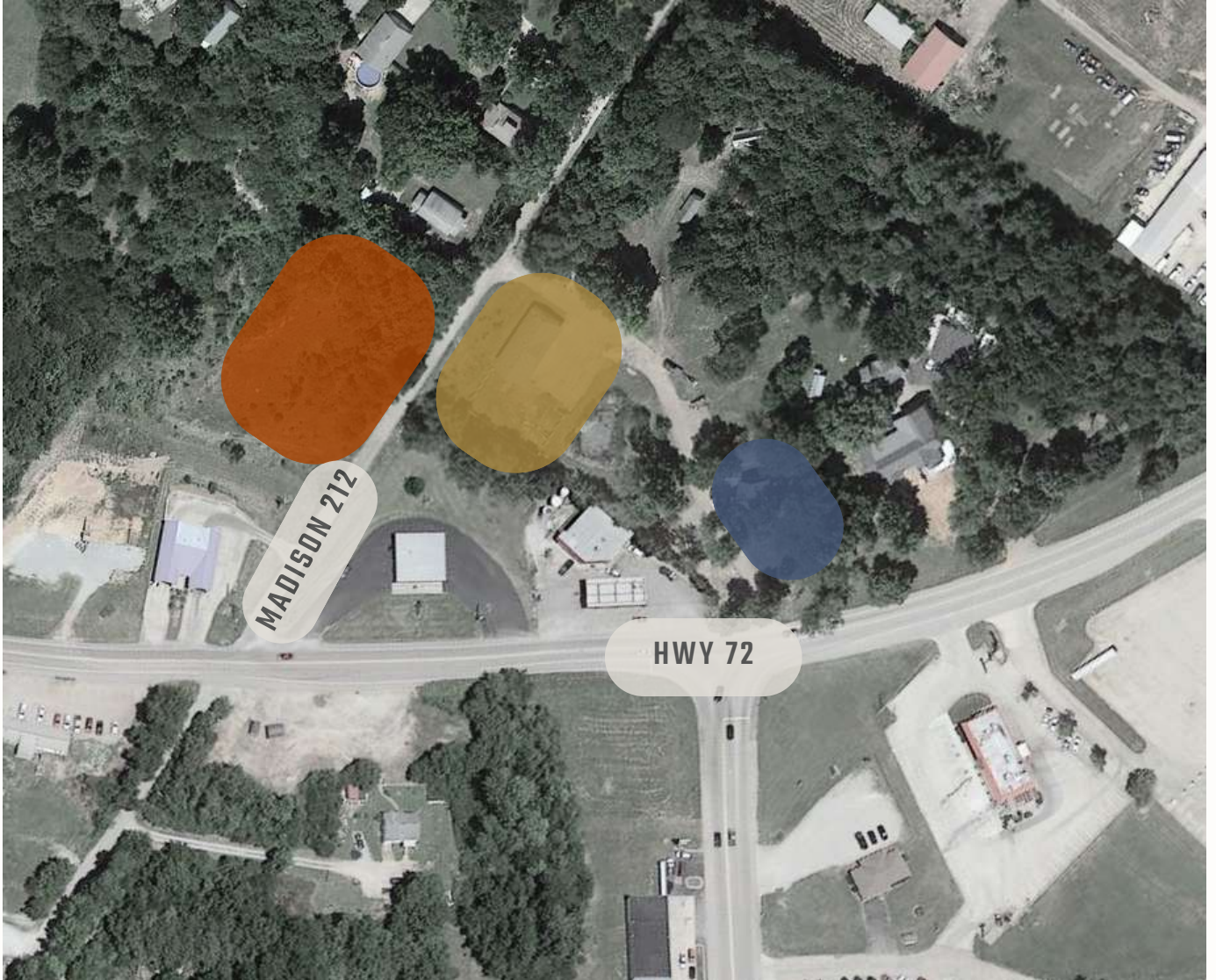
## **WHAT FORMS OF PAYMENT DO YOU ACCEPT?**

We accept credit cards, checks, or cash. Your Invoice will be sent online where you'll be able to pay via card or you can pay via check or cash by mailing it or dropping it off at The Station.

## **DO YOU REQUIRE SPECIAL EVENT INSURANCE?**

Yes, we require renters to purchase Special Event insurance. If you are serving alcohol at the event the insurance **MUST** include a liquor host license as well. The details to obtain special event insurance and a host liquor license are outlined in The Venue's Facility Use Agreement.

# LOCATION



## THE VENUE

1055 MADISON 212, FREDERICKTOWN, MO 63645



THE VENUE - Building & patio



PARKING LOT



THE STATION - Coffee shop & bistro

FARMINGTON - 23 MIN  
CAPE GIRADEAU - 1 HR 4 MIN  
ST. LOUIS - 1 HR 27 MIN



# What's next?



**We would be honored to host your special day!**

If you have any questions or need assistance, feel free to reach out – we're here to help make your day exceptional!

Interested in a tour? Schedule one with ease by reaching out via email or phone call. We look forward to hearing from you!

**CONTACT ANGELA AT 573.561.1158 EXT. 2  
OR EMAIL [THEVENUE@SAWYERSLANDING.CO](mailto:THEVENUE@SAWYERSLANDING.CO).**