

LIVE LIFE TO THE FULL  
ONE EVENT AT A TIME

---



**SOUTHPARK**  
CHURCH

3151 Apex Drive Suite 100 Charlotte, NC 28211



## ABOUT

SouthPark Church is a mixed-use campus, and a space where church and community intersect. We are a group of imperfect people seeking to live abundant and full lives.

With over 50,000 feet of indoor and outdoor multi-purpose event spaces, we offer a variety of options for your next corporate, non-profit, social, or community event.

We are conveniently located in the heart of beautiful SouthPark in the Apex Development, and are nestled in a community surrounded by restaurants, hotels, and shopping.

# BANDSTAND

**5,000 SQ FT**

**BANQUET 150 / THEATER STYLE: 225 / RECEPTION: 200**

Guest capacity will vary based on event setup

## RENTAL FEE

Monday - Thursday: \$3,000  
\$250 Each Additional Hour

Friday - Sunday: \$4,000  
\$350 Each Additional Hour

### Venue Rental Includes:

Exclusivity of the Bandstand

Exclusivity of The Terrace

(15) 72" Round Tables

(225) Black Chairs

Onsite Cleaning Services



# THE SANCTUARY

2,296 SQ FT  
THEATER STYLE: 265

Guest capacity will vary based on event setup

## RENTAL FEE

Monday - Thursday: \$2,000  
\$175 Each Additional Hour

Friday - Sunday: \$3,000  
\$250 Each Additional Hour

Venue Rental Includes:  
Exclusivity of the Sanctuary  
(265) Brown Chairs  
Onsite Cleaning Services





# CROSSROADS

**1,500 SQ FT**

**BANQUET STYLE: 150 / THEATER: 260 / RECEPTION STYLE: 200**

Guest capacity will vary based on event setup

## RENTAL FEE

Monday - Thursday: \$2,000

\$175 Each Additional Hour

Friday - Sunday: \$3,000

\$250 Each Additional Hour

### Venue Rental Includes:

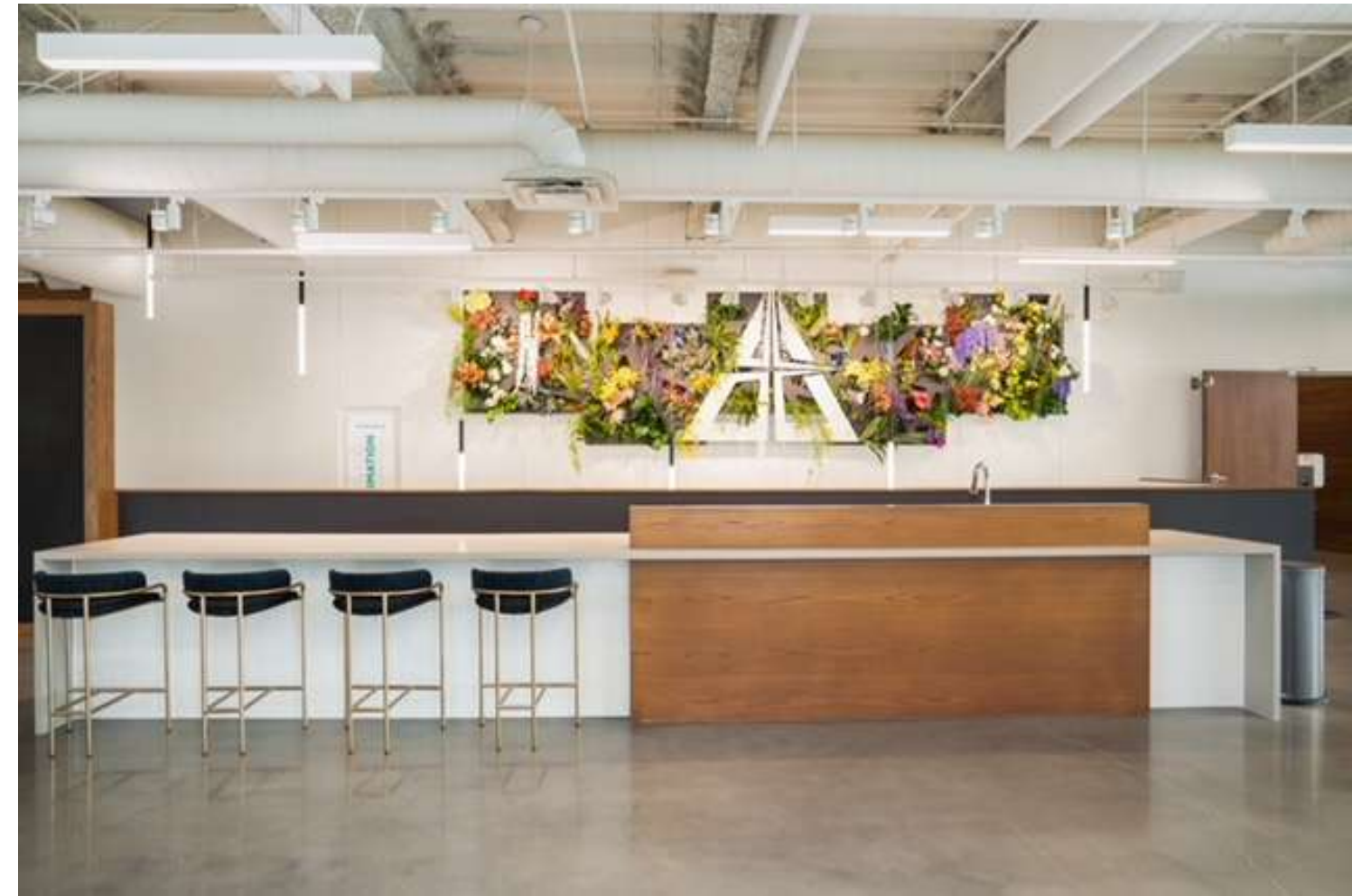
Exclusivity of Crossroads

Exclusivity of The Terrace

(15) 72" Round Tables

(225) Black Chairs

Onsite Cleaning Services





# FULL VENUE RENTAL

**8,796 SQ FT**  
**MIXED USE: 300**

Guest capacity will vary based on event setup

## RENTAL FEE

Monday - Thursday: \$5,000  
\$450 Each Additional Hour

Friday - Sunday: \$7,500  
\$625 Each Additional Hour

### Venue Rental Includes:

Exclusivity of The Bandstand On Four

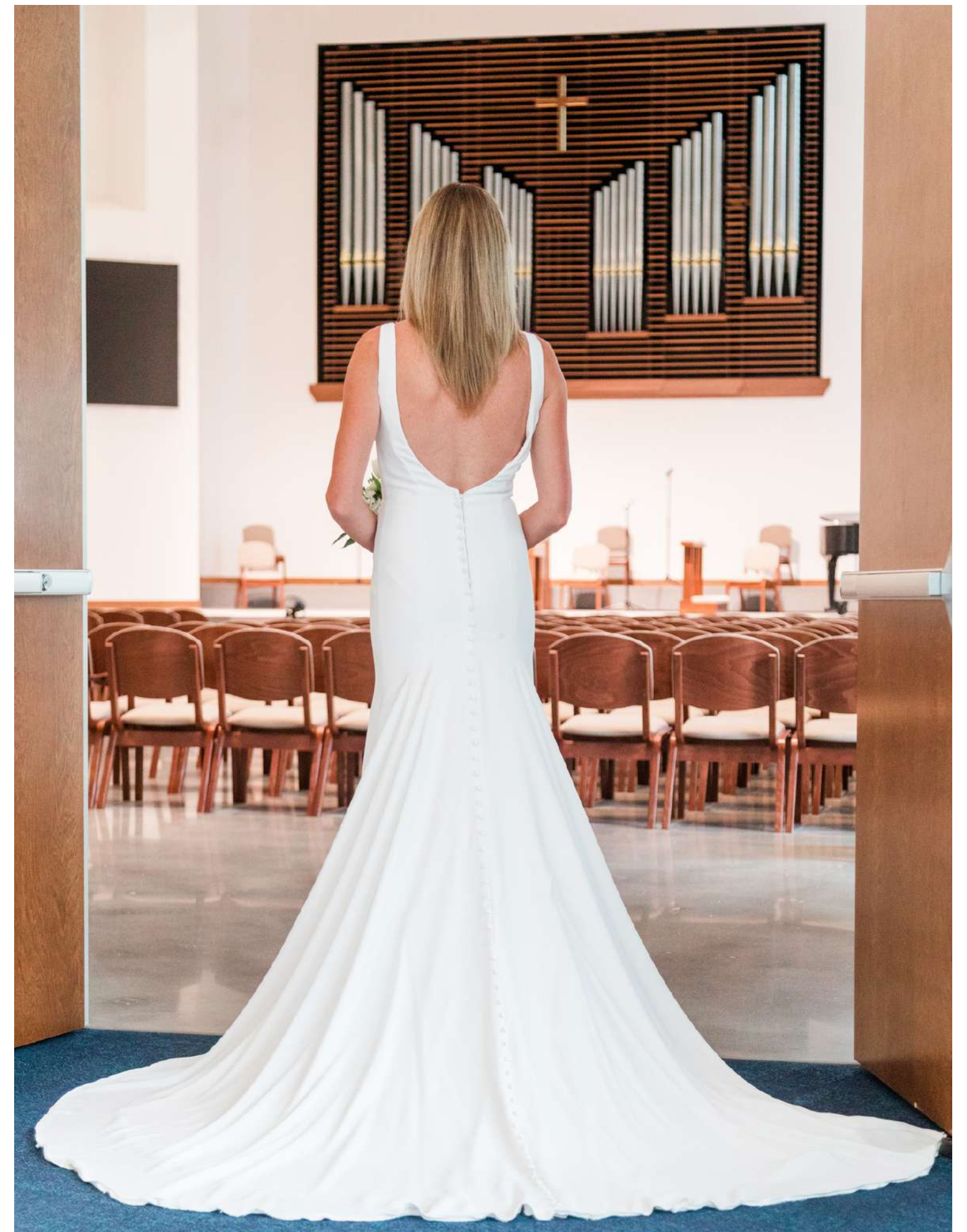
Exclusivity of The Sanctuary

Exclusivity of Crossroads

(15) 72" Round Tables

(225) Black Chairs

(265) Brown Chairs (Sanctuary Only)



Tim Souza Photography





BRIDAL SUITE

# RENTAL TERMS & CONDITIONS

## RENTAL HOURS

Each rental is based on a 12 hour time period. This 12 hour period encompasses your setup, event time, and breakdown.

## PARKING

Complimentary parking located in the Apex Parking Deck located across the street.

## SECURING THE SPACE

A 50% deposit is due at the time of signing the contract. The remaining amount is due 7 days prior to the event.

## AUDIO VISUAL

A variety of AVL equipment is included in your rental. Please reference the Tech Pack for additional information.



# STAFFING ADDITIONS

# EVENT ADDITIONS

## WEDDING PACKAGE- \$1,500

Music Director, Wedding Director, and Pastoral Services.

\*\* Based on availability

## CHILDCARE ROOMS- \$250

Renter is required to provide personnel for the rooms.

## AUDIO VISUAL - \$300 PER TECH

Based on 5 hours.

\$50 per hour per tech for each additional hour.

## EVENT RENTALS

Your event manager can assist with the rental of tables, chairs, and linens for an additional charge.

# CATERING

---

WE WANT TO MAKE YOUR EVENT EXPERIENCE AS SEAMLESS AS POSSIBLE. THAT'S WHY WE HAVE CURATED A LIST OF SOME OF THE BEST CATERING COMPANIES IN CHARLOTTE. EACH COMPANY IS UNIQUE IN THEIR OWN DELICIOUS WAY, AND CAN CREATE CUSTOMIZED MENUS JUST FOR YOU, AND YOUR GROUP.

NOT SURE WHICH COMPANY IS THE RIGHT FIT FOR YOU? WE ARE HERE TO HELP YOU NAVIGATE THROUGH THIS PROCESS.

\*Accommodations for severe allergies, religious restrictions and/or specialty desserts can be discussed with the Event Manager for consideration.

## Plate Perfect Catering.

Taryn Fenner

[tfenner@plateperfectcatering.com](mailto:tfenner@plateperfectcatering.com)

## Best Impressions Caterers

Crystal Harrell

[crystal.harrell@bestimpressionscaterers.com](mailto:crystal.harrell@bestimpressionscaterers.com)

## Noble Food & Pursuits

Lauren Shoaf

[Lauren@nobefoodandpursuits.com](mailto:Lauren@nobefoodandpursuits.com)

## La-Tea-Da's

Valerie Mena

[Valerie@lateadas.com](mailto:Valerie@lateadas.com)

## Carolina Crafts On Tap

Amber Rowe

[info@carolinacraftsontap.com](mailto:info@carolinacraftsontap.com)

## Bartenders Plus

Jake Hillyer

[jake@bartendersplusclt.com](mailto:jake@bartendersplusclt.com)





LIVE LIFE TO THE FULL  
ONE EVENT AT A TIME



**DIRECTOR OF EVENTS  
AND HOSPITALITY**

Jenni McKeown  
jmckeown@southparkchurch.com  
504-259-7288  
www.southparkchurch.com

**LET'S CONNECT**

---

**CONTACT DETAILS**



@SOUTHPARK\_CHURCH