

A grand, ornate ballroom with a large chandelier and people dancing. The room features high ceilings with intricate architectural details, including a grid of decorative panels. The walls are lined with tall, fluted columns. A balcony with a black metal railing is visible on the right side. The lighting is a mix of warm yellow from the chandelier and cooler blue and purple ambient lights. People are seen in the background, some dancing and others standing in groups. In the foreground, there are round tables with white tablecloths and floral centerpieces.

# THE BELL OF LOS ANGELES

Events at the Clubhouse





# clubhouse & theatre

We are excited to work with you to create a customized and unforgettable experience!



- Screenings
- Fundraisers
- Galas
- Weddings
- Award Shows
- Alumni Events
- Premieres
- Wrap Parties



# corporate events







# social events

Conferences  
Receptions







screenings,  
wrap parties &  
award shows







# weddings

Built in 1927, the Ebell of Los Angeles is an architectural masterpiece that brings incomparable history, glamour and elegance to each of its weddings. The Ebell of Los Angeles is an ideal location for both traditional and unconventional celebrations.







# the theatre

## SEATING CAPACITY

Orchestra: 855

Loge: 168

Balcony: 215

*Total: 1,238*





# the lounge

With an engraved ceiling, staircase and balcony, the Lounge is an impressive setting for any occasion. Your guests will have access to our beautiful, iron-gate entrance on Wilshire Boulevard.

## **CAPACITY & STYLE**

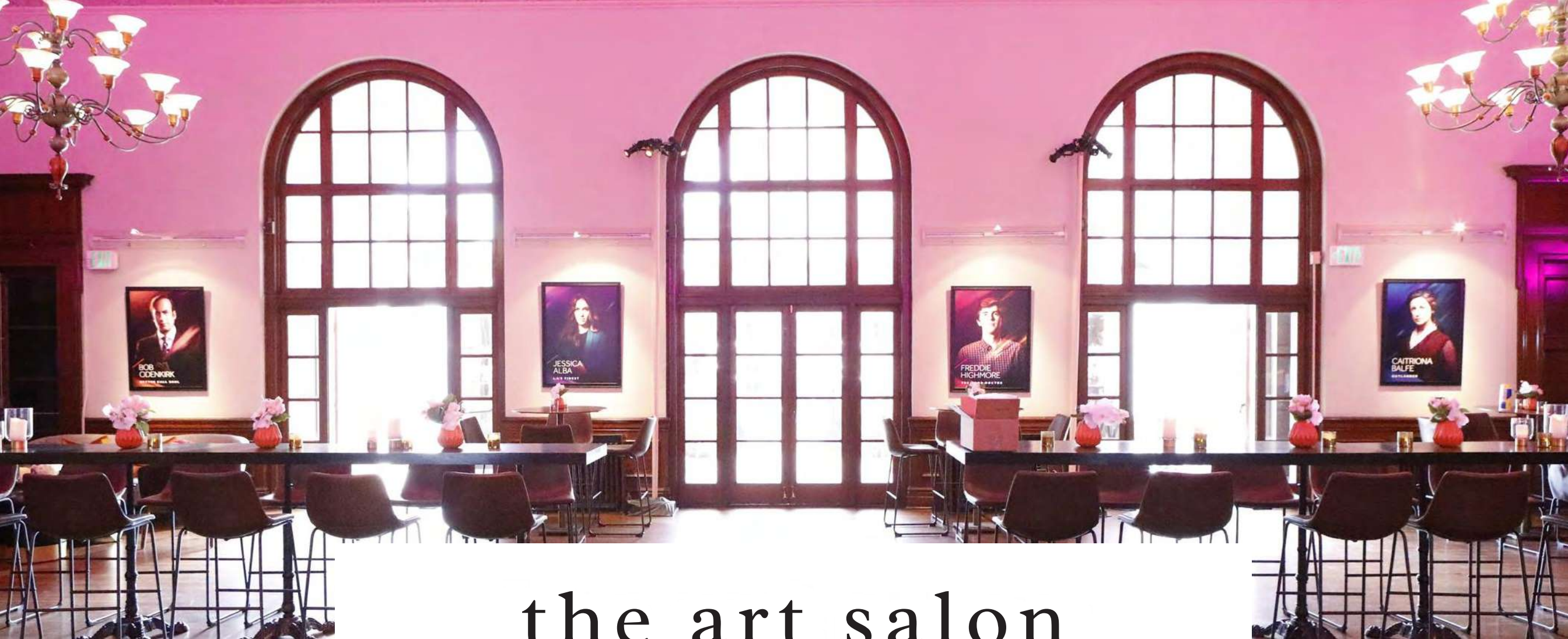
300 cocktail-style  
320 theater-style seating \*\*  
220 seated without a dance floor  
170 seated with a dance floor

*\*\* Depending on any additional event logistics*

## **SPACE DETAILS**

2,576 square feet between the columns  
21' high ceilings





# the art salon

Adjoined with The Lounge

## CAPACITY & STYLE

180 cocktail-style  
150 seated without a dance floor  
100 seated with a dance floor

## SPACE DETAILS

2,142 square feet  
18' high ceilings





# the garden

Our highly sought-after garden is perfect for guest arrivals, ceremonies, cocktail receptions and after parties. The Garden has an accessible guest entrance and is connected to our Dining Room. This space also has six elegant pairs of French doors that allows for indoor and outdoor access.

**CAPACITY & STYLE**  
400 cocktail-style  
Various seated and cocktail-style options



# the dining room

Our grand Dining Room features carved archways and a built-in stage. This is the perfect space for presentations, receptions, and screenings.

## CAPACITY & STYLE

400 cocktail-style

400 theater-style seating \*\*

300 seated dinner without a dance floor

250 seated dinner with a dance floor

*\*\* Depending on any additional event logistics*

## SPACE DETAILS


Built-in Stage: 20' x 20'

3,300 square feet between the columns

20.5' high ceilings



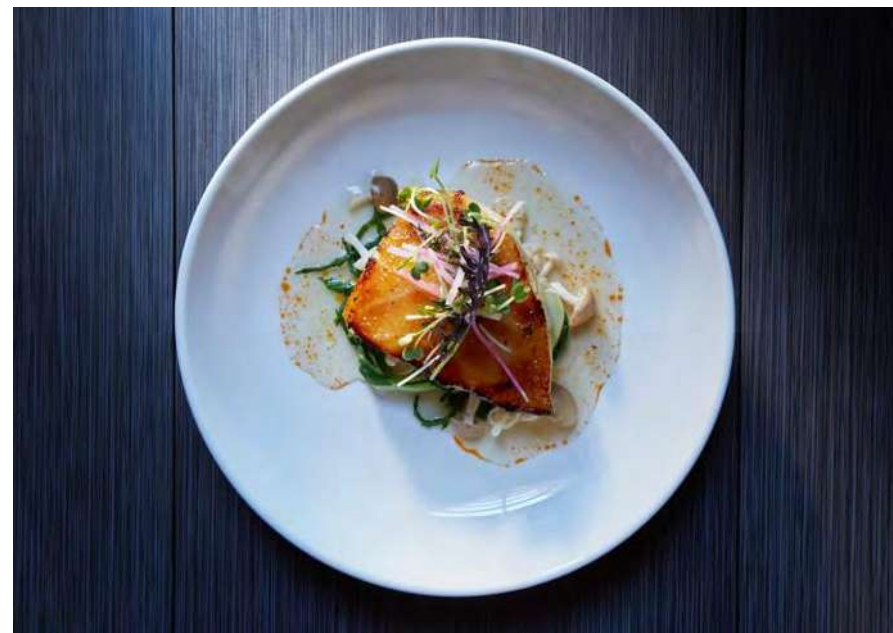




# cuisine & mixology

At The Ebell of Los Angeles, an outstanding culinary experience is just as important as the ambiance and architecture. Whether we prepare a gala menu for 1,200, a cocktail party with a variety of lite bites and flavors, or an intimate multi-course wine pairing dinner, The Ebell Special Events Team and Executive Chef can transform your event into a memorable affair.



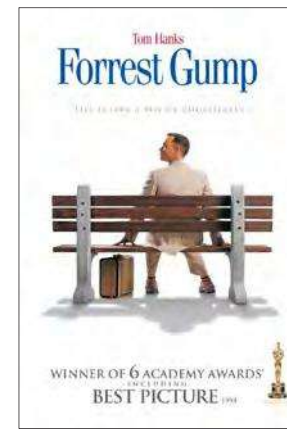
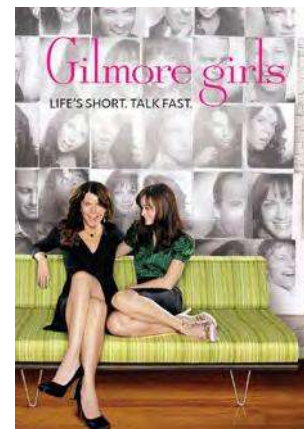
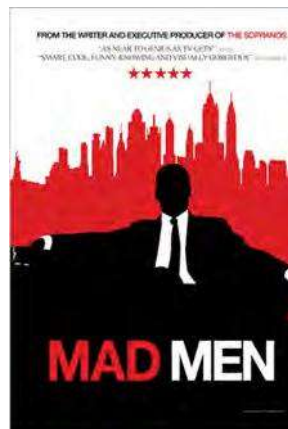




# filming

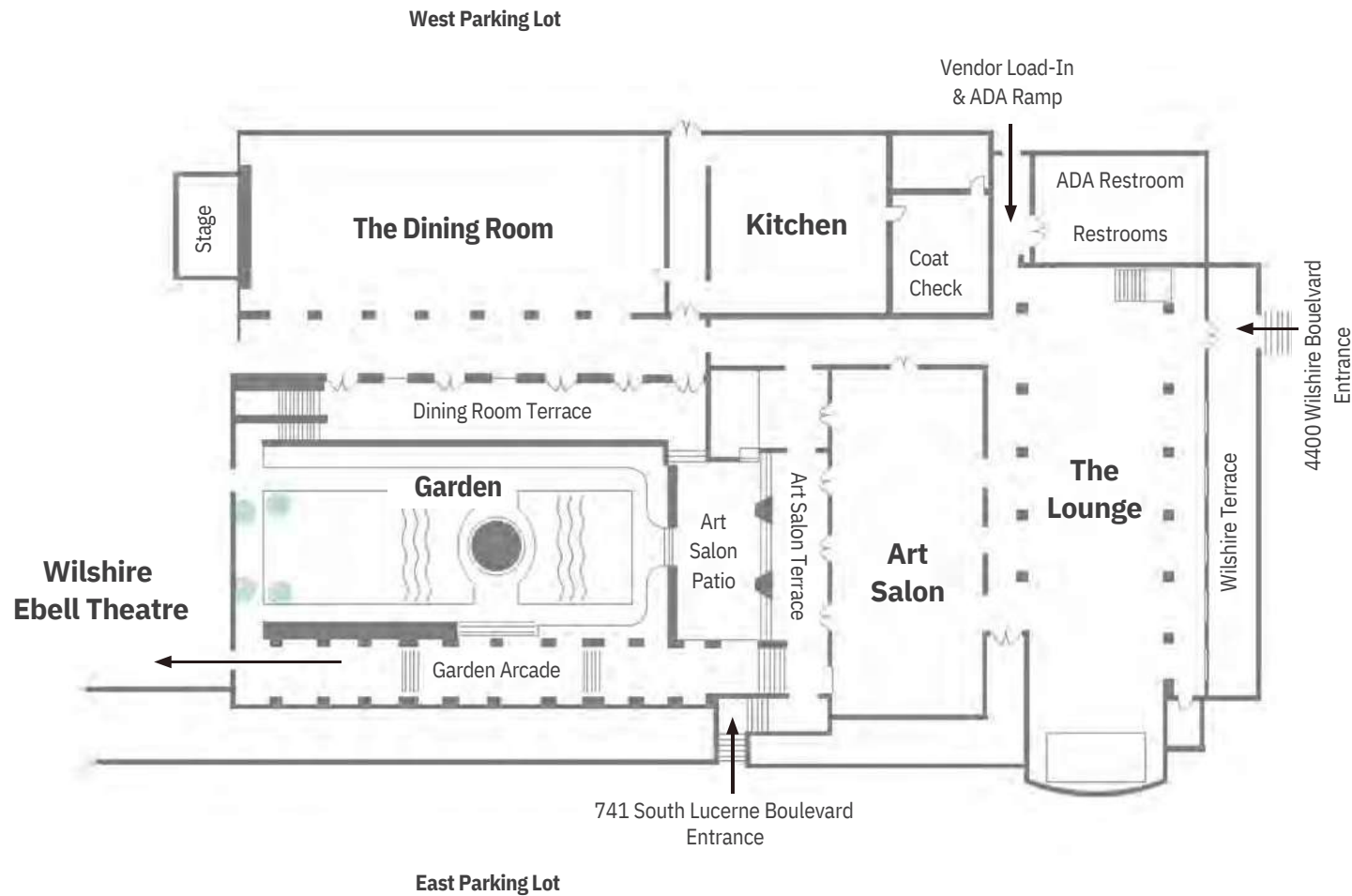
The Ebell of Los Angeles has been a favorite location for entertainment and media communities for over 50 years. The Ebell offers four floors of distinct spaces with available on-site parking for base camp, crew parking, and equipment. Referred to as "Studio Ebell", it's the ideal setting for motion pictures, television, and still photography.

**Clockwise from top left:** *Fued*, the Sunroom; *Selena Gomez's "Kill Em With Kindness"*, the Lounge; *Mad Men*, the Lounge; *The Artist*, the Library





# room capacities & style



ROOM	QUANTITY & STYLE	SQ. FT.	DETAILS
Theatre	Orchestra: 855 Loge: 168 Balcony: 215 Total: 1,238		
Lounge	300 cocktail-style 320 theater-style seating ** 220 seated without a dance floor 170 seated with a dance floor	2,576 sq. ft. between the columns	Ceiling Height 20.5'
Art Salon	180 cocktail-style 150 seated without a dance floor 100 seated with a dance floor	2,142 sq. ft.	Ceiling Height 18'
Garden	400 cocktail-style Various seated and cocktail-style options		
Dining Room	400 cocktail-style 400 theater-style seating ** 300 seated dinner without a dance floor 250 seated dinner with a dance floor	3,300 sq. ft. between the columns	Ceiling Height 20.5' Built-in Stage: 20' x 20'

**\*\* Depending on any additional event logistics**



# history

## Historic Clubhouse & Theatre

The Ebell of Los Angeles is LA's longest running women's organization. Inspired by scholar Dr. Adrian Ebell, the Ebell of Los Angeles was founded by women, for women in 1894. The non-profit organization remains dedicated to its original mission "to interest women in the study of all branches of literature, art and science and the advancement of women in every branch of culture." The organization's philanthropic endeavors include awarding scholarships to students and providing grants to charities that help at-risk women and children in the Los Angeles community. The club also hosts social and cultural events that inspire and empower. It is a gathering place to connect with artists, educators, authors, entertainers, speakers and politicians. The Ebell has been honored to host diverse and outstanding women such as Amelia Earhart, the last Queen of Romania and Michelle Obama.

Designed by architect Sumner Hunt, the Ebell of Los Angeles commemorates nearly 100 years on Wilshire Boulevard. With three levels and more than 75,000 square feet, the Italian renaissance-inspired structure is a noted architectural treasure and registered National Historic Landmark. The building includes a grand dining room, art salon, courtyard garden, lounge, and 1,238 seat Broadway-style theater. History resonates throughout the building - the Art Salon was the first art gallery in Los Angeles to showcase women artists. Judy Garland was discovered on the Wilshire Ebell Theatre stage; and in nine decades, the theatre stage has been graced by performers ranging from Elizabeth Taylor to Beyoncé.



*Empowering Women Since 1894*





**Ebell Clubhouse**  
743 South Lucerne Boulevard  
Los Angeles, California 90005

**Ebell Wilshire Theatre**  
4401 West 8th Street  
Los Angeles, California 90005

*Special Events Sales Manager*  
Alexis Hernandez  
(323) 931-1277 x 111  
alexis@ebellofla.org

*Theatre Business Manager*  
Erika Newman  
(323) 931-1277 x 141  
Theatre Direct Line: (323) 939-0126  
erika@wilshireebelltheatre.org

[www.EbellofLA.org](http://www.EbellofLA.org)

