

SIMPLIFY YOUR EVENTS

# DISCOVER THE PERFECT SPACE

YOUR VISION, OUR VENUE



**SOUTHWESTERN**  
CONFERENCE CENTER



## MEETING VENUE

---

The Southwestern Conference Center features more than 7,000 square feet of versatile meeting space, which includes an auditorium & 4 breakout rooms. All meeting space is conveniently located on the first floor and is easily accessible to all attendees. This space is an excellent choice for a wide range of events such as general sessions, exhibits, receptions, and more.

---

AUDITORIUM: 3,249 SQ. FT.

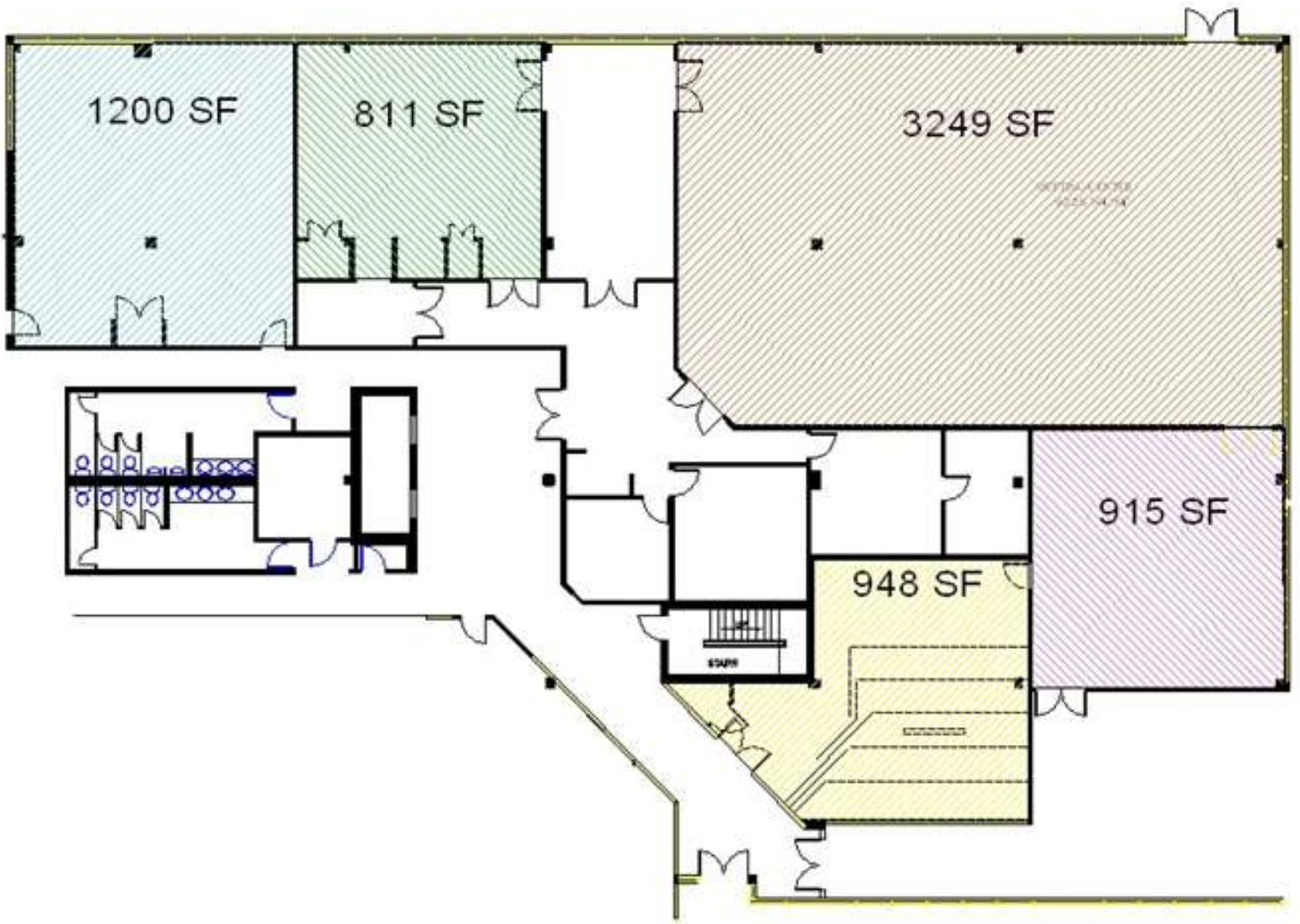
PENUEL: 1,200 SQ. FT.

MOSLEY: 915 SQ. FT.

WELCH: 811 SQ. FT.

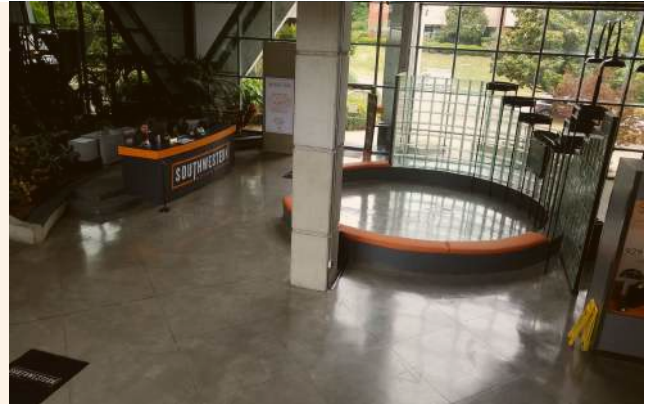
TRAINING LAB: 948 SQ. FT.

# LAYOUT



# Explore OUR VENUE

# SPECS



Space	Floor	Building	Sq Ft.	Dimensions (Ft.)	Theatre	Classroom (2 per 5' table)	Conference	Banquet (8 per table)	Banquet (10 per table)
<b>Meeting Rooms</b>									
Auditorium	1st	2	3249	72 x 45	360	192	N/A	200	250
Auditorium Lobby	1st	2	750	50 x 15	N/A	N/A	N/A	N/A	N/A
Welch	1st	2	811	30 x 24	77	46	N/A	48	60
Penuel	1st	2	1200	33 x 36	150	72	N/A	72	90
Training Lab	1st	2	948	N/A	N/A	34	N/A	N/A	N/A
Mosely	1st	2	915	30.5 x 30	105	60	N/A	72	90
SWC Training Lab	1st	1	620	28 x 22	69	26	15	52	N/A
<b>Atrium</b>									
Atrium	1st	Atrium	N/A	N/A	N/A	N/A	N/A	N/A	140
<b>Boardrooms</b>									
SWC Conference Room	1st	1	300	20X15	NA	NA	10	NA	NA
SWF Boardroom	2nd	1	300	20 x 15	N/A	N/A	10	N/A	N/A
IT Conference Room	2nd	1	300	20 x 15	N/A	N/A	10	N/A	N/A
Heffel Boardroom	2nd	2	405	27 x 15	N/A	N/A	10	N/A	N/A
Carl Roberts Boardroom	3rd	1	400	16 x 25	N/A	N/A	10	N/A	N/A
Hays Boardroom	3rd	1	513	27 x 19	N/A	N/A	12	N/A	N/A
Henderson Boardroom	3rd	1	255	17 x 15	N/A	N/A	8	N/A	N/A
General Accounting Boardroom	3rd	2	300	20 x 15	N/A	N/A	10	N/A	N/A

*Dimensions are estimates only and may not be exact measurements. Square footage is approximate and figures are for maximum room sets. Floor plans are subject to change. Southwestern reserves the right to modify, revise or withdraw these plans at their sole discretion without prior notice.*

# AUDIO VISUAL

## Auditorium

- Build-in 28' x 8' stage
- 2 built in 6000 lumen Laser projectors
- 2 built in screens
- 2- 55" monitors
- 55" Confidence monitor for presenters
- HDMI input for laptops
- Blue-ray player
- Wireless handheld microphone built in
- Wireless lavalier microphone built in
- Lectern microphone
- 4 microphone/line inputs on stage
- Crestron Touch Panel for complete lighting & audio control on stage or in back of the room.
- 18 - 8" ceiling mounted Speakers
- LED Audience and stage lighting

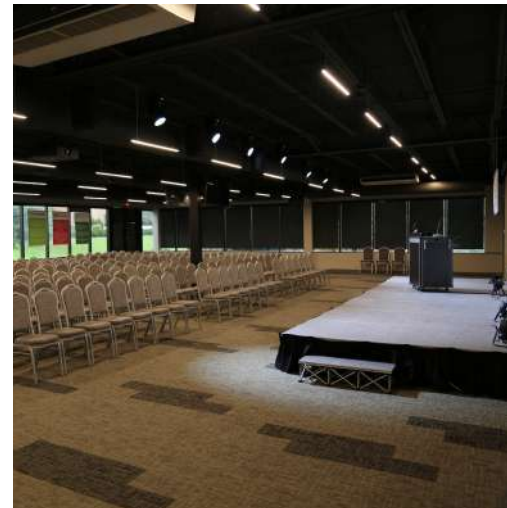
## Training Lab

- 2 - 75" monitors on front wall for presentations
- HDMI input
- Wireless lavalier mic
- Sound system
- Crestron Touch Panel to control audio
- LED Lights or Can Lights

## Mosley

- 2 wall mounted 80" monitors
- Microphone
- Speakers
- Equipment for video conferencing through Zoom Meetings

**\*Should you require additional AV, please inquire for a quote.**

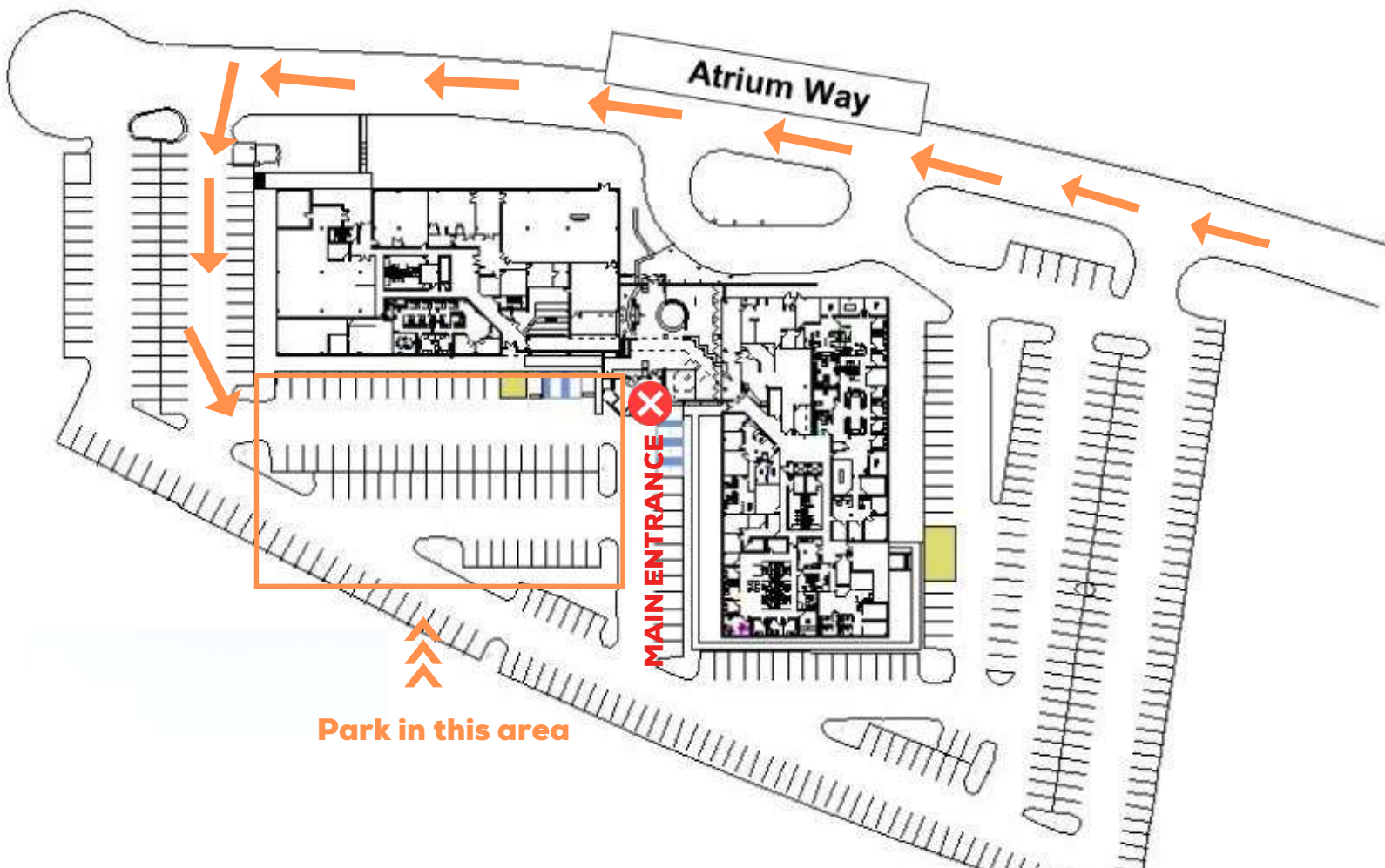


# PARKING

---

The red "X" indicates the main entrance of the building where all guests should enter.

Turn left into the Southwestern Conference Center parking lot, passing the two glass buildings on Atrium Way. Go around the building and park anywhere close to the main entrance of the building distinguished by the red 'X' on the map. There is a statue of two gentlemen and three flagpoles that guests will be able to see near the main entrance.



# DISCOVER THE PERFECT SPACE

---

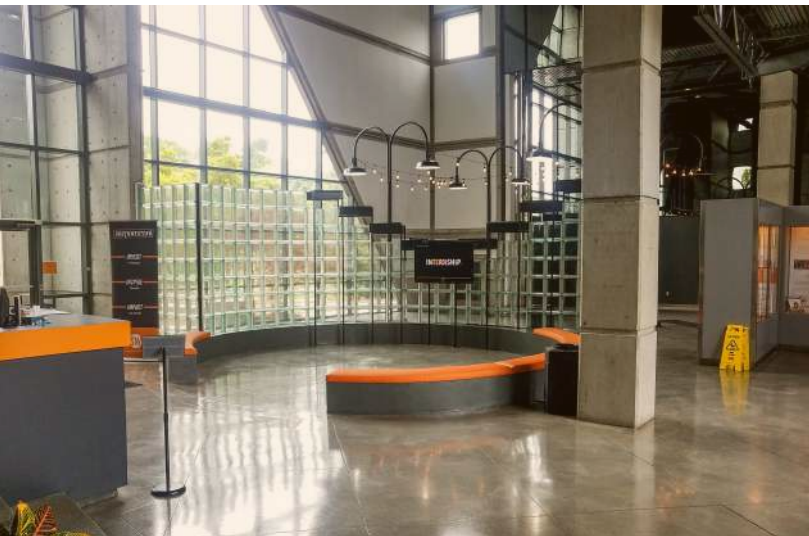
## VENUE AMENITIES

- ✔ Nashville Airport Area
- ✔ 7,000 sq ft of Meeting Space
- ✔ State of the Art Audio Visual
- ✔ Complimentary Parking
- ✔ Complimentary Wi-Fi
- ✔ Local Hotel Partnerships
- ✔ F&B Packages Available
- ✔ Tables and Chairs

**BOOK A SITE VISIT TODAY!**

- 🌐 888-222-4441, Option 3
- 📍 2451 Atrium Way, Nashville, TN





# **SOUTHWESTERN** CONFERENCE CENTER