

DANIEL

PRIVATE DINING

Chef Daniel Boulud is delighted to offer you a unique and exclusive private dining experience at his acclaimed flagship restaurant. DANIEL is a perfect setting for both business and social occasions, with the level of attention to detail and sophistication that one would expect from a legendary restaurant.

Our Directors of Private Dining personally attend to your special event needs - from designing a custom menu and coordinating service flawlessly with your timeline, to finding the perfect musical entertainment and ordering breathtaking floral arrangements. There are many ways to experience private dining at DANIEL.

We look forward to welcoming you to DANIEL and invite you to make an appointment for a private tour and consultation.



To inquire about planning an event at DANIEL, contact:

April Avila, Director of Private Dining
aavila@danielboulud.com, Tel 21 2.933.5262



DANIEL

CUISINE & WINE

CUISINE

Chef Daniel Boulud would like to offer you an exquisite dining experience made memorable by unparalleled dedication to quality ingredients, expert preparation, and pristine service. His modern French cuisine celebrates nature's bounty, revealing the flavors of each season's finest ingredients. Whether you are planning a three-course luncheon or an extravagant six-course wine tasting dinner, Chef Boulud would be pleased to create a personalized menu for you and your guests.



THE WINE CELLAR

Our award-winning wine list is composed of over 1,500 selections including many rare Bordeaux and Burgundy offerings. Our Chef Sommelier Rajeev Vaidya has designed a wine list which is as impressive for its range and depth as it is for its clarity and accessibility. In addition, we offer an extensive list of digestifs including a vertical selection of Calvados dating from 1948, old Armagnacs and Cognacs.

DÉCOR

In 2008, as this iconic New York institution approached its fifteenth anniversary, it was thoroughly redesigned by the renowned Adam D. Tihany. The restaurant's striking neo-classical architecture remains a backdrop for elegant and sleek new furnishings. Known for successfully integrating bold, contemporary designs in landmark spaces, Tihany Design's aesthetic is an unexpected integration of harmony, design and architecture.





DANIEL

THE ROOMS



The Bellecour Room

Located adjacent to the restaurant's lounge and featuring natural light through a series of windows facing East 65th Street, the Bellecour Room is available for breakfast, lunch, or dinner. This entirely private space can seat up to 90 guests comfortably in a full room configuration while hand stitched leather partitions shape the level of intimacy for gatherings of 25 or less. The Bellecour also acts as an ideal destination for standing receptions of up to 150 guests with a private service bar and open concept.

The Bar & Lounge

Perfect for a pre-dinner gathering for parties of over 60 guests, The Bar & Lounge offers comfortable intimacy before proceeding to the table. A set of partitions interwoven with metalwork branches close off the Bar and Lounge to offer you and your guests a completely exclusive reception space with passed hors d'oeuvres and dedicated bar. The Bar features a cerused walnut front and midnight blue marble top and is backlit with a signature etched glass façade. The Upper Lounge is lushly paneled with dark mahogany and serves as a quiet counterpart to the bar.



The Main Dining Room

DANIEL's exquisite Main Dining Room, with its grand neo classical architecture, is available for seated events for up to 160 guests. From the soaring coffered ceiling and sunken dining area, our dining room is an elegant refuge from the pace of city life. Illuminated by custom Bernadaud chandeliers, the classic white color palette is accented by exquisite greenery by Winston Flowers and custom artworks by Manolo Valdés.

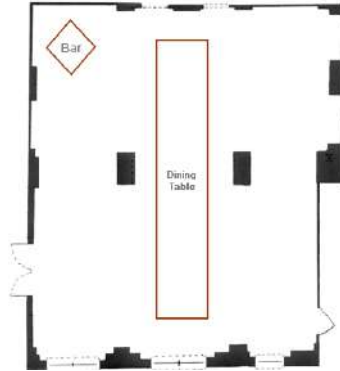


DANIEL

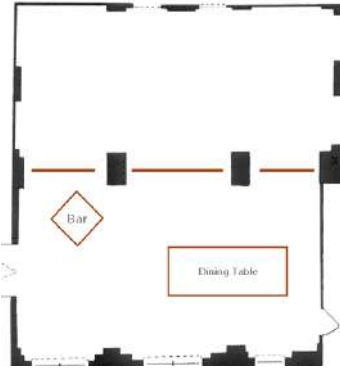
FLOOR PLANS

The Bellecour Room

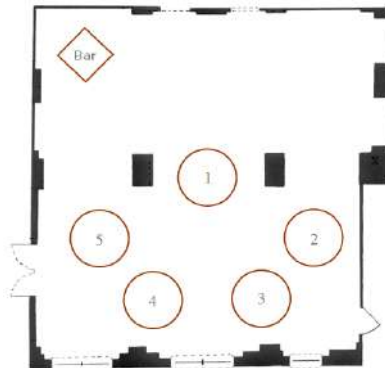
At 1400 square feet, the Bellecour Room comfortably seats up to 90 guests for lunch or dinner. Centrally located pillars allow for unique half-room configurations which divide the space into an intimate setting for groups of 20 and fewer. Festive occasions of over 60 guests are recommended to begin in the restaurant's Bar & Lounge for a spacious reception before dining in the Bellecour Room.



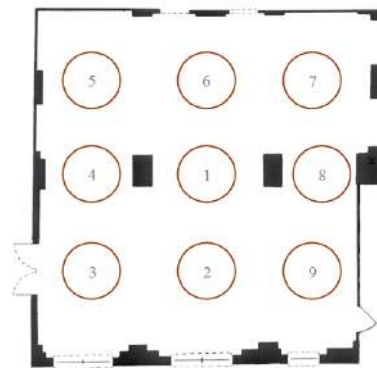
21-30 guests



Under 20 guests



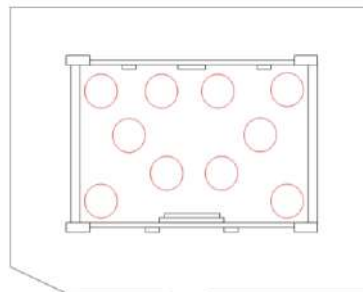
Under 50 guests



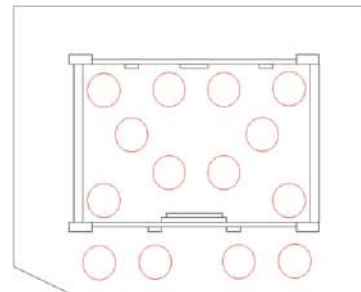
51-90 guests

The Main Dining Room

Comprised of two distinct levels, The Main Dining Room has a comfortable capacity of 160 guests. The sunken central "pool" level is ideal for groups of 100 or less while the surrounding balcony accommodates additional guests on an elevated level allowing for clear views and easy movement amongst tables.



100 guests



140 guests



PRICING

COCKTAIL RECEPTION

- One (1) Hour of Passed Hors d'oeuvres, \$40 per person
- One (1) Hour Open Bar, \$45 per person

MENUS

- Lunch: Three (3) Courses, \$105 per person
- Dinner: Four (4) Courses, \$225 per person; tasting menus available upon request

Menu prices are subject to change and do not include beverages, gratuities, taxes or other charges.

COOKBOOKS BY DANIEL BOULUD

From \$20 to \$60

AUDIO VISUAL EQUIPMENT RENTAL

Pricing available upon request

AMENITY CHARGES

Custom Printed Menus, \$3.50 per person

Escort & Place Cards, \$2 each

Dance Floor (max: 12ft x 15 ft), \$1,000

Please contact our Private Dining Department for further information.

APRIL AVILA, DIRECTOR OF PRIVATE DINING
AAVILA@DANIELBOULUD.COM, TEL 212.933.5262



GUARANTEES AND PAYMENT

DANIEL requires a minimum guarantee of attendance five (5) business days prior to the event. This number is not subject to reduction thereafter. In the event unexpected guests should attend, we will be prepared to serve ten (10) percent over the guaranteed number of guests. A deposit of 25% of the estimated total event cost is required in order to guarantee the reservation. Payment can be made through personal or company checks, American Express, Visa, MasterCard and Diners Club.

SALES TAX AND GRATUITY

The New York sales tax of 8.875% will be applied to the entire invoice, gratuity excluded. Gratuity for the service staff and coat check attendants are selected by the host. Customary gratuities for the service team range from 15% to 20% (on food and beverage) and coat check attendants range from \$1.50 to \$3 per guest. If your event is hosted by a tax-exempt organization, a valid New York sales tax exempt certificate must be provided no later than ten (10) business days prior to the day of the event.

ADMINISTRATIVE FEE

A 5% administrative fee on food and beverage subtotal will be applied to all events.





HOTELS AND PARKING

HOTELS

The following hotels are located in our area:

Plaza Athenée Hotel	TEL 212 734 9100	37 East 64 th Street Between Park and Madison
Four Seasons Hotel	TEL 212 758 5700	57 East 57 th Street Between Park and Madison
The Pierre Hotel	TEL 212 838 8000	2 East 61 st Street Between Madison and 5 th
The Plaza	TEL 212 759-3000	768 Fifth Avenue Between 58 th Street and 59 th Street
The Carlyle	TEL 212 744 1600	35 East 76 th Street Between Park and Madison
Loews Regency	TEL 212 759 4100	540 Park Avenue Between 61 st Street and 62 nd Street

PARKING FACILITIES

There are two parking garages located in the area:

Colony Garage	TEL 212 879 8798	30 East 65 th Street Between Madison and Park
NYC Parking 605 Parking Corp.	TEL 646 556 7319	112 East 65 th Street Between Park and Lexington

DIRECTIONS TO DANIEL

FROM LONG ISLAND, NEW YORK

Take the Long Island Expressway west to the Midtown Tunnel. Keep right after exiting the Tunnel and take 36th Street to Madison Avenue. Proceed uptown (north) on Madison to 65th Street. Turn right on 65th Street. DANIEL will be on the right side of the street before you reach Park Avenue.

FROM NORTHERN NEW JERSEY

Take the George Washington Bridge to New York. Stay on the upper level of the bridge and take the Harlem River Drive, direction downtown (this will turn into FDR Drive South). Exit at 63rd Street and proceed west to Madison Avenue. Proceed uptown (north) on Madison to 65th Street. Turn right on 65th Street. DANIEL will be on the right side of the street before you reach Park Avenue.

FROM SOUTHERN NEW JERSEY

Take the Lincoln Tunnel to New York. Keep to the left as you exit the Tunnel. Following the signs to 42nd Street, make a quick right turn on 40th Street. Continue east to Madison Avenue. Turn left on Madison, and proceed uptown (north) to 65th Street. Turn right on 65th Street. DANIEL will be on the right side of the street before you reach Park Avenue.