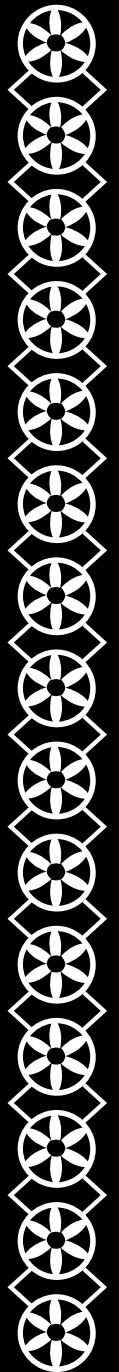
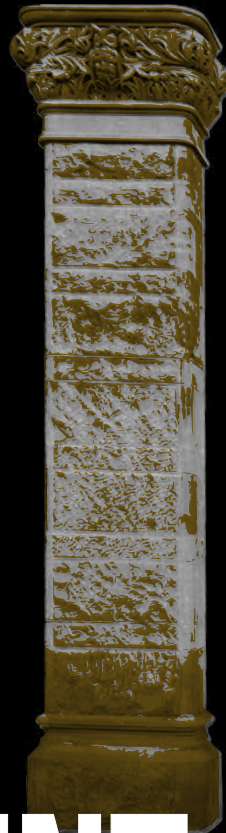
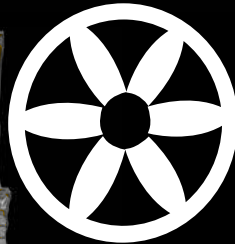




918 F STREET, NW  
WASHINGTON, D.C.



EST. 1890

# CLIENT KIT





# OVERVIEW

<b>BACKGROUND</b>	<b>5</b>
<b>ACCESSIBILITY</b>	<b>6</b>
<b>AMENITIES</b>	<b>7</b>
<b>LAYOUT OF THE SPACE</b>	<b>8</b>
<b>RENTALS BY ROOM</b>	<b>10</b>
<b>PREFERRED PARTNERS</b>	<b>19</b>
<b>PARKING NEARBY</b>	<b>22</b>
<b>HOTELS NEARBY</b>	<b>23</b>





**27,000  
RENTABLE  
SQ FT**

# BACKGROUND

## SEVEN STORIES OF HISTORIC ELEGANCE

The National Union Building is a 27,000 square foot venue built in the Romanesque Revival style in 1890. Designed by famous architect Glenn Brown (1854-1932), the building is one of the most important of his DC works. Mr. Brown used it as his office between 1890 and 1905. During that time, the National Union Building was the scene of many meetings that were significant in the planning of the capital. Built of Hummelstown brownstone quarried in Pennsylvania, the structure today ranks as the city's most outstanding example of the commercial "Richardsonian" Romanesque Revival.

**NOW, A VERSATILE  
AND BOUNDLESS  
VENUE ABLE TO  
ACCOMMODATE  
YOUR EVERY NEED**

### UTILIZE OUR SPACE FOR:

WEDDINGS

REHEARSAL DINNERS

CORPORATE EVENTS

PARTIES

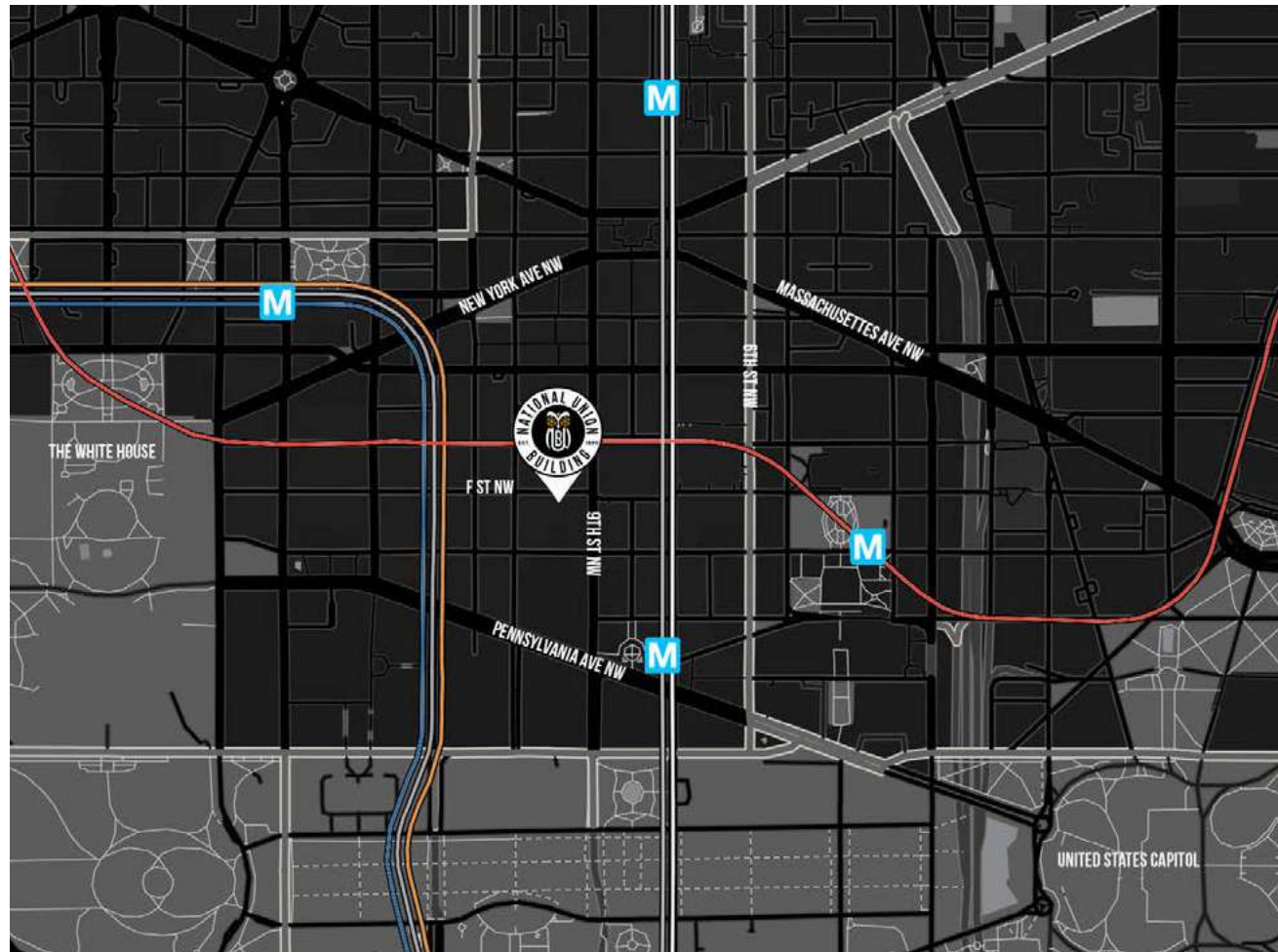
PRODUCT LAUNCHES

SOCIAL EVENTS

COMMUNITY EVENTS







# AMENITIES

The National Union Building is in the center of DC, surrounded by some of the best restaurants and hotels in the city. We are located right between Gallery Place and Metro Center Stations, providing easy public transportation access as well as several nearby secured parking garages for your guest's convenience. Inside the building, there are a variety of spaces that are perfect for different types of events. Additionally, while the building is historic and has a distinctive style, the individual spaces can be decorated to fit the personality of each event. Plus, time limits for events are very flexible.

# ACCESSIBILITY

Public transportation is encouraged. There are abundant hotel options nearby.

The building itself has elevator access to all 7 floors.



ONE BLOCK FROM GALLERY PLACE METRO (RED AND GREEN LINES)



TWO BLOCKS FROM METRO CENTER (RED, ORANGE, BLUE, AND SILVER LINES)



ON A THROUGHFARE OF ALL MAJOR BUS LINES



MULTIPLE SECURE PARKING GARAGES WITHIN TWO BLOCKS



VALET PARKING AVAILABLE BY CONTRACT



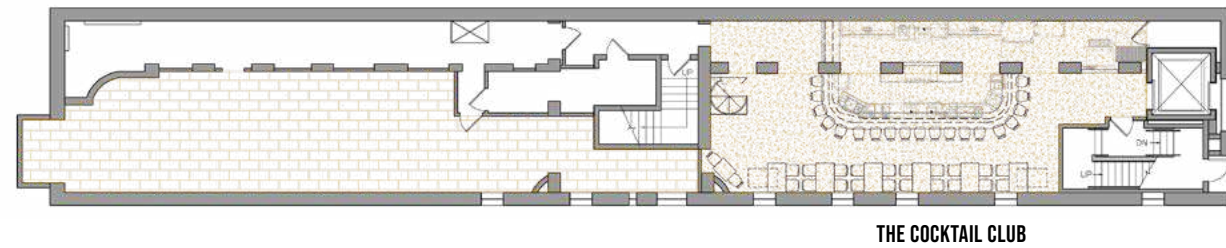


# LAYOUT OF THE SPACE

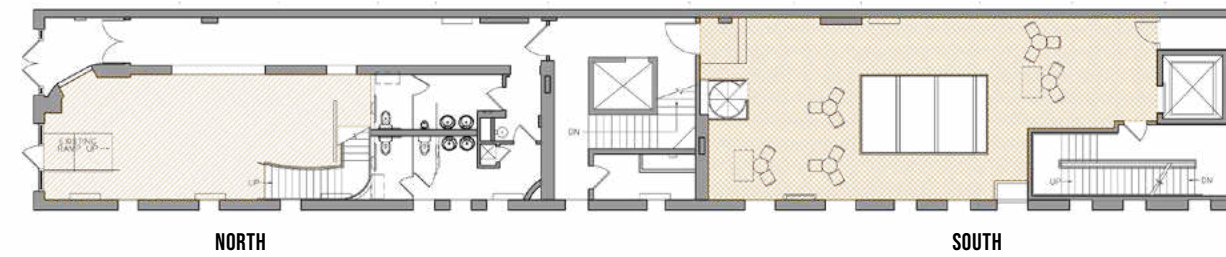
Please note that tables and chairs in diagrams are for demonstration purposes only, all spaces are flexible for your unique setup.



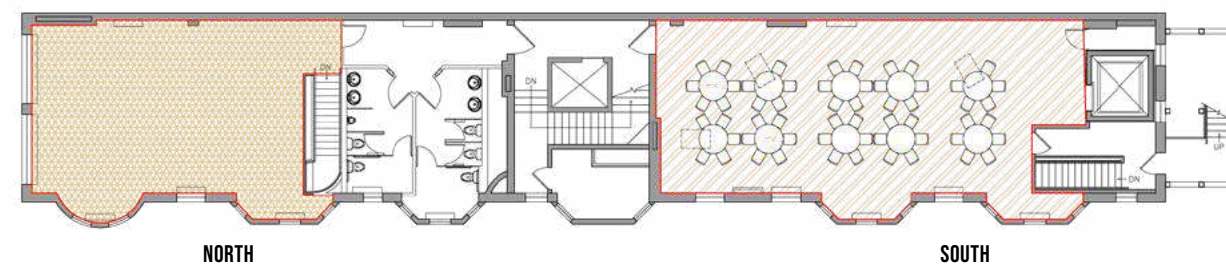
## BASEMENT



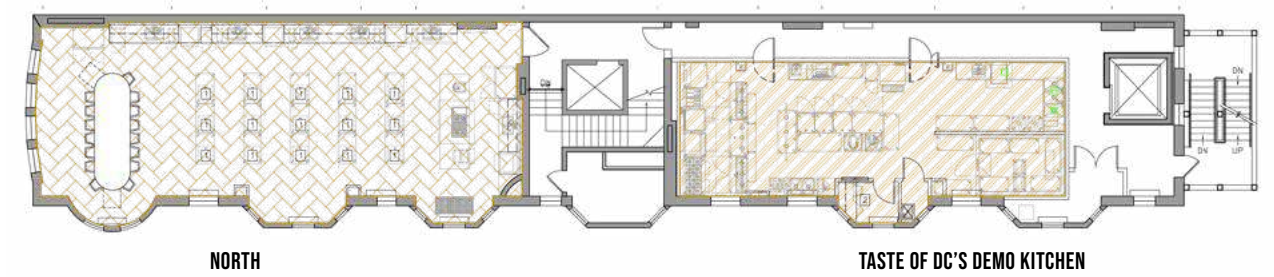
## FIRST FLOOR



## SECOND FLOOR



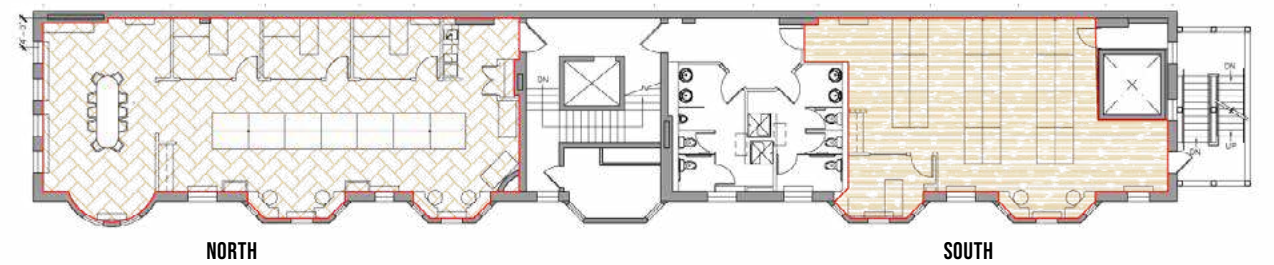
## THIRD FLOOR



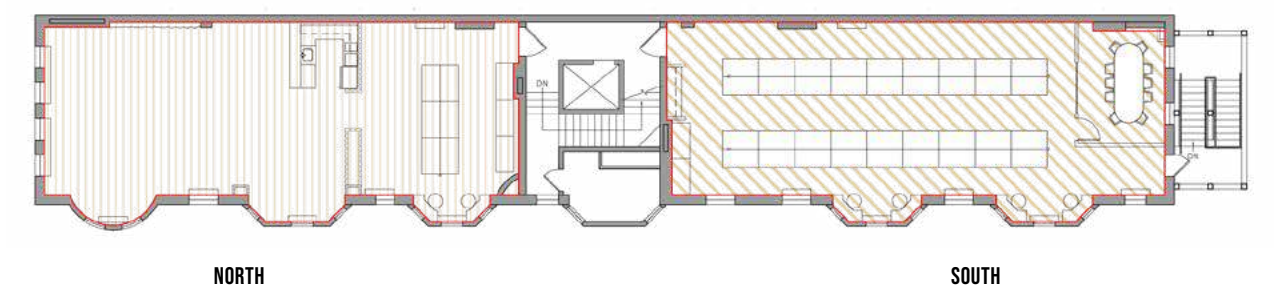
## FOURTH FLOOR



## FIFTH FLOOR



## SIXTH FLOOR





# FIRST FLOOR NORTH

**510 SQ. FT.**  
**50 GUESTS RECEPTION**

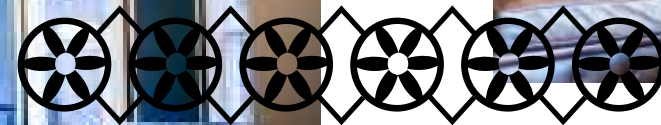
Intimate space with black tin roof ceiling, subdued lighting, brick walls and a cozy feeling perfect for a cocktail party or other reception style event. A perfect add on to the lounge above in second north for a two-level intimate event.



# SECOND FLOOR NORTH

**120 GUESTS (CONFERENCE OR COCKTAILS)**  
**80 SEATED IN ROUNDS**  
**50 CLASSROOM**  
**766 SQ. FT.**

With Arched Windows in the front of the room, tin ceilings and a carved mantle, this room is both expansive and intimate. There is easy access to restrooms on the way to the central elevator and can be combined with 2nd Floor South on the same floor for a more expansive event or 1st Floor North for a two-level intimate event.





# TASTE OF DC'S DEMO KITCHEN

**1282 SQ. FT.**

**50 GUESTS**

**LOCATED ON THIRD FLOOR NORTH**

The perfect space for a variety of classes, particularly cooking classes. You can arrange for one of our talented Cooking Instructors to provide a class for family & friends, or as a Team Building event for your workplace. Beverage pairing packages are available for any class.



# 4 NORTH

**150 GUESTS** (CONFERENCE OR COCKTAILS)

**120 SEATED IN ROUNDS**

**100 CLASSROOM**

**1260 SQ. FT.**

A view of the neighborhood roofline dominates the view at the front of this space. Original light fixtures in window nooks and tin ceilings make for a fantastic space for parties. Equally useful for business presentations, this room features two ceiling-hung projectors and screens.







# 6 NORTH

**150 GUESTS** (CONFERENCE OR COCKTAILS)  
**120 SEATED IN ROUNDS**  
**100 CLASSROOM**  
**1093 SQ. FT.**

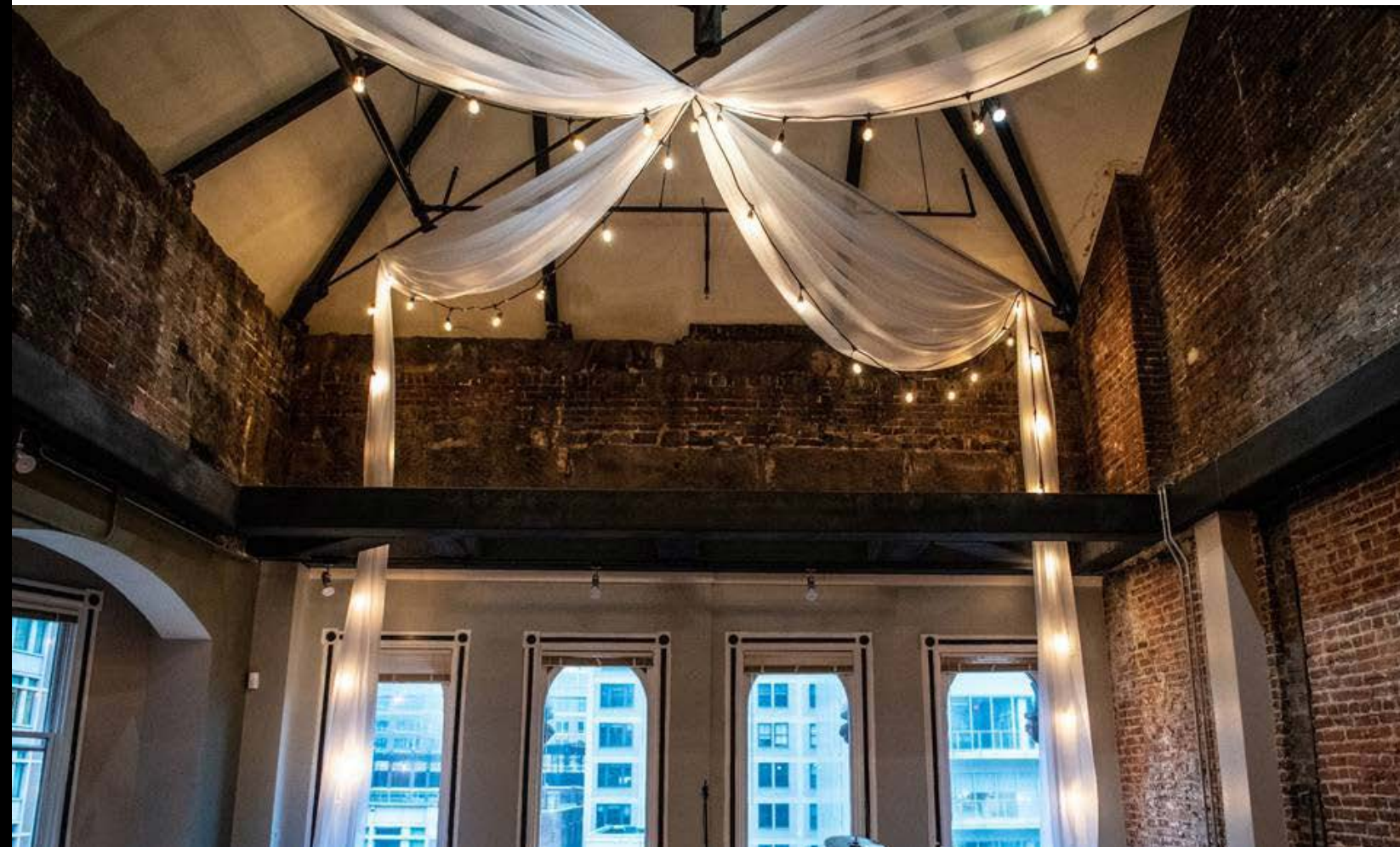
A stunning vaulted ceiling at the front of this large space provides guests with the experience of being in the roof of National Union Building. It contains some of the original timber used to hold up the spire & the hand-chiseled brownstone from Pennsylvania that make up the façade. Light wood floors and the height of the space provides lovely light during the day and elegance at night.



# 4 SOUTH

**100 GUESTS** (CONFERENCE OR COCKTAILS)  
**70 SEATED IN ROUNDS**  
**50 CLASSROOM**  
**1045 SQ. FT.**

This space is fully functional for business meetings with one ceiling projector and screen, a butler's pantry for easy service for your event, and window nooks for more intimate seating areas for breakout conversations.







# 6 SOUTH

**180 GUEST** (CONFERENCE OR COCKTAILS)  
**150 SEATED IN ROUNDS**  
**120 CLASSROOM**  
**1266 SQ FT**

Beautiful brick walls complete with two projectors and screens make this space great for anything from a conference to a reception style social event. With two window alcoves for flexible seating or mobile bars we can accommodate your group in historic style with elegant light wood flooring.



**2 NORTH**



**4 NORTH**





# COCKTAIL CLUB

**BASEMENT SPEAKEASY**  
**40 GUESTS MAX**  
**585 SQ. FT.**

An intimate 40-seat cocktail experience on the lowest level of the building. It showcases a black granite bar, brick archways, a spiral staircase, and an open ceiling to the floor above. It feels like a secret space that wants to be found out!



# PREFERRED PARTNERS

## CATERERS

**Corcoran Caterers**  
Melanie Davis  
melanie@corcorancaterers.com  
O: (301) 588-9200 | M: (202) 359-3721  
<http://corcorancaterers.com>

**Occasions Caterers**  
Wyatt McKenzie  
wmckenzie@occasionscaterers.com  
O: (202) 454-7838 | M: (202) 321-5555  
<http://www.occasionscaterers.com>

**K Signature Caterers**  
<https://www.signaturecaterers.com>

**Spilled Milk Catering**  
Amit Gulati  
amit@spilledmilkcatering.com  
O: (202) 525-6455 | M: (301) 237-3148  
<http://www.spilledmilkcatering.com>

**Susan Gage Caterers**  
Dan Rose  
drose@susangage.com  
O: (317) 725-8507 | M: (617) 256-8507  
<http://susangage.com>

**Timber Pizza Company/Call Your Mother**  
Chris Brady  
chris@timberpizza.com  
O: (571) 722-1257 | M: (716) 909-6737  
<http://timberpizza.com>  
<https://www.callyourmotherdeli.com>

**Well Dunn Catering**  
Cameron Doucette  
cdoucette@welldunn.com  
O: (202) 543-7878 | M: (202) 543-7878  
<http://www.welldunn.com>

**K Windows Catering**  
Debbie Smith  
debbie@catering.com  
O: (703) 752-9409 | M: (703) 928-8599  
<http://www.catering.com>

## EVENT PLANNER

**Corsair Creative**  
tracy@corsaircreative.com  
O: (571) 895-5795  
<http://corsaircreative.com>

**K = KOSHER CATERER**





# PREFERRED PARTNERS

## AUDIO/VISUAL

### Atmosphere Lighting

O: (301) 585-2100

<https://atmospherelighting.com>

### Dan Goldman

[party@dangoldmanevents.com](mailto:party@dangoldmanevents.com)

O: (202) 215-3655

<https://dangoldmanevents.com>

### Nomad Events

Matt Fisher

[mfisher@nomadevents.com](mailto:mfisher@nomadevents.com)

O: (703) 354-2939

<https://nomadevents.com>

### Pike Productions DC

Kathleen Kelley

[kathleen@pikeproductionsdc.com](mailto:kathleen@pikeproductionsdc.com)

O: (301) 813-9500 | M: (202) 792-3713

<https://pikeproductionsdc.com/>

## DECOR/FLORAL

### Design Foundry Events

Anne Senatore

[asenatore@avistaevents.com](mailto:asenatore@avistaevents.com)

M: (240) 462-3377

<https://www.foundrycrew.com>

### Revolution Event Design and Production

Erin Cermak

[cermake@gmail.com](mailto:cermake@gmail.com)

M: (410) 365-5367

<https://eventrevolution.com>

## VALET

### Atlantic Valet

Natnael Abraham

[nabraham@asgpark.com](mailto:nabraham@asgpark.com)

O: (202) 407-9555 | M: (202) 498-2152

<http://asgpark.com>

### MJ Valet

Michael Jasser

[mjasser@mjvalet.com](mailto:mjasser@mjvalet.com)

M: (202) 587-2745

<http://mjvalet.com>

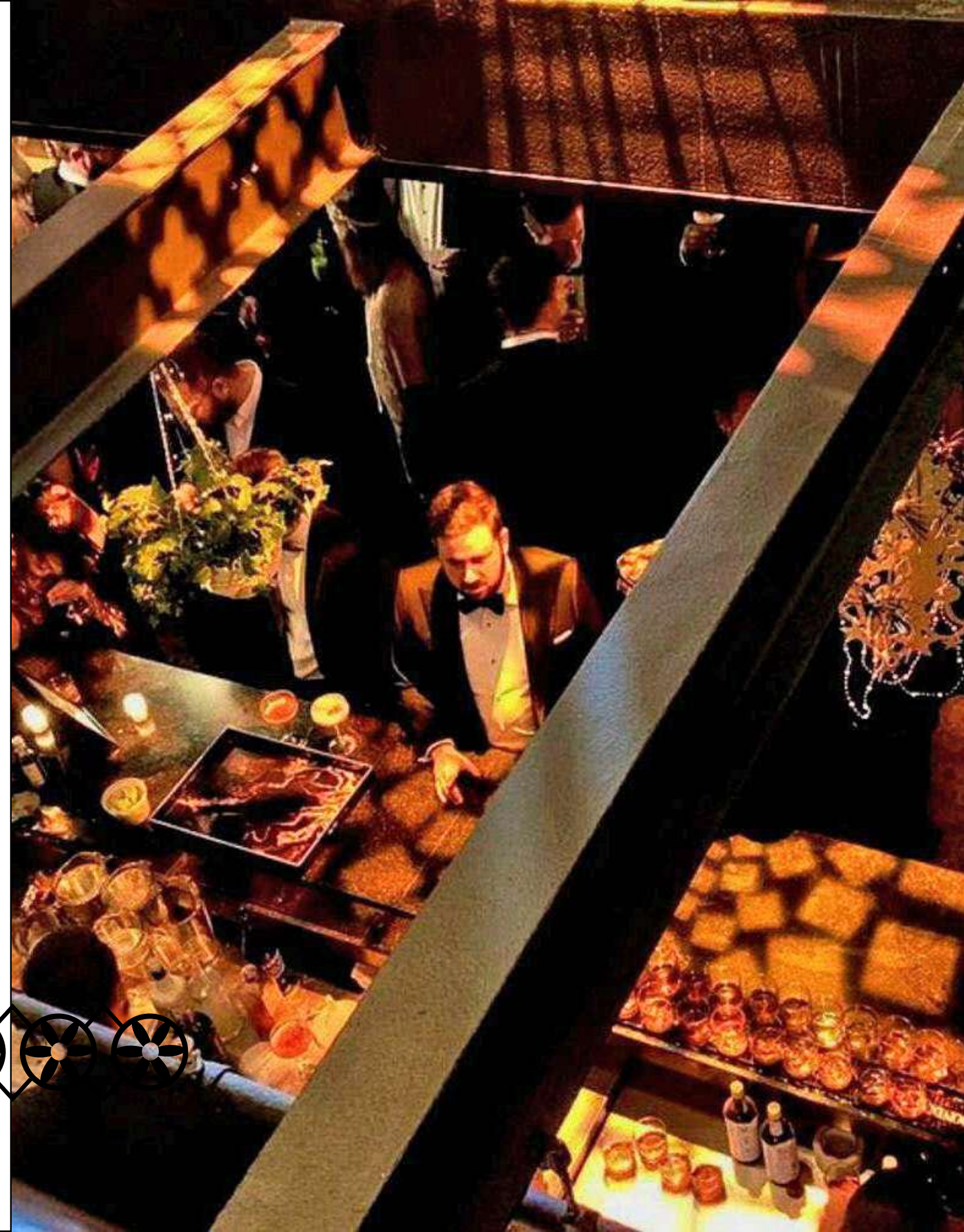
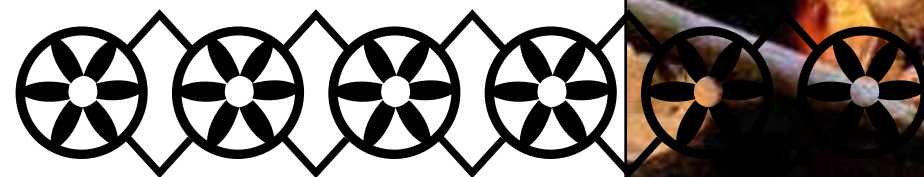
## INSURANCE

### Reese Yeatman Insurance

Tom Riley

[triley@reeseyeatman.com](mailto:triley@reeseyeatman.com)

(301) 657-9491





# PARKING NEARBY

## IN ORDER OF DISTANCE

**975 F Street Garage - ParkChirp**  
975 F St NW, Washington, DC 20004  
(202) 409-6618

**509 9th Street Garage - ParkChirp**  
509 9th St NW, Washington, DC 20004  
(202) 409-6618

**Atlantic Parking**  
610 9th St NW, Washington, DC 20004  
(202) 528-4221

**SP+ Parking**  
962 McGill Aly, Washington, DC 20004  
(202) 347-4338

**555 12th St NW Garage**  
560 22th St NW, Washington, DC 20004  
(202) 624-0840

**LAZ Parking 1101 Pennsylvania Ave NW Garage**  
1101 Pennsylvania Ave NW, Washington, DC 20004  
(443) 301-8272



Valet parking is available at our neighbor The Riggs Hotel. We can also contract Valet for you for your event at our location.

# HOTELS NEARBY

## IN ORDER OF DISTANCE

**The Riggs Washington DC**  
900 F St NW, Washington, DC 20004  
(202) 638-1800  
\$\$\$

**Kimpton Hotel Monaco Washington DC**  
700 F St NW, Washington, DC 20004  
(202) 628-7177  
\$\$\$

**Hotel Harrington**  
436 11th St NW, Washington, DC 20004  
(202) 628-8140  
\$

**Motto by Hilton Washington DC City Center**  
627 H St NW, Washington, DC 20001  
(202) 847-4444  
\$\$

**Waldorf Astoria Washington DC**  
1100 Pennsylvania Ave, Washington, DC 20004  
(202) 695-1100  
\$\$\$\$

**Eaton DC**  
1201 K St NW, Washington, DC 20005  
(202) 289-7600  
\$\$\$

**Washington Marriot at Metro Center**  
775 12th St NW, Washington, DC 20005  
(202) 737-2200

Our preferred Hotel partner, is The Riggs Hotel. It's located two doors away with an event room block package just for events at the National Union Building, ask your event coordinator for more information.

**Grand Hyatt Washington**  
1000 H St NW, Washington, DC 20001  
(202) 582-1234  
\$\$\$

**Hilton Garden Inn Washington DC Downtown**  
815 14th St NW, Washington, DC 20005  
(202) 783-7800  
\$\$

**Sofitel Washington DC Lafayette Square**  
806 15th St NW, Washington, DC 20005  
(202) 730-8800  
\$\$\$

**JW Marriott Washington DC**  
1331 Pennsylvania Ave NW  
Washington, DC 20004  
(202) 393-2000  
\$\$\$

**YOTEL Washington DC**  
415 New Jersey Ave NW  
Washington, DC 20001  
(202) 638-1616  
\$\$

