



# WEDDINGS

AT THE  
LOUISVILLE MARRIOTT DOWNTOWN



# YOUR DREAM WEDDING

Congratulations on your engagement! I am so excited for you to begin this exciting part of your life!

Being a Marriott Certified Wedding Planner, I am committed to making your wedding dreams come true with as little stress as possible. This is likely the first time you have planned an event this large and important, so I make it my goal to ensure you have all the information you need to make the best decisions and get everything you ever wanted.

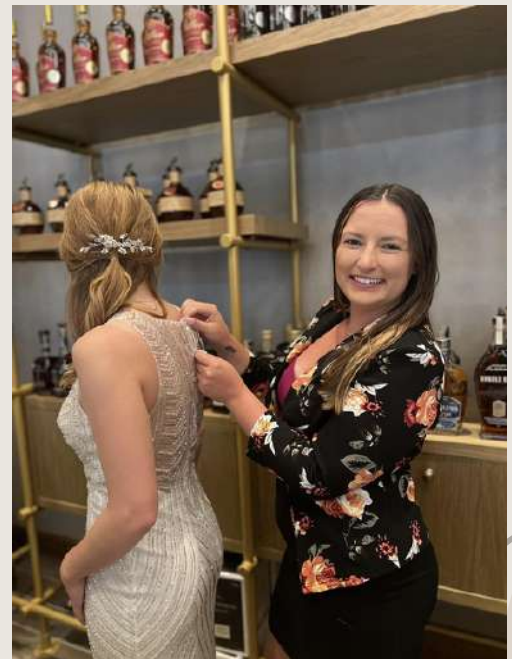
With every wedding, my whole heart is into planning your event that is true to you as a couple, down to every detail.

Cheers to planning an amazing event!

*- Gabrielle Evans*



Gabrielle Evans  
Senior Catering Sales Manager



# YOUR HOTEL

WHETHER A TRADITIONAL WEDDING OR A ONE-OF-A-KIND CELEBRATION, LOUISVILLE MARRIOTT DOWNTOWN WILL EXCEED EVERY EXPECTATION. FROM INSPIRING SPACES AND CREATIVE MENUS TO AN EXCEPTIONAL EVENTS TEAM AND A CURATED LIST OF PREFERRED VENDORS, WE OFFER EVERYTHING YOU NEED TO MAKE YOUR BIG DAY AN AFFAIR TO REMEMBER.





# OUR GIFT TO YOU

The Louisville Marriott Downtown sets a new standard in romantic elegance and dreams come true. When you choose the Louisville Marriott Downtown for your Wedding Reception Venue, you will be treated to the following complimentary amenities:

## **Planning:**

- Dedicated Marriott Certified Wedding Specialist
- Menu Tasting for up to 6 Guests

## **Sleeping Rooms:**

- Suite for the night before and night of the wedding
- Upgrade for two guest rooms at the group rate
- Discounted Guest Room Rate for Friends and Family

## **Set-up and Tear-Down:**

- Banquet Tables and Chairs
- White or Black Linen Napkins
- Votive Candles for Tables
- Classic White China Place Settings with Glass Stemware
- Polished Wooden Dance Floor
- Staging for Entertainment

## **Special Touches:**

- Getting Ready Rooms and Holding Rooms
- Bottle of Champagne for Wedding Party Toast
- Dedicated Event Concierge: Red Coat Service
- Marriott Rewards Events Points

# YOUR REHEARSAL

START YOUR WEDDING WEEKEND OFF WITH A POP. TOAST YOUR "I DOS" IN THE PERFECT SETTING AT THE LOUISVILLE MARRIOTT DOWNTOWN. WHETHER A SIT-DOWN DINNER OR A COCKTAIL RECEPTION, OUR PLANNERS WILL CREATE THE FAIRYTALE BEGINNING TO YOUR HAPPILY EVER AFTER.



**PORCH**  
KITCHEN & BAR  
LOUISVILLE



**MARRIOTT**  
LOUISVILLE  
DOWNTOWN



Contact your Event Manager for details on our flexible banquet space or  
Porch Kitchen & Bar's Private Dining options

# YOUR CEREMONY

WHETHER A MORE TRADITIONAL WALK DOWN THE AISLE OR A ONE OF A KIND CEREMONY CREATED BY YOU, CHOOSE LOUISVILLE MARRIOTT DOWNTOWN FOR THE PERFECT BACKDROP TO YOUR “I DOs.”



# YOUR CEREMONY

We offer spectacular ballrooms to make your wedding perfect. Space is available with the following options:

## **Ceremony Fee:**

Up to 100 Guests | \$750.00  
101 - 200 Guests | \$1,200.00  
201 - 300 Guests | \$1,750.00  
301 - 500 Guests | \$2,000.00  
500+ Guests | Call for Quote

## **Ceremony Fee Includes:**

Theatre Style Seating  
Riser with Stairs  
Water Stations in Foyer Area  
Tables for Gifts, Guestbooks, etc.  
Wedding Party Hospitality Room  
Rehearsal Space Week of Wedding



A taxable customary service charge (currently 25%) and KY sales tax (currently 6%) will be added to all pricing. Prices are subject to change.

# YOUR RECEPTION

EAT, DRINK AND CELEBRATE TO THE FULLEST AT THE LOUISVILLE MARRIOTT DOWNTOWN. NO MATTER YOUR PREFERENCES, WE WILL TAKE CARE OF EVERY DETAIL SO THAT YOU CAN TAKE CARE OF THE MEMORIES.





# YOUR RECEPTION

## **Marriott Ballroom:**

Located on the 2nd Floor

18,680 Square Feet of Event Space

11,065 Square Feet of Pre-Function Space

Newly Renovated & Premium Ballroom Space with 19 foot High Ceilings

Meeting Room Rental Waived with **\$30,000 Food & Beverage Minimum**



# YOUR RECEPTION

## Kentucky Ballroom:

Located on the 1st Floor

9,984 Square Feet of Event Space

4,263 Square Feet of Pre-Function Space

Holding/Getting Ready Rooms within 10 Feet of Reception Entrance

Meeting Room Rental Waived with **\$15,000 Food & Beverage Minimum**



# YOUR RECEPTION

## **Lily Package:**

\$150 | Person

### **FEATURES:**

- Selection of 3 Hors D 'Oeuvres, 2 pieces per person
- Two Course Curated Dinner Experience
  - Selection of Salad
  - Selection of Chicken and Vegetarian Entrée
- Four Hour House Beverage Package

### **ENHANCEMENTS:**

- Wine Table Service - Priced By the Bottle
- Additional Bar Hours - \$15 | hour
- Premium Bar Upgrade - \$10 | Person
- Champagne Toast for all Guests - \$4 | Person
- Additional Hors D 'Oeuvres - \$8 | Piece



A taxable customary service charge (currently 25%) and KY sales tax (currently 6%) will be added to all pricing. Prices are subject to change.

# YOUR RECEPTION

## **Julep Package:**

\$175 | Person

### **FEATURES:**

- Selection of 4 Hors D 'Oeuvres, 2 pieces per person
- Two Course Curated Dinner Experience
  - Selection of Salad
  - Selection of Chicken, Beef or Pork and Vegetarian Entrée
- Four Hour House Beverage Package
- Selection of "Specialty" Cocktail Add-On

### **ENHANCEMENTS:**

- Wine Table Service - Priced By the Bottle
- Additional Bar Hours - \$15 | hour
- Premium Bar Upgrade - \$10 | Person
- Champagne Toast for all Guests - \$4 | Person
- Additional Hors D 'Oeuvres - \$8 | Piece
- Duet Entrée Plate Upgrade - \$15 | Person



A taxable customary service charge (currently 25%) and KY sales tax (currently 6%) will be added to all pricing. Prices are subject to change.

# YOUR RECEPTION

## **Spire Package:**

\$225 | Person

### **FEATURES:**

- Selection of 5 Hors D'Oeuvres, 2 pieces per person
- Two Course Curated Dinner Experience
  - Selection of Salad
  - Selection of Chicken, Fish, Beef and Vegetarian Entrée
- Four Hour Premium Beverage Package
- Selection of "Specialty" Cocktail Add-On
- Wine Table Service with Dinner

### **ENHANCEMENTS:**

- Additional Bar Hours - \$15 | hour
- Champagne Toast for all Guests - \$4 | Person
- Additional Hors D'Oeuvres - \$8 | Piece
- Duet Entrée Plate Upgrade - \$15 | Person



A taxable customary service charge (currently 25%) and KY sales tax (currently 6%) will be added to all pricing. Prices are subject to change.



# YOUR RECEPTION

## Beverage Selections

### **Domestic Beer:**

- Budweiser
- Bud Light
- Miller Lite
- Coors Lite
- Michelob Ultra
- O'Doul's NA

### **Import Beer:**

- Amstel Light
- Corona Extra
- Heineken
- Stella Artois
- Dos Equis-Amber

### **Craft Beer:**

- Kentucky Ale
- Sam Adam's  
Boston Lager
- BBC Brewing APA
- Sierra Nevada  
Pale Ale

### **House Spirits:**

- Tito's Vodka
- Bacardi Rum
- Bombay White Label Gin
- Dewar's Scotch
- Maker's Mark Bourbon
- George Dickel Whiskey
- Jack Daniel's Whiskey
- Tres Generaciones Plata Tequila

### **Premium Spirits:**

- Grey Goose Vodka
- Captain Morgan Rum
- Tanqueray Gin
- Johnny Walker Black Scotch
- Woodford Reserve Bourbon
- Knob Creek Bourbon
- Jameson Whiskey
- Crown Royal Whisky
- Patron Silver Tequila

A taxable customary service charge (currently 25%) and KY sales tax (currently 6%) will be added to all pricing. Prices are subject to change.



# ADDITIONAL INFORMATION

## **Service Charge and Sales Tax**

A taxable 25% service charge and 6% Kentucky Sales Tax are added to all food and beverage, audio visual, and room rental pricing.

## **Outside Catering Policy**

To Ensure the Safety of your guests and to comply with Kentucky Board of Health Regulations, groups and individuals are not allowed to bring in food and beverage into the hotel. All food and beverage consumed in meeting spaces must be sold and provided by the Louisville Marriott Downtown.

## **Welcome Bag Deliveries**

If you choose to provide a welcome gift bag for your overnight guests, our team will happily assist in the delivery to guest rooms for a cost of \$10.00 per delivery.

## **Parking**

The Louisville Marriott Downtown offers on-site self and valet parking options for a charge of \$40.00-\$45.00 per day. The Hotel is connected via Skywalk to the Kentucky International Convention Center with off-site parking options available.

## **Marriott Bonvoy Events**

Earn up to 60,000 points per qualified event with Marriott Bonvoy Events. Elite Members earn more with Bonus Points.

A taxable customary service charge (currently 25%) and KY sales tax (currently 6%) will be added to all pricing. Prices are subject to change.



# SUGGESTED VENDORS

## Decorators / Rentals

### **Millennium Events & Florals**

- 502.618.2525
- [www.milleventsky.com](http://www.milleventsky.com)

### **Fifty Chairs**

- 502.957.9080
- [www.fiftychairs.com](http://www.fiftychairs.com)

### **Lux Aeir (Balloon Decor)**

- 502.627.0399
- [www.luxaeir.com](http://www.luxaeir.com)

## Floral Design

### **Boston Floral Couture**

- 502.618.2415
- [www.bostonflorals.com](http://www.bostonflorals.com)

### **Nanz & Kraft Florists**

- 502.897.6551
- [www.nanzandkraft.com](http://www.nanzandkraft.com)

## Music / Entertainment

### **Endless Summer Band**

- 317.340.8175
- [www.esbband.com](http://www.esbband.com)

### **Louisville Crashers**

- 502.939.8344
- [www.thecrashers.com](http://www.thecrashers.com)

### **Masters of Music**

- 502.266.5351
- [www.mastersofmusicdj.com](http://www.mastersofmusicdj.com)

## Photography / Videography

### **Lang Thomas Photography**

- 502.645.3502
- [www.langthomasphotography.com](http://www.langthomasphotography.com)

### **Antonio Pantoja Film & Photo**

- 502.235.1237
- [www.antoniopantoja.com](http://www.antoniopantoja.com)

A taxable customary service charge (currently 25%) and KY sales tax (currently 6%) will be added to all pricing. Prices are subject to change.





# SUGGESTED VENDORS

## Wedding Planners

### **ShaFox Weddings & Events**

- 502.749.2445
- [www.shafox.com](http://www.shafox.com)

### **A Thorough Fare, LLC**

- 502.417.4254
- [www.atfweddings.com](http://www.atfweddings.com)

## Salon Services

### **Joseph's Salon & Spa**

- 502.897.5369
- [www.josephssalon.com](http://www.josephssalon.com)

## Bridal Salons

### **House of K Boutique**

- 502.640.0049
- [www.houseofkboutique.com](http://www.houseofkboutique.com)

## Bakeries

### **Mert's Cakes**

- 502.244.6200
- [www.mertscakes.com](http://www.mertscakes.com)

### **JJ Bakes & Co**

- 606.226.3566
- [www.jjbakesandco.com](http://www.jjbakesandco.com)

### **Heitzman Traditional Bakery**

- 502-426-7736
- [www.heitzmanbakery.com](http://www.heitzmanbakery.com)

## Transportation

### **Miller Transportation (*Trolley Service*)**

- 502.368.5644
- [www.millertransportation.com](http://www.millertransportation.com)

### **Pegasus Global**

- 502.458.1862
- [www.takepegasuschauffeured.com](http://www.takepegasuschauffeured.com)

A taxable customary service charge (currently 25%) and KY sales tax (currently 6%) will be added to all pricing. Prices are subject to change.