



EARLY MOUNTAIN





YOUR WEDDING AT EARLY MOUNTAIN

WELCOME TO EARLY MOUNTAIN

pg. 5

OUR SPACES

Event Hall
Great Lawn
Historic Barns
Tasting Room
Guest Cottage
Wine Library + Lounge

pg. 6

OUR CATERING

pg. 19

YOUR EARLY MOUNTAIN WEDDING

Day-of Details
Amenities

pg. 20

FREQUENTLY ASKED QUESTIONS

pg. 22



Welcome to Early Mountain

Early Mountain Vineyards offers a stunning wedding venue in the foothills of the Blue Ridge Mountains in Madison, Virginia between Charlottesville and Washington D.C. With world-class wines, 305 acres of sweeping landscapes, and a stunning Event Hall with vaulted ceilings and dramatic fireplaces, Early Mountain sets the stage for an unforgettable day. We love hosting weddings and are so excited for you to experience the natural beauty and elegant warmth of our winery.

— The Early Mountain Team

Photography: (left) Paige Ryan; (above) Shannon Moffit, Rachel May; (previous) Meredith Sledge; (front cover) Aaron Watson

Event Spaces

Couples adore the unmatched versatility of our venue with an array of picturesque locales for your ceremony no matter the weather or season. The Early Mountain winery includes so many added touches and options to create the effortless wedding of your dreams!

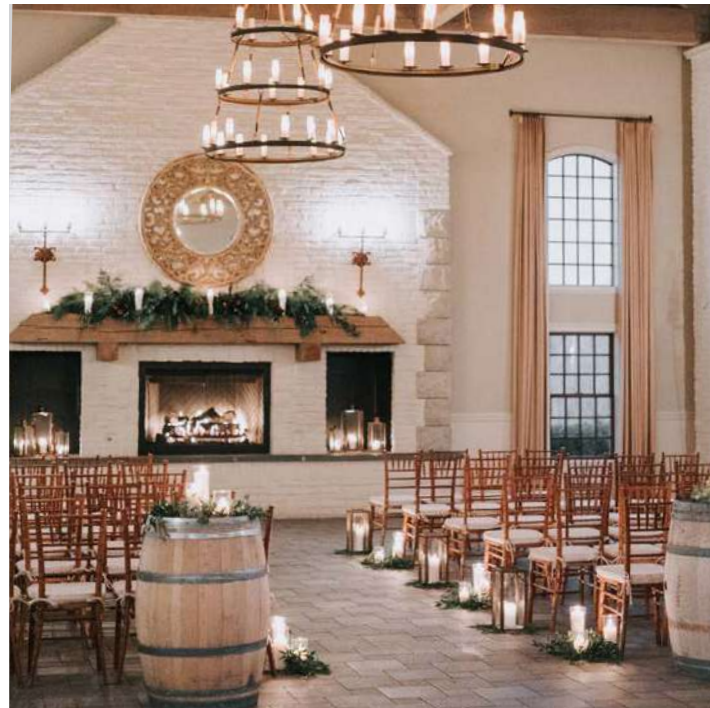


Photography: (top) Sylvia Kibler; (bottom) Amy Nicole; (opposite page, clockwise from top left) Abby Grace, Carrie Coleman, Megan Vaughan, Sylvia Kibler

Event Hall

The Event Hall accommodates up to 200 guests for your wine country reception and provides the perfect setting for your wedding, whether bedecked in greenery or enhanced with a few elegant flourishes.

Photography: (clockwise from top right) Erich McVey, Nicole Haun, Stephanie Messick; (opposite page) Vicki Grafton

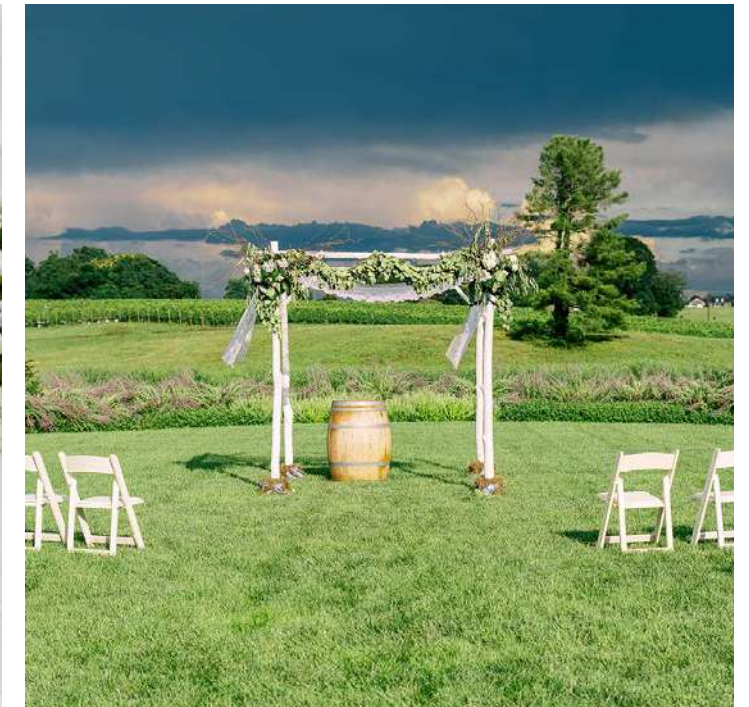




Great Lawn

The Event Hall opens out onto our Great Lawn which is ideal for guest counts up to 200 and offers stunning mountain views and spectacular sunsets.

Photography: (clockwise from top left)
Sidney Leigh, Rachel May, Ray Photography,
(opposite page) Aaron Watson





Historic Barns + Grounds

Our historic barns and manicured vineyards offer a naturalistic backdrop for first-looks and gorgeous portraits. The grounds stun with native grasses, limelight hydrangeas and show-stopping fall foliage.

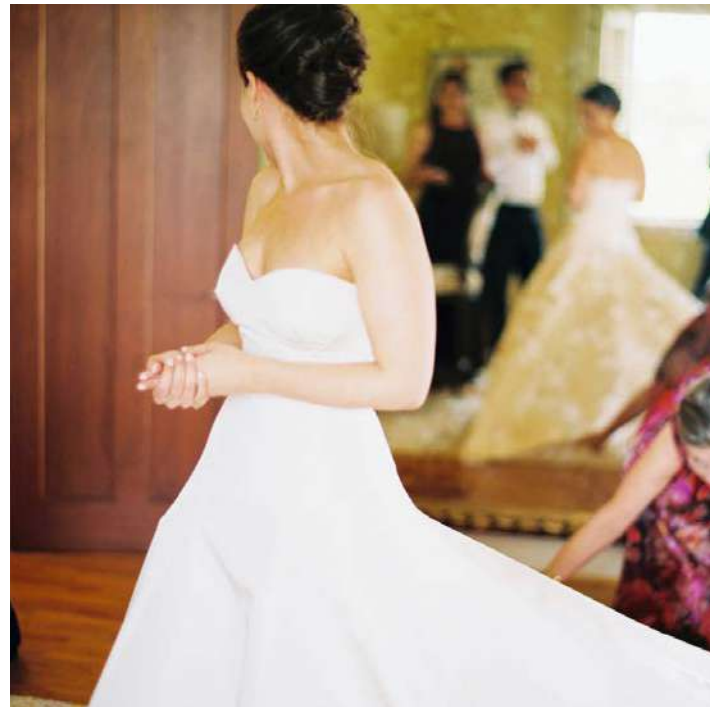
Photography: (clockwise from top left)
Amy Smith, Aaron Watson, Xiao Quili;
(opposite page) Hannah Louise



Guest Cottage

Our charming Guest Cottage, nestled in the grapevines, offers an expansive view of the Blue Ridge mountains and a luxurious location for you and your loved ones to prepare for the day to come — as well as a romantic first night for the newlyweds.

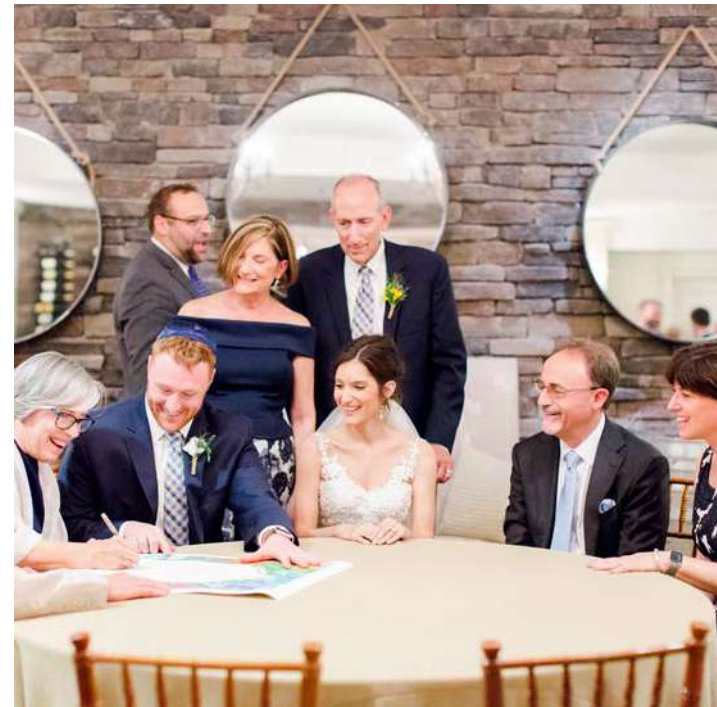
Photography: (clockwise from top right) Hannah Baldwin, Ahsley Hesse, Sylvia Kibler; (opposite page) Sidney Leigh



Wine Library + Lounge

The Wine Library and Lounge provide secluded chambers for members of the wedding party as they prepare for the ceremony. It is an ideal location for your elegant rehearsal dinner.

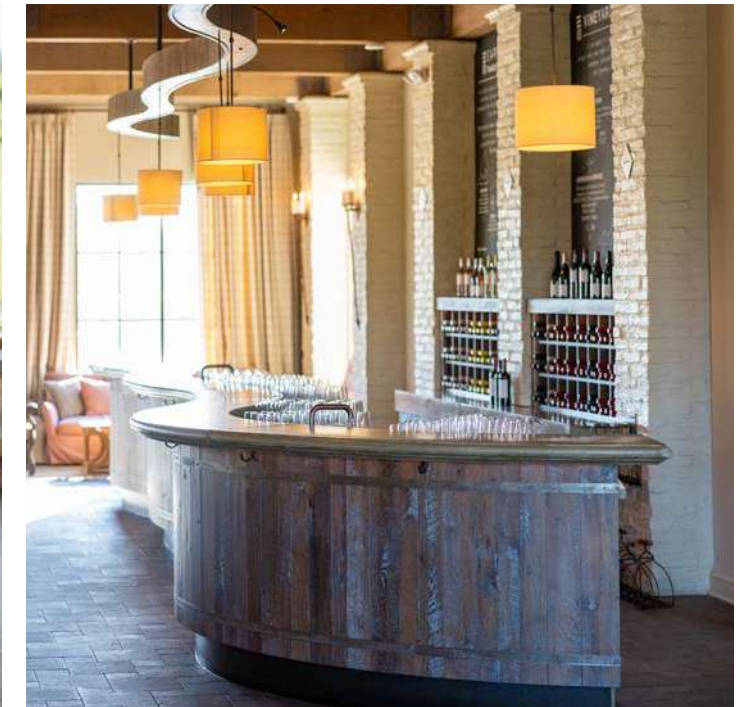
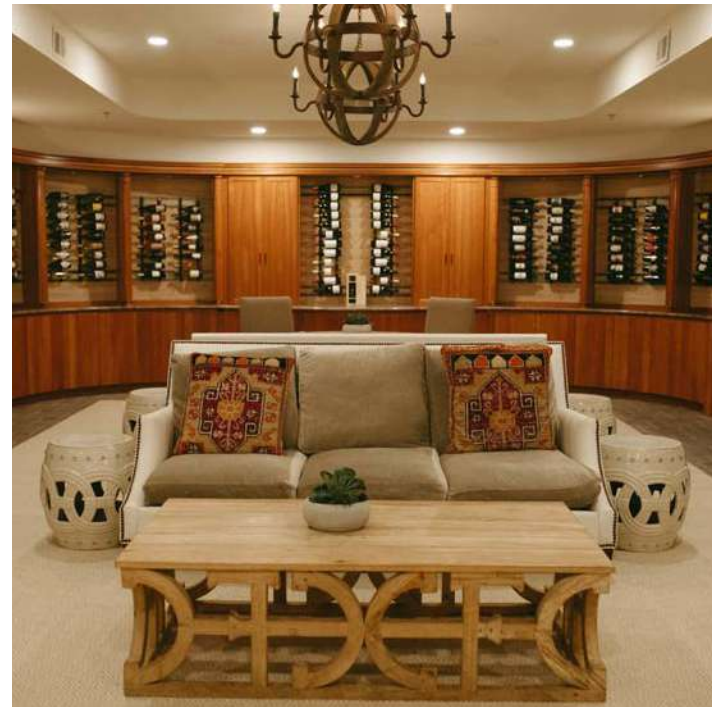
Photography: (clockwise from top right) Andrea Hubbell, Hannah Baldwin, Meredith Sledge



Tasting Room

A perfect place for your cocktail hour, mingle in our in our vaulted Tasting Room with an array of cocktail tables and lounge seating.

Photography: (clockwise from top left) Aaron Watson, Aaron Watson, Rachel May





Early Mountain Catering

Early Mountain's culinary team provides all-inclusive reception packages from our talented Executive Chef Tim Moore. Your choice of seasonal and locally sourced menu selections, flexible bar packages, and elegant table settings make planning your dream wedding effortless.

Photography: (clockwise from top left)
Tom McGovern, Alex C. Tenser, Tom McGovern;
(opposite page) Vicki Grafton



Amenities

VENUE

- Day-of coordination*
- Access to the Event Hall, Great Lawn, Terrace, and Gallery from 12 pm to 12 am.
- Use of the Library from 4 pm to 12 am.
- Use of Lounge from 2 pm to 12 pm.
- A private space in the guest cottage for attendants, which transforms into a romantic Honeymoon Suite for the newlyweds.
- Early Mountain has paved spots for up to ninety (90) cars and gravel lots for overflow.
- Early Mountain Vineyards' Venue Managers will handle your event with the utmost care, and ensure your day is unforgettable. (Upgraded options available.)

CUISINE & BEVERAGE

- Full menu tasting on-site at Early Mountain Vineyards.
- Hosted tasting to select your wedding wines.

DÉCOR + DESIGN

- Use of the fully furnished Tasting Room and patio as your cocktail hour location with included decor.
- Two hundred (200) white wooden chairs for an outdoor ceremony.
- Two hundred (200) maple Chiavari chairs and ivory-damask chair cushions for an indoor ceremony/reception.
- Twenty (20) 60" round tables, one (1) 36" round Sweetheart table, and six (6) 36" round cocktail tables.
- Luxurious patio furniture including two (2) patio tables, sectional couches, two (2) patio heaters and two (2) firepits. (Available seasonally.)
- Four (4) 8' hand-crafted farm tables.
- Decorative items including arbors, lanterns, and wine barrels.
- Bistro lights on the wedding terrace.
- Your tabletop, including choice of house linens, bone-white china, copper flatware, crystal wine glasses, and barware.

*Available with supplemental charge





Photography: Aaron Watson

Wedding Services Package

	HIGH SEASON April – November	WINTER SEASON December – March	HOLIDAY Memorial Day, July 4th, Labor Day, Thanksgiving, Christmas, New Year's Eve, New Year's Day Weekends
FRIDAY	\$11,000	\$9,500	\$11,000
SATURDAY	\$12,500	\$11,000	\$12,500
SUNDAY	\$11,000	\$9,500	\$11,000

FOOD & BEVERAGE

Early Mountain Catering Food & Beverage minimum: \$18,000
 State Sales Tax: 9.3% | Service Charge: 22%.

ONE-HOUR OPTIONAL EARLY CLOSE RENTAL FEES

	HIGH SEASON April – November	WINTER SEASON December – March	HOLIDAY Memorial Day, July 4th, Labor Day, Thanksgiving, Christmas, New Year's Eve, New Year's Day Weekends
FRIDAY - SUNDAY	\$3,500	\$3,000	\$3,500

DAY-OF COORDINATION SERVICES

Our day-of coordination services are for the couple who already has their vision and vendors figured out, but just needs a bit of assistance on the big day to keep everyone stress-free and enjoying the moment! **PRICING:** \$2,000

PRICING EFFECTIVE AS OF JUNE 2022



Frequently Asked Questions

HOW MANY PEOPLE MAY ATTEND MY WEDDING?

The maximum capacity of the venue is 200 guests for both the ceremony and reception. For guest counts of 75 or less, please inquire for our special "Petite Wedding" package.

WHAT TIME DO I HAVE ACCESS TO THE VENUE?

From 12 pm until 12 am, you and your Vendors will receive use of the Event Hall, Great Lawn, Terrace, Lounge, Gallery and Kitchen. You will have access to the Wine Library + Lounge from 4 pm to 12 am.

MAY I USE THE TASTING ROOM FOR COCKTAIL HOUR?

Yes. The Tasting Room is available one hour after close for your cocktail hour.

WHAT TIME DO I HAVE ACCESS TO THE GUEST COTTAGE?

Check-in is at 12 pm on the day of your Wedding and check-out is at 10 am the following morning

If you are interested in renting the Guest Cottage for additional nights, please check availability 90 days prior to your Wedding. The Guest Cottage rents for \$300/night. The address is 6331 Wolftown-Hood Road.

Photography: (top) Sylvia Kibler, (bottom) Rachel May

CAN WE SCHEDULE A MEETING WITH AN EARLY MOUNTAIN MANAGER?

Of course! All meetings at Early Mountain should be scheduled in advance to ensure the event space and staff are available.

Email ido@earlymountain.com to coordinate.

WHAT TIME CAN MY CEREMONY BEGIN?

Your ceremony may begin any time after 6:30 pm.

You may begin your ceremony up to one hour before these times for an additional fee of \$3,500 during peak season and \$3,000 during off-peak season. Doing so will close all of Early Mountain to the public one hour earlier than normal operating hours.

CAN I BRING IN AN OUTSIDE CATERER?

Due to our license, we require that you use Early Mountain catering for your event with the exception of your wedding cake. Executive Chef Tim Moore will work with you to create the menu of your dreams. Our venue fee includes your tabletop, including linens, china, flatware, wine glasses and barware.

MAY I SCHEDULE MY REHEARSAL AT EARLY MOUNTAIN?

Three months prior to your Wedding, please contact an Early Mountain Venue Manager to schedule your Rehearsal. You are allotted one hour of time to rehearse between 11 am and 2 pm. Ask about using our space for your Rehearsal Dinner!

WHAT IF IT RAINS ON MY WEDDING DAY?

Our space is versatile! In case of inclement weather, the Ceremony and Reception may be held in the Event Hall, and the Tasting Room is a perfect space for Cocktail Hour, based on the times noted above.

WHAT IF THERE IS A STORM OR POWER OUTAGE?

Early Mountain is fully equipped with a generator to ensure your event will continue as planned.

SHOULD I HIRE A WEDDING COORDINATOR?

Early Mountain provides day-of coordination on-property for your wedding for a supplemental charge. If you are interested in full-service planning, we are happy to provide a recommendation.

WHAT IS THE PAYMENT SCHEDULE?

- We require 50% of your venue fee up-front and 6-months in advance of your date the balance is due.
- After your menu tasting (approximately 4-months in advance of your date), 50% of your catering charges based on your estimated headcount is due.
- 14 days prior to your wedding, your final headcount and final payment is due.

DO I NEED TO PURCHASE EVENT INSURANCE?

Yes. 24-hour Event Insurance is required as coverage for you, your Vendors and your guests. Please refer to the Wedding Contract for more details.



WHAT FURNISHINGS ARE INCLUDED?

- **Outdoor Ceremonies on the Great Lawn**
Two Hundred (200) White Wooden Chairs
One (1) Wooden Ceremony Arbor
- **Cocktail Hour in the Tasting Room + Patio**
Tasting Room Zinc and Wood Tables
Lounge Furniture
Wood Burning Fireplace
Patio Heaters and Fireplace
- **Indoor Ceremonies + Receptions**
Two Hundred (200) Maple Chiavari Chairs,
Two Hundred (200) Ivory Damask
Chair Cushions
- **In General**
Twenty (20) 60" Round Tables,
One (1) 36" Round Table,
Four (4) 8' X 3.5' Maple Farm Tables,
Two (2) Mobile Bars,
Six (6) 36" Cocktail Tables

WHAT DECORATIONS ARE INCLUDED?

Eight (8) wine barrels, perfect for altar pieces, hors d'oeuvre stations or a cake table. Lanterns and candles. Tasting Room decor includes votive candles seasonally on each table, and fireplace lanterns.

DO YOU ALLOW DECORATIONS?

Candlelight is permitted with the use of a glass enclosure (i.e. votive, hurricane). No open flames, such as candelabras, are permitted. No décor that will leave permanent damage is allowed (i.e. nails, staples or tape). Use of decor involving birdseed, rice and glitter are not allowed. Lavender, rose petals, and bubbles are wonderful alternatives!



WILL THE FIREPLACES IN THE EVENT HALL BE LIT?

Absolutely! The gas fireplaces add a lovely ambiance and are used year-round. The lanterns in the adjacent fireboxes will also be lit throughout your Wedding. We will be happy to light the wood-burning fireplace in the Tasting Room if the temperature is less than 45 degrees.

CAN SPARKLERS BE USED AT THE SEND-OFF?

Yes. Sparkler wands are permitted outdoors on the sidewalks only. Receptacles must be provided for disposal. We cannot allow paper wish lanterns due to state regulations.

CAN I HIRE A BAND AND/OR A DJ?

Yes. We have three 20 AMP circuits in the Event Hall, which allow for multiple AV hook-ups. All sound must conclude by 12am midnight.

WHERE SHOULD GUESTS PARK?

Early Mountain has paved spots for up to 90 cars and gravel lots for overflow. Guests may leave their cars parked overnight. Due to our remote location and to ensure guests' safety, we recommend hiring a shuttle service.

CAN MY DOG PARTICIPATE IN OUR WEDDING?

Early Mountain welcomes leashed pets in our outside spaces! Dogs must be crated at all times if staying in the Guest Cottage.

DO YOU OFFER A DISCOUNT FOR EARLY MOUNTAIN WINES?

A discount on Early Mountain wines has been factored into our beverage packages. Many couples join the Early Mountain wine club and receive 15% off our wines to enjoy prior to and after their wedding.

WHAT ALCOHOL CAN BE SERVED AT MY WEDDING?

As the licensed caterer, Early Mountain holds a Virginia ABC mixed beverage catering license to serve your event with the appropriate alcoholic beverage needs. Due to liability and service standards, we cannot allow a client to provide their own alcohol. We have tiered beverage packages and are happy to work with you to customize to your needs

DO YOU OFFER A MILITARY DISCOUNT?

We are pleased to extend a 10% venue rental discount to active and retired military.

Photography: (top) Amy Smith, (bottom) Kristen Lynne



Photography: Amy Jackson; (opposite page, clockwise from top left) Amy Smith, Peyton Currey, Aaron Watson; (back cover) Sylvia Kibler



Let's start planning together!

CONTACT OUR DEDICATED EVENTS TEAM

ido@earlymountain.com
540.948.9005

for more details about scheduling a tour and hosting your wedding at Early Mountain Vineyards.



EARLY MOUNTAIN

6109 Wolfstown-Hood Road
Madison VA 22727

earlymountain.com