

# THE ROOF

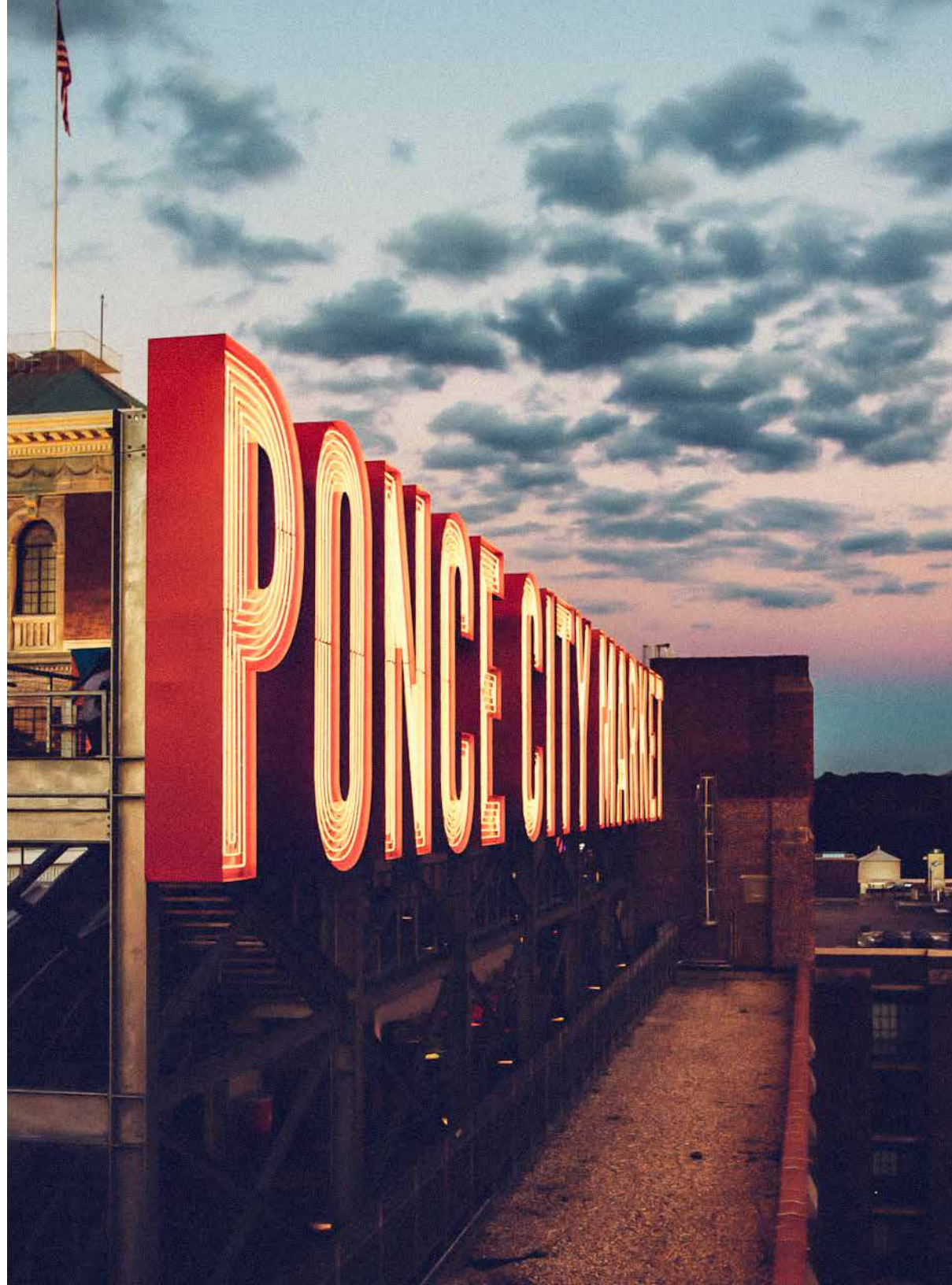
AT PONCE CITY MARKET



# THE IDEAL SETTING

## **THE ROOF at Ponce City Market**

is located in Atlanta's historic Old Fourth Ward neighborhood, adjacent to Midtown. The property is a short 5 minute drive to I-75 and I-85. Additionally the North Ave MARTA station is 1.5 miles away from the Ponce de Leon Ave. entrance. The building is directly accessible from the Atlanta BeltLine with bike valet and plentiful bike racks. Valet and self parking in enclosed parking deck available.





# HISTORY



**PONCE CITY MARKET** was not always what it is today. In the place of this modern landmark, there once was the Ponce De Leon Springs. The natural spring water was rumored to have the power to cure illnesses, and before long, Atlantans of the late 1800s were flocking to visit. The rich history of Atlanta and the Sears Roebuck building remains a distinguishing feature of today's Ponce City Market and is displayed throughout.

The Ponce de Leon Amusement Park from the early 1900s inspired the creation of Ponce City Market's crown jewel – **THE ROOF**. A deep sense of nostalgia and fun is present in every experience on the 80,000 square foot rooftop. **SKYLINE PARK** is an amusement park complete with boardwalk-style games, miniature golf,



delicious food, and hand-crafted cocktails. **9 MILE STATION**, our rooftop restaurant, is named for the railcar line that transported visitors to the original park and was known for its refreshing breezes. Our award winning bar & kitchen is home to one of the best views of Atlanta. And high above Ponce, rumor has it that the original spring, said to have healing powers, still flows in the tower at **12 COCKTAIL BAR**. Grab a seat, have a glass, and be refreshed.



# SKYLINE PARK



## Option A: Semi Private | Mini Golf and Games

**Sunday - Wednesday: \$30 / Person**

**Thursday - Saturday: \$35 / Person**

- Based on a 3 hour event
- Unlimited rounds of mini golf
- Unlimited midway games and rides
- Reserved section for your group
- Food and drink minimum of \$2,500
- 25 person minimum

## Option B: Private Event | Full Buyout

**\*Inquire for buyout pricing**

- Based on a 4 hour event
- Unlimited mini golf, games, and rides for all
- Food and drink is additional
- Capacity of 700 people

# EATS & SWEETS

**3 Snacks: \$15 / Person**

**2 Mains / 2 Snacks: \$25 / Person**

- Est. 4-5 piece/person + snacks

**3 Mains / 2 Snacks / 1  
Dessert: \$35 / Person**

- Est. 6-7 piece/person +  
snacks and dessert

**4 Mains / 2 Snacks / 2  
Desserts: \$45 / Person**

- Est. 8-9 piece/person +  
snacks and desserts

*\*2 hours of continuous food service*



# LIBATIONS

- Non-Alcoholic Drinks: \$5 / Person
- 2 Drink Tickets: \$17 / Person; 3 Drink Tickets: \$23 / Person
- Premium Open Bar: 2 hours – \$40 / Person; 3 hours – \$45 / Person
- Actual cost of drink tickets is based from consumption. Above price is based on the current average.

## FOR YOUR INFORMATION

All events require a \$2500 minimum and 25 guests minimum. Sales Tax and Liquor Tax are not included in pricing. 18% Service Charge will be added to food and beverage. 4% Administrative Fee will be added to grand total. Pricing and menu are subject to change. Dates are not held until 50% deposit is made.



# NINE MILE STATION



## DINNER

### **Monday - Thursday : \$1,000/Table/Hour**

#### Pricing Includes

- Venue Rental
- 3 Passed Apps (8 pieces/person)
- 3 Course Dinner - Plated (up to 30) or Family-Style (up to 50)
- Open Bar
- Taxes, Gratuity, and Administrative Fee

Max 12 people/table, Two Hour Minimum

### **Monday - Thursday: Full Buyout**

- Monday - Wednesday - \$16,875 minimum (\$15,000 F&B min + \$1,875 Venue Fee)
- Thursday - \$22,500 minimum (\$20,000 F&B min + \$2,500 Venue Fee)

Pricing is based on a 5pm start time

### **Friday - Sunday : Full Buyout Only**

- Friday - \$33,750 minimum (\$30,000 F&B min + \$3,750 Venue Fee)
- Saturday - \$45,000 minimum (\$40,000 F&B min + \$5,000 Venue Fee)
- Sunday - \$33,750 minimum (\$30,000 F&B min + \$3,750 Venue Fee)

Price is based on a 5pm start time



# DAYTIME MEETINGS

## Accommodations

## Capacity

## Full Day

(Up to 8 Hours)

## Half Day

(Up to 4 Hours)

Roebuck Room

25-120

\$2500

\$1350

Venue pricing based on Monday-Friday daytime event rentals. Does not include taxes and fees.

Daytime events must conclude by 5pm.





# FOOD

## Beverage Options

Unlimited Sodas and Water	\$5
Fresh Juice, Assorted Teas & Coffee	\$6
Both	\$8

## Breakfast Options

Continental Breakfast	\$10
Hot Breakfast	\$25
Snack Break	\$7

## Lunch Options

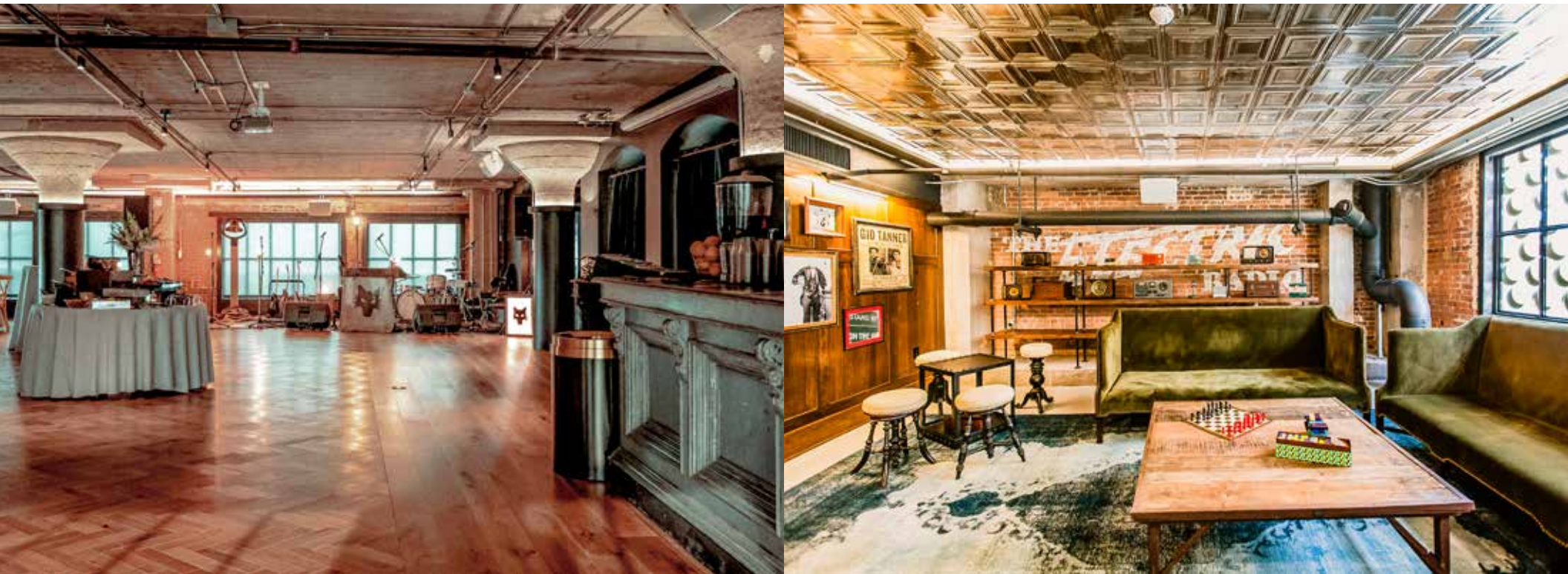
Cold Sandwich w/ Chips	\$14
Build Your Own Sandwich	\$14
Hot Lunch Buffet	\$40

# SOCIAL EVENINGS

	<b>Sun</b>	<b>Mon</b>	<b>TUE</b>	<b>WED</b>	<b>THU</b>	<b>FRI</b>	<b>SAT</b>
Roebuck Room	\$2500	\$2500	\$2500	\$2500	\$2500	\$3000	\$3500
Parlour	\$3000	\$2500	\$2500	\$2500	\$3500	\$4000	\$4500

\*Venue pricing based on an event up to 4 hours. Evening Rentals include a Food & Beverage Minimum of \$2500 on Sunday-Thursday and \$3,500 on Friday and Saturday. Does not include taxes and fees.

\*\*See Rooftop Terrace for Evening Food Options and Bar Packages.





# PRICING

Reserve your date now. Events at the Rooftop Terrace book up quickly and vary by day of the week.

**SUN**

**MON**

**TUES**

**WED**

**THU**

**FRI**

**SAT**

**\$4,000**

**\$3,000**

**\$3,000**

**\$4,000**

**\$5,000**

**\$5,000**

**\$8,500**

\*An event is not guaranteed until approved and deposit is received.



# PASSED & STATIONARY

## Option 1

- \$38 Per Person
- 4 Passed Apps (12 pieces/person)

## Option 2

- \$48 Per Person
- 6 Passed Apps (18 pieces/person)

\*One station of Clients Choice.

# DINNER

## Option 1

- \$50 Per Person
- 3 Course Meal
- Buffet Dinner or Family Style Dinner

## Option 2

- \$60 Per Person
- Choice of 3 Entrees
- Buffet Dinner or Family Style Dinner

\*Note: Family Style Dinners are only offered for guest counts up to 60 persons.

Add a reception with any option:

- \$20 per person
- 4 Passed Hors D'ouvres for 60 minutes



# LIBATIONS

Above items are a representation of styles and brands we use. Actual items, such as specific beer, liquor, and wine is subject to change based on seasonality and availability. For Custom Consumption Bar options, inquire with your Slater Hospitality Events representative. Gold and Platinum packages include soft drinks, mixers, ice, water, and one bartender per 50 guests. Champagne toast is available to add to any package for \$5 per person. 18% gratuity, 11.9% liquor tax, 8.9% sales tax, & 4% admin fee will be added.

## SILVER

**\$28 person | 3 hrs**  
**\$37 person | 4 hrs**

### BEER

- Creature Comforts Tropicalia
- Creature Comforts Classic City Lager
- Monday Night Drafty Kilt
- Highland Gaelic Amber Ale
- Witterkerke Belgian Wheat Ale
- Atlanta Hard Cider

### WINE

- Maggio - California
- Pinot Noir
- Sauvignon Blanc
- Cabernet
- Chardonnay
- La Vieille Ferme - France Rosé
- Jean Louis Blanc de Blanc - Sparkling Wine

## GOLD

**\$38 person | 3 hrs**  
**\$50 person | 4 hrs**

### BEER

- Includes all beers listed

### WINE

- Maggio - California
- Pinot Noir
- Sauvignon Blanc
- Cabernet
- Chardonnay
- La Vieille Ferme - France Rosé
- Jean Louis Blanc de Blanc - Sparkling Wine

### LIQUOR

- Belvedere Vodka
- Roku Gin
- Plantation 3 Star Rum
- Espolòn Tequila
- Naked Grouse Scotch
- Jim Beam Whiskey

## PLATINUM

**\$47 person | 3 hrs**  
**\$62 person | 4 hrs**

### BEER

- Includes all beers listed

### WINE

- Gio Pinot Grigio
- Albert Bichot Macon-Villages Chardonnay
- Manu Sauvignon Blanc
- Villa des Anges Rosé
- Broadside Cabernet Sauvignon
- Bernier Pinot Noir
- Adaras Aldea Red Blend

### LIQUOR

- Belvedere Vodka
- Roku Gin
- Plantation Rum
- Espolòn Tequila
- Naked Grouse Scotch
- Maker's Mark Bourbon



THE  
ROOF

AT PONCE CITY MARKET

IT'S WHAT'S UP.

**CONTACT** Events Team | [eventsteam@slaterhospitality.com](mailto:eventsteam@slaterhospitality.com) | 678.240.8942