

StudioBell

National
Music
Centre

Centre
National
de Musique



STUDIO BELL RENTAL PACKAGES & SPACES

Our Mission:

To give Canada a place that amplifies the love, sharing, and understanding of music.

Our Vision:

To be a national catalyst for discovery, innovation, and renewal through music.



About NMC

The National Music Centre (NMC), a registered charity is a national catalyst for discovery, innovation, and renewal through music. In our home at Studio Bell—designed by Brad Cloepfil of Allied Works Architecture—NMC preserves and celebrates Canada’s music story, and inspires a new generation of music lovers.

Our Programs

Programming at NMC is innovative, diverse, inclusive, and collaborative. NMC reaches music lovers through programs and exhibitions, including a wide demographic of people from children to professional musicians. NMC delivers programming in four streams: education, exhibitions, incubation, and performance.

Our programs are designed to:

- Provide original and inspiring experiences for all ages.
- Create access to NMC’s exceptional collection.
- Draw on NMC’s rich partnerships, at the regional, national and international levels.
- Provide creative opportunities for musicians, researchers and technicians.

Our Collection

NMC collects artifacts that represent the history of music technology and tells the story of music in Canada. Our collection philosophy is based on accessibility, which brings our collections to life and invites the exploration of sound and history to create new music. Our collection is comprised of more than 2,000 pieces, and is on display to the public and available to Artists in Residence.

Our Exhibitions

Music festivals are the inspiration behind our exhibitions, which merge technology and storytelling to create an immersive and exciting visitor experience. Curiosity drives visitors to explore the sounds, sights, and interactive activities pouring out of 22 individual exhibition stages, encouraging them to engage in an ever-evolving discussion around music in Canada.

About Studio Bell

Studio Bell opened in Calgary's East Village in July 2016 and represents an exciting partnership between NMC and Bell, Canada's largest communications company. This partnership supports NMC's vision to connect with music lovers across Canada and to create an international hub for music and technology. Studio Bell is home to the National Music Centre, a national cultural organization devoted to amplifying a love, sharing, and understanding of music.

What's Inside Studio Bell?

- Five floors of interactive exhibits
- 272-seat performance hall and multiple reception areas
- The NMC Cafe and Gift Shop
- CKUA Radio
- Classrooms
- Recording Studios

NMC Exhibitions Features

- Home of the Canadian Music Hall of Fame, the Canadian Country Music Hall of Fame Collection, the Canadian Songwriters Hall of Fame, and the ADISQ Hall of Fame
- Artifact conservation and restoration workshops
- Artist in Residence program for Canadian and international artists and technicians
- Incorporation of the famed King Eddy Hotel as a restaurant and live music venue
- Backstage Pass tours of three recording studios, including the Rolling Stones Mobile Recording Studio



Facility Areas

For more information or booking inquiries, please call 403-476-1663 or email rentals@nmc.ca.

ROOM	CAPACITY			
	Dinner	Standing Reception	Meeting / Classroom	Theatre
STUDIO BELL				
Canada Music Square	75	200	-	125
Performance Hall	160	250	-	272
Soundscape Gallery	50	100	-	-
East Village Skybridge	100	150	-	75
KING EDDY				
Terrace Commons	25	60	25	-
Rooftop Patio	100	190	-	-
ROOM	Boardroom	Standing	Pods (4/pod)	Classroom
MEETING ROOMS				
Prairie Room	12	-	-	-
North Canada Room	15	20	16	14
Central Canada Room	15	25	16	12
North & Central Canada Rooms	15/30*	45	25	24

* Capacity and rates vary based on configuration, see individual room page for more information.

- Additional costs may apply for Tech services, Event Staff, Ushers and Box Office staff, Security and Cleaning. Refer to Staff and Resource rates for more information.
- Prairie, North and Central Canada Rooms feature complimentary plug and play technology.
- All rates subject to change without notice.
- 25% NFP discount available to qualified agencies. Proof of charitable status is required

Performance Hall

Level 2 East Block

3, 300 ft • 75.4' x 44.5'

The Performance Hall is the centerpiece of Studio Bell. With fully retractable seats and an acoustic wall that can be opened or closed, the Performance Hall offers flexibility for a variety of events. Host a private reception or seminar, screen a film, or dance the night away to your favourite local band or DJ.

Packages

All Performance Hall packages include:

- Event Host, Event Tech, Security, and Cleaning Staff
- Applicable SOCAN fees
- Customized lighting
- Piped-in background music
- Two NMC Tech walk-throughs (post-contract signing)
- Can be combined with Soundscapes or Canada Music Square for an additional fee

8 hour rental Seated Dinner (160 ppl) or Reception (250 ppl)	\$8,760.00
12 hour rental Seated Dinner (160 ppl) or Reception (250 ppl)	\$13,480.00
Theatre Seating 8 hour rental (272 ppl)	\$8,560.00
Theatre Seating 12 hour rental (272 ppl)	\$12,950.00

- Evening events start after 5:00 pm
- Events with a technical component or live music require a minimum two-hour set up
- Additional costs may apply for Tech services, Event Staff, Ushers and Box Office staff, Security and Cleaning. Refer to Staff and Resource rates for more information
- 25% NFP discount available to qualified agencies. Proof of charitable status is required
- All rates subject to change without notice

- A** Made in Canada
- B** Soundscapes
- C** Trailblazers
- D** Performance Hall
- E** Where Music Lives
- II** Electrical outlets

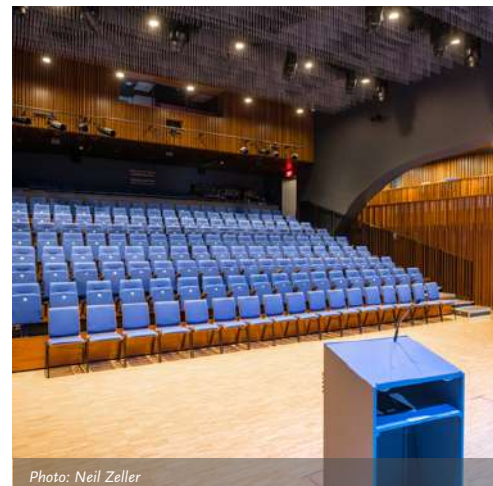
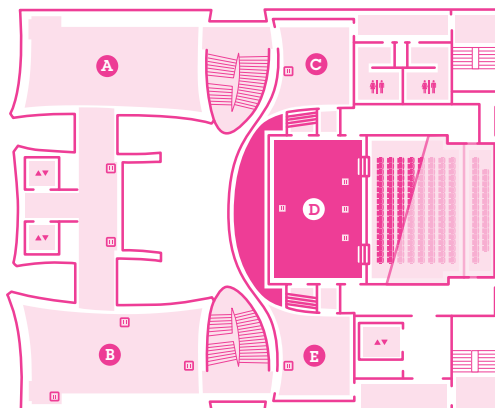


Photo: Neil Zeller



Photo: Neil Zeller



Photo: Neil Zeller

Soundscapes Gallery

Level 2 East Block

1, 230 sq ft • 51' x 24.2'

The Soundscapes Gallery features an award winning audio-visual installation showcasing the breadth of Canadian Music from coast to coast to coast. An ideal setting for an intimate dinner or reception space.

Package

Soundscape packages include:

- Event Host, Event Tech, Security, and Cleaning Staff
- Access to 2nd floor galleries
- Applicable SOCAN fees
- Background Music
- One NMC Tech walk-through (post-contract signing)

6 hour rental Reception (100 ppl)	\$2,950.00
---	------------

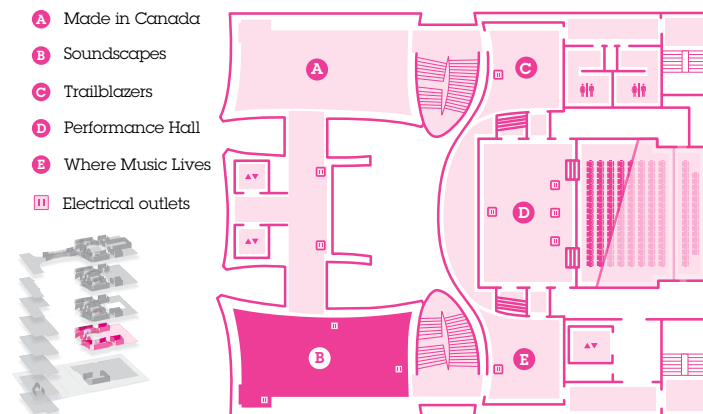
- Evening events start after 5:00 pm
- Rates are based on a six-hour booking (including load-in and load-out time)
- Additional costs may apply for Tech services, Event Staff, Ushers and Box Office staff, Security and Cleaning. Refer to Staff and Resource rates for more information
- 25% NFP discount available to qualified agencies. Proof of charitable status is required
- All rates subject to change without notice



Photo: Brenna Pladsen



Photo: Brandon Wallis



East Village Skybridge

Level 5 East Block

1,700 sq ft • 83.6' x 20.8'

The East Village Skybridge offers one-of-a-kind views south toward the Stampede grounds and north into the east village and beyond. This open space is perfect for evening receptions or for an intimate dinner. It can also be transformed into a concert venue and is great for dance parties.

Packages

All EV Skybridge packages include:

- Event Host, Event Tech, Security, and Cleaning Staff
- Access to 5th floor galleries
- Applicable SOCAN fees
- Piped-in background music
- One NMC Tech walk-through (post-contract signing)

6 hour rental Seated Dinner (100 ppl) or Reception (150 ppl)	\$4,010.00
8 hour rental Seated Dinner (100 ppl) or Reception (150 ppl)	\$5,430.00
12 hour rental Seated Dinner (100 ppl) or Reception (150 ppl)	\$8,480.00

- Events start after 5:00 pm
- Events with a technical component require a minimum two-hour set up
- Additional costs may apply for Tech services, Event Staff, Ushers and Box Office staff, Security and Cleaning. Refer to Staff and Resource rates for more information
- 25% NFP discount available to qualified agencies. Proof of charitable status is required
- All rates subject to change without notice

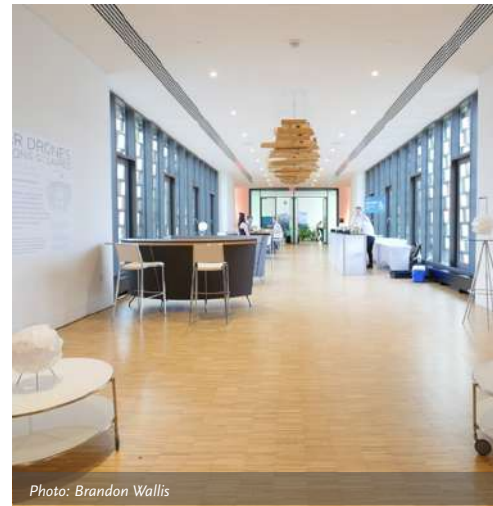


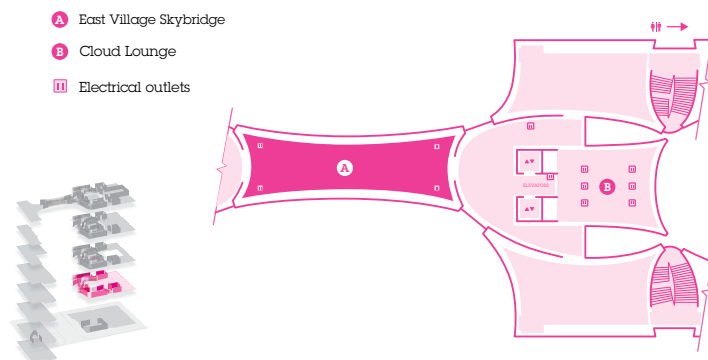
Photo: Brandon Wallis



Photo: Brenna Pladsen



Photo: Neil Zeller



Studio Bell • Full Building

Level 1 to 5 East Block

22,000 sq. ft

Studio Bell is a spectacular and memorable venue for large scale events. Guests will be able to take in the awe-inspiring architecture from every angle and explore the galleries as they travel between the Canada Music Square, the Performance Hall, and the East Village Skybridge.

Package

Full building rental includes:

- Event Host, Event Tech, Security, and Cleaning Staff
- Full building access (galleries level 1-5 and event spaces)
- Applicable SOCAN fees
- Customized lighting
- Piped-in background music
- Microtile
- Up to three NMC Tech walk-throughs (post-contract signing)

<p>12 hour rental Reception (1,500 ppl)</p>	<p>\$40,000.00</p>
--	--------------------

- Evening events start after 5:00 pm
- Events with a technical component require a minimum two-hour set up
- Additional costs may apply for Tech services, Event Staff, Ushers and Box Office staff, Security and Cleaning. Refer to Staff and Resource rates for more information
- 25% NFP discount available to qualified agencies. Proof of charitable status is required
- All rates subject to change without notice



Photo: Brenna Pladsen



Photo: Brenna Pladsen

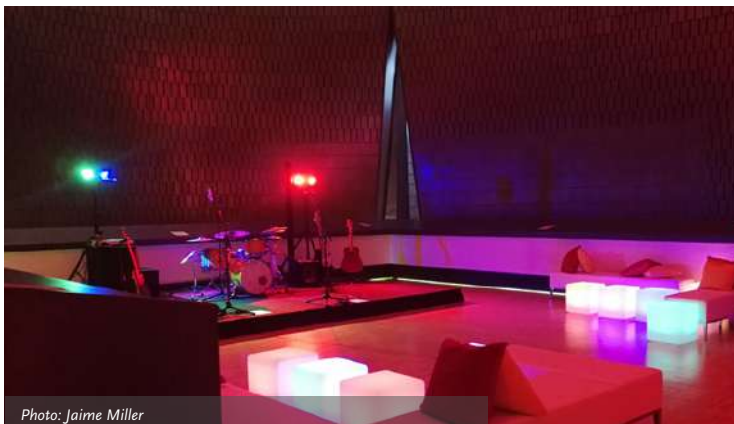


Photo: Jaime Miller

Prairie Room

Level 3 West Block

430 sq ft • 27' x 16'

The Prairie Room offers stately details and “plug-and-play” technology with full web conferencing capabilities. It is the perfect meeting space for groups of up to 12.

Capacity

Boardroom	12
-----------	----

Rates

(3 hour min.)

Daily	\$100/hour
-------	------------

- Includes one Event Host
- Additional costs may apply for Tech services, Event Staff, Security and Cleaning. Refer to Staff and Resource rates for more information
- Features complimentary wi-fi and plug and play technology
- 25% NFP discount available to qualified agencies. Proof of charitable status is required
- All rates subject to change without notice



Photo: Gabriella Gut



Photo: Neil Zeller

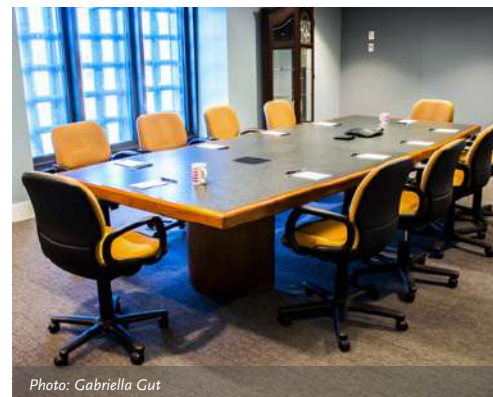
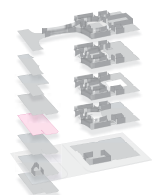


Photo: Gabriella Gut



Central Canada Room

Level 3 West Block

Central Canada Room 390 sq ft • 26' x 15'

This room offers the “plug-and-play” technology. Central Canada is perfect for board meetings up to 15, and can be joined with North Canada Room for a classroom style configuration, or break-out group sessions for up to 25 participants.

Capacity

Boardroom	15
Standing Reception	25
Pods (4 guests/pod)	16
Classroom	12

Rates

(3 hour min.)

Daily	\$100/hour
Central + North Rooms	\$190/hour

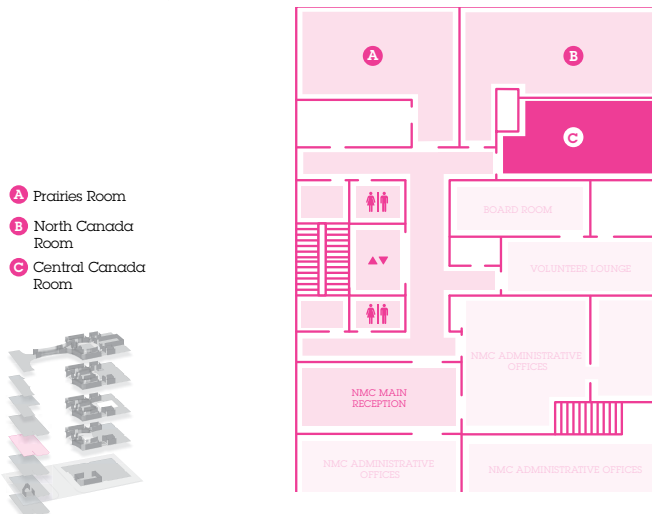
- Includes one Event Host
- Additional costs may apply for Tech services, Event Staff, Security and Cleaning. Refer to Staff and Resource rates for more information
- Features complimentary wi-fi and plug and play technology
- 25% NFP discount available to qualified agencies. Proof of charitable status is required
- All rates subject to change without notice



Photo: Gabriella Gut



Photo: Gabriella Gut



North Canada Room

Level 3 West Block

North Canada Room 580 sq ft • 35.3' x 16.5'

This room offers “plug-and-play” technology. North Canada is perfect for tel-conferences, and can be joined with Central Canada Room for a classroom style configuration, or break-out group sessions for up to 25 participants.

Capacity

Boardroom	15
Standing Reception	20
Pods (4 guests/pod)	16
Classroom	14

Rates

(3 hour min.)

Daily	\$100/hour
North + Central Rooms	\$190/hour

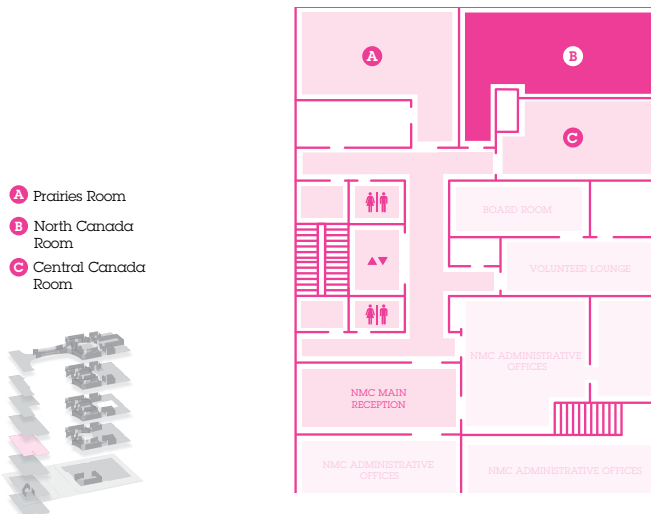
- Includes one Event Host
- Additional costs may apply for Tech services, Event Staff, Security and Cleaning. Refer to Staff and Resource rates for more information
- Features complimentary wi-fi and plug and play technology
- 25% NFP discount available to qualified agencies. Proof of charitable status is required
- All rates subject to change without notice



Photo: Neil Zeller



Photo: Gabriella Gut



North Canada & Central Canada Rooms

Level 3 West Block

North Canada Room 580 sq ft • 35.3' x 16.5' | Central Canada Room 390 sq ft • 26' x 15'

Both rooms offer “plug-and-play” technology. The rooms can be joined together for a classroom style configuration, or break-out group sessions for up to 25 participants.

Capacity

Boardroom	15/30*
Standing Reception	45
Pods (4 guests/pod)	25
Classroom	24

Rates

(3 hour min.)

Combined as one room	\$190/hour
----------------------	------------

- Includes one Event Host
- Additional costs may apply for Tech services, Event Staff, Security and Cleaning. Refer to Staff and Resource rates for more information
- Features complimentary wi-fi and plug and play technology
- 25% NFP discount available to qualified agencies. Proof of charitable status is required
- All rates subject to change without notice



NMC Preferred Caterers

Concept Catering

Rachel Yu
Operations Manager
rachel@foreignconcept.ca
403.999.0586

Hyatt

Rebecca Norris
Associate Director of Events
rebecca.norris@hyatt.com
403.537.4483

Fairmont Palliser

Michele Tyrrell
Director of Conference Services & Catering
michele.tyrrell@fairmont.com
403.260.1263

King Eddy

Ryan McLeish
Restaurant Manager
ryan.mcleish@kingeddy.ca
403.829.6016

Gather Catering

Ashley Zarb
Catering Supervisor
info@gathercatering.ca
403.454.8933 ext 3

Simply Elegant

Peter Schwarz
Director of Food & Beverage
catering@secorp.ca
403.242.0598

Hotel Arts

Kimberly Dobbins
Associate Director of Events &
Conference Services
kdobbins@hotelarts.ca
403.206.9563

Staff and Resource Rates

Staffing*

ADDITIONAL STAFF	HOURLY RATE (min 3 hours)
Event Host	\$32
Event Staff	\$29
Tech Lead	\$45
Tech Staff	\$35
Lighting Tech	\$45
Collections Staff	\$75
Box Office	\$29
Kimball Organist	\$250 base rate
Event Interpreters	\$125/tour
Security	\$40
Cleaners	\$40

Additional Resources*

S/B ITEM	RATE
Grand Piano (moving and tuning)	\$250
Performance Hall seat retraction	\$500
Performance Hall Air Wall	\$500
Performance Hall projector and screen	\$600
Performance Hall smart lectern	\$300
Simple lectern	\$100
Secure wired network access	\$300
Secure wi-fi network access	\$200
100 Amp 3 phase - 208 volt access	\$500
Mobile Audio Cart - Basic tech (mic, mic stand, 2 small speakers, music stand)	\$250
Uplighting LED (PARCAN)	\$20/light
52" flat screen TV	\$300
60" flat screen TV	\$350
Tech Walk-through	\$135/hour

Box Office*

OPTION 1: NMC BOX OFFICE	
Set-up fee	\$200
per ticket surcharge	\$4
OPTION 2: THIRD PARTY TICKET AGENT	
per ticket surcharge	\$4

Additional Fees

- Additional SOCAN Tariffs may apply
- Extra charges may be added for additional equipment rentals. Additional rentals will be added on a per event basis and are dependent upon the size and complexity of the event
- All rates subject to change without notice

NMC Venue Rentals – FAQ

VENUE ACCESS

Access to the venue is given no earlier than the start time stipulated on the contract. Please factor in adequate time for set-up, sound checks, catering, rehearsals, etc., when choosing your contracted start and end time. Additional time is dependent on availability and subject to additional fees.

DO WE HAVE ACCESS TO ALL OF STUDIO BELL?

No, venue access only applies to the floor of the space booked. For example, booking the Performance Hall provides your guests with full access to the 2nd floor but does not allow access to the 3rd, 4th, and 5th floors. Booking the Skybridge will provide your guests with full access to the 5th floor but does not allow access to the 2nd, 3rd, and 4th floors. Access to galleries on venue floors is subject to availability.

Tours of the collection are also available. You can receive more information from NMC's Sales and Event Specialist at the time of your booking.

DO YOU HAVE A P.A. SYSTEM?

Yes, the Performance Hall has a built in P.A. system. Tech services can be provided for all event spaces in Studio Bell. Additional P.A. rentals may apply.

DO YOU PROVIDE CATERING?

No, NMC does not provide catering but works closely with preferred catering partners. Please refer to the Studio Bell rentals package for a list of our preferred catering partners.

An Alberta liquor license is required for all events serving alcohol. A liquor license can be provided by any of the preferred catering partners.

IS THERE PARKING AVAILABLE?

Studio Bell does not have on-site parking, but ample parking is available throughout the East Village.

DO YOU REQUIRE A DEPOSIT?

Yes, we require a 50% deposit once the contract has been signed to confirm the booking.

WHEN IS FULL PAYMENT DUE?

The full balance is due on the date of your event or no more than 30 days following the scheduled event date. Interest rates apply to all overdue accounts. Payment can be made by Electronic Funds Transfer, Visa, MasterCard, cash or cheque.

DOES NMC PROVIDE EVENT SET-UP OR DÉCOR (TABLES, CHAIRS, ETC.)?

Depending on the event size, furniture and decor set-up can be managed by NMC and/or the preferred caterer.

Please note that as a museum housing hundreds of sensitive artifacts, we have extremely strict décor restrictions. Restrictions include (but are not limited to) no open flames, no balloons, no glitter, no confetti, etc. Please ask your NMC Sales and Event Specialist for a list of restrictions.

DOES NMC PROVIDE ENTERTAINMENT?

No, NMC does not provide entertainment, but we are more than happy to provide entertainment agency recommendations who will help you find the right entertainment for your event.

IS EVENT SECURITY MANDATORY?

Yes, all events hosted at Studio Bell require NMC event security.