



Abbey Road Farm

SIP - CELEBRATE - STAY





PHOTO: CASI YOST PHOTOGRAPHY

WEDDINGS AT ABBEY ROAD FARM

Thank you for considering Abbey Road Farm for your special day! Abbey Road Farm is a working farm and winery. We offer panoramic views of the Yamhill-Carlton Valley, gorgeous manicured grounds, a state-of-the-art indoor event space with rustic farm appeal, on-site lodging and a dedicated team to help make your day amazing. Abbey Road Farm's venue is available to wine club members for rent and can accommodate ceremonies and receptions up to 200 guests.

YOUR WEDDING PACKAGE INCLUDES

(lodging is additional)

- 1-hour on property engagement photo session
- 1-hour on property for wedding rehearsal event
- Exclusive use of event area (Noon-10pm)
- (400) folding white resin chairs. (Venue to set up and break down)
- (25) 60-inch round tables (seat 8). (Venue to set up and break down)
- (5) 8-foot folding resin rectangle tables
- (5) 8-foot long wood garden tables
- (5) 36-inch round tall-boy bistro tab
- Lawn Games – giant jenga, corn hole, horseshoes and croquet
- Sting overhead lighting; oversize bulbs – movable
- (2) parking attendants – larger events may require additional attendants or Valet upgrade
- Venue Manager for all meetings, rehearsal, set up and day of wedding

places & spaces

event arena

A renovated Horse Arena makes these 6,200 square feet of indoor event space stunningly unique. Complete with floor to ceiling windows that overlook the valley, full catering kitchen, grand entryway, bride's lounge, coat check and more - this building is temperature controlled to host events year-round!



event lawn

Just steps from the Event Arena, this 5,000 square foot lawn offers breathtaking views of the valley, vineyards and hills in the background.



silo garden

Stunning panoramic views make 3,000 square feet of flat manicured lawn perfect for ceremonies and receptions with a backdrop of the Silo Suites. With blooming flora and fauna year-round, the colors are sure to bring any event to life!



other places



PHOTO: NICK HOOGEN DAM

TOOL SHED

The ultimate "Man Cave". This pole barn served as the original tool shed on property. Now converted into a classic entertaining room you will find comfy lounge furniture, rustic décor, and a custom bar. Additional per hour rental or complimentary day use for getting ready with lodging buyout.



PHOTO: CASI YOST



PHOTO: RT FAITH PHOTOGRAPHY



CELLAR ROOM

Fully enclosed and climate controlled. Complete built in wine barrel bar and buffet counter, attached catering kitchen and two restrooms this gem is perfect for bridal showers, rehearsal dinners, farewell brunches and more! Per hour rental in addition to package pricing.

wedding pricing

(Event Rental WITHOUT lodging)

Peak Season Daily Rental (May-October)

Friday-Sunday - \$9,600

Monday-Thursday - \$6,900

Off-Season Daily Rental (Nov-April)

Friday-Sunday - \$7,200

Monday-Thursday - \$5,000



PHOTO: RT FAITH PHOTOGRAPHY

Cellar Room Rental:

\$350/hour (Fri-Sun)

\$185/hour (Mon-Thurs)

4-hour minimum

Tool Shed Rental:

\$260/hour (Fri-Sun)

\$150/hour (Mon- Thurs)

2-hour minimum



PHOTO: NATE MEEDS

ELOPEMENT PACKAGE

Perfect for groups of 30 or less. Pricing includes 1 hour of set up/getting ready time, 1 hour of clean up time and 3 hours of event time. A buyout of the lodging (Silos & Ranch House) is required.

Available any day of the week except Saturday.

\$2,500

Other Fees:

\$300 - Additional Labor/Set Up – Any set up other than a ceremony or reception. Example: cocktail hour in a different location.

\$150/hour - Early access for set up or Tack Room.

lodging

SILO SUITES BED & BREAKFAST/RANCH HOUSE

Silo Suites – Converted grain silos that house one of the most unique bed & breakfasts in the country. Five suites face toward the North Valley and overlook the habitat area and famous Guadalupe Vineyard across the valley.

Ranch House – Three bedrooms, two baths a full living area and kitchen are available to rent in what was the original house on the property, now completely renovated. (Breakfast is not included.)

We can sleep a maximum of 16 guests on property.

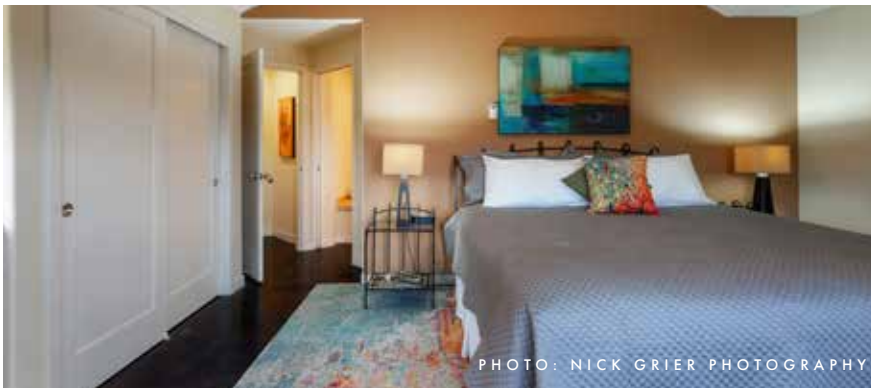
Room Blocks are available to groups who rent the property. Use of Tool Shed complimentary with lodging buyout. Two night minimum required.

Current retail rates as of 7/1/2021:

Silo Suites - \$325/night per suite Peak-Season (May-October)

\$250/night per suite Off-Season (November-April)

Ranch House - \$625/night (breakfast \$25/person)



DO I HAVE TO BE A WINE CLUB MEMBER?

Yes! The use of our facilities and gardens is exclusive to our wine club members. But don't worry, if you are not a member yet, we have four tiers to choose from that fit all tastes and budgets. Bonuses to our wine club – it ships four times a year, you will only be billed at each shipping cycle, and may include wines from any of our collective winemakers labels; we currently have 5 in rotation.

WHAT ABOUT CATERING?

Abbey Road Farm requires the use of one of our preferred caterers. We have hand-picked these caterers as the best of the best. There is a wide range of styles and price points in our concise list so it's not too overwhelming. They are all familiar with the property and offer excellent service and quality. You are not required to use the same company for food and beverage service, but BOTH are required to be served by a licensed and insured business.



DO WE HAVE TO USE VENDORS OF THE PREFERRED LIST?

The only one we require you to use is catering. All of the other vendors on the list are hand-selected partners that we know and trust and can confidently recommend for stellar product and service.

WHAT ABOUT ALCOHOL?

Abbey Road Farm requires the purchase of 1 case of our wine for every 40 guests or 3 cases for every 100 guests. Your wine club membership discount on bottle/case purchases will be applied. Outside wine, beer and liquor may be brought in addition to Abbey Road Farm wine. Any beer, wine or liquor is required to be brought in/served by a licensed company with their own business license, insurance and OLCC permit. Beer and wine can be served for the entire event, with a 2-hour limit on hard alcohol (mixed drinks only; no shots). We do allow clients to eat and drink while getting ready on property prior to the ceremony start time. Once the festivities start and the bartender is on site – you will be required to hand over all alcohol to the bartender or it must be locked away. This ensures a safe environment for you and your guests and is required by all bartending services.

WILL THE TASTING ROOM BE OPEN?

Yes, we keep regular hours; Wednesday-Sunday from 11 am-5pm. If there is an outdoor ceremony, prior to 5pm, there may be guests on the patio. We do our best separate and ask folks to be quiet. They do have their own parking lot and entrance on the south side of the building, so there is not any crossover. There is also no direct access to the event space from the tasting room.

DO YOU PROVIDE LINENS OR DECOR?

No. Our preferred caterers can add this to the full-service package they offer or you can rent them through a third party rental company. We do have items on property that can be used as well such as wine barrels, string lights, etc. Inquire with Kristen for specifics.

CAN I GET READY ON PROPERTY?

Sure! Our rental time starts at noon and you have access to the Tack Room. Our Tool Shed is complimentary with a lodging buyout or a per hour rental fee. If you need more time, there is a per hour fee; visit page five for additional charges section.



PHOTO: DIONNE KRAUS PHOTOGRAPHY

ready to book?

WE WOULD LOVE TO HELP YOU CELEBRATE!

Our next step is to get some basic information from you to put together a rental agreement. The rental agreement signed with 50% deposit will lock in your date. All lodging payments are due 12 weeks before the event. And final rental payment, wine purchase, or other charges are due two weeks prior to the event.

CONTACT

KRISTEN BAXTER - DIRECTOR OF EVENTS

CELL: 503-715-7610

EMAIL: KRISTEN@ABBeyROADFARM.COM



“Fantastic venue!

We were THRILLED to have our wedding at Abbey Road Farm last month. Kristen, the site manager, was extremely responsive, knowledgeable, and flexible in meeting our requests. She made the planning process easy and was very helpful the day of the event. Our day couldn't have been better - Abbey Road Farm made it perfect!”

- GREG & NATHAN



“Amazing Wedding Venue & Staff

We chose Abbey Road as our wedding venue and we couldn't be happier with how everything turned out. The venue is beautiful and has everything we needed to put on a great party. Kristen was easy to work with and she was available for questions every step of the way. We are so happy we chose to have our wedding at Abbey Road!”

- KAILEE & TRAVIS



“Absolutely perfect

The property and facilities at Abbey Road Farm are gorgeous and spacious. The gardens and farmland made for beautiful, dynamic photos. The views from the lawn where the ceremony was held are breathtaking. Kristen is straightforward and professional- she was a joy to work with. My husband and I couldn't have imagined a more perfect place to celebrate the best day ever! ”

- MALLORIE & GREG



“Absolutely Phenomenal

We had a very challenging year prior to working with Abbey Road (it was 2020). Kristen (venue manager) made herself very available to tend to our every need. Was flexible, accommodating, really sank into our vision, and holy smokes this venue is EXQUISITE. Our guests loved the wedding, best wedding ever, thank you so much for helping make our best day ever the best day ever.”

- TARA & DEAN



10501 NE ABBEY ROAD
CARLTON, OR 97111
WWW.ABBEYROADFARM.COM

FB: @ABBHEYROADFARMOR
INSTAGRAM: @ABBHEYROADEVENTS
@ABBHEYROADFARM