

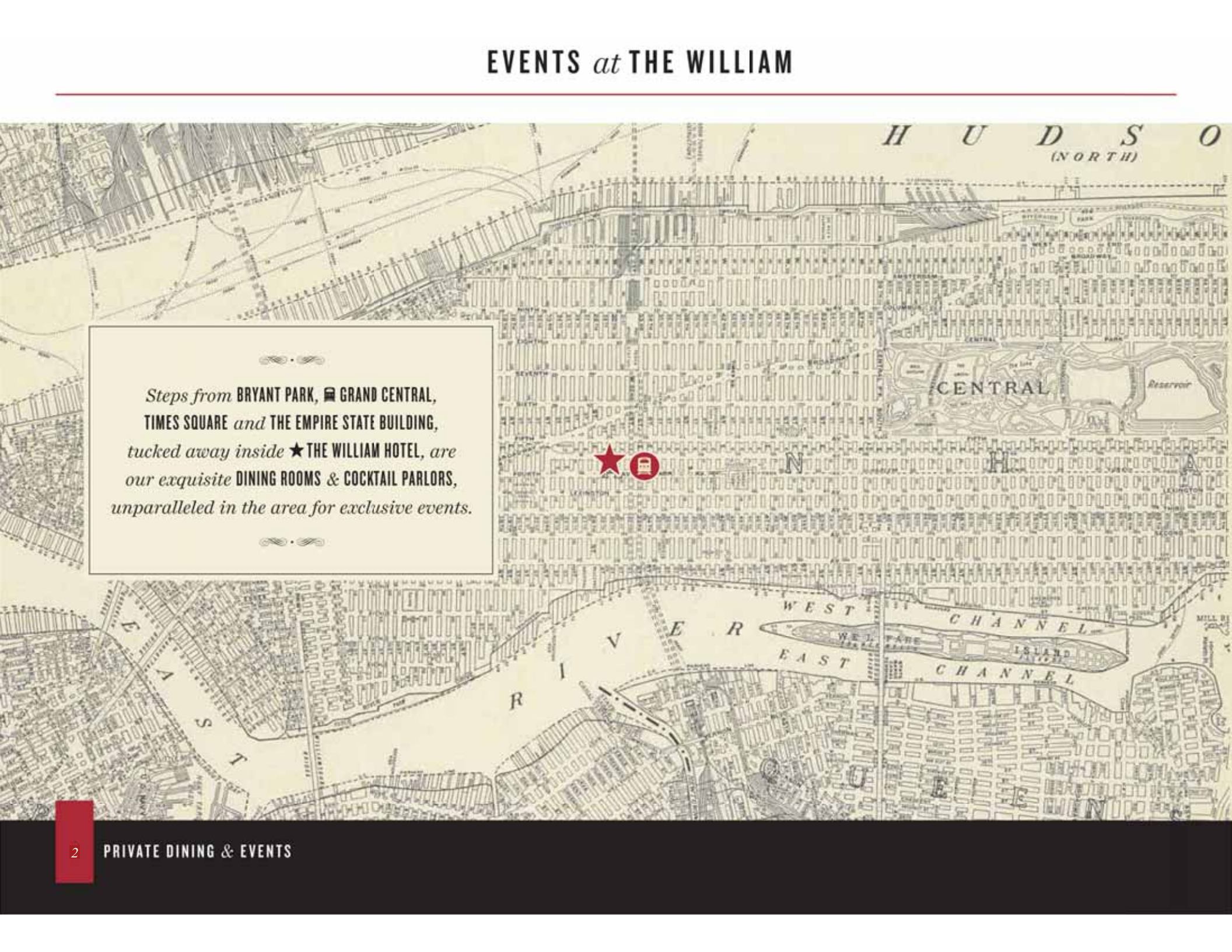
PRIVATE DINING & EVENTS

• *39th b/w park & madison, new york city* •

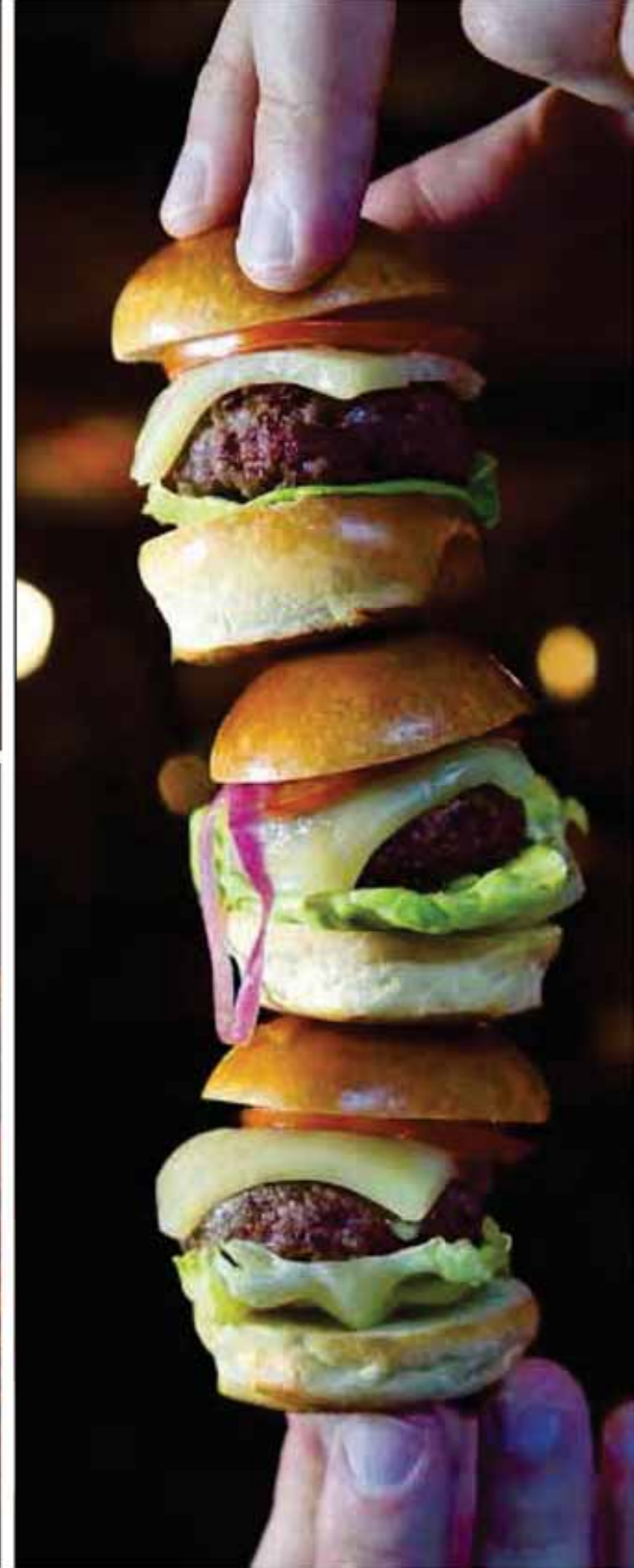
THE RAINES LAW ROOM
AT THE WILLIAM

THE SHAKESPEARE
AT THE WILLIAM

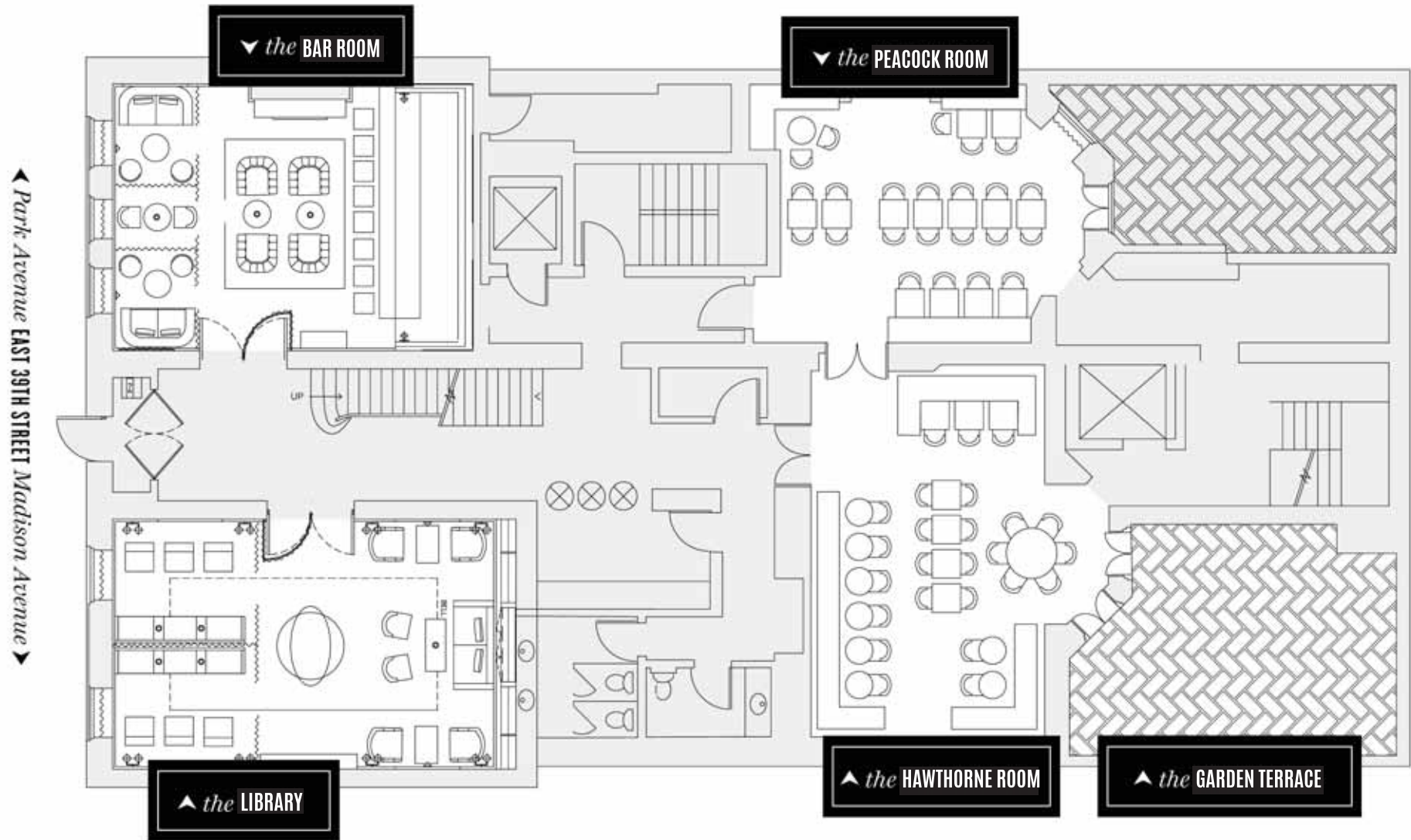
EVENTS *at* THE WILLIAM

A detailed historical map of Manhattan, New York, showing the Hudson River to the north and the East River to the south. The map features a grid of streets and various landmarks. A text box is overlaid on the left side of the map. In the center of the map, there are two red icons: a star and a building icon. The Hudson River is labeled 'H U D S O N (NORTH)' at the top, and the East River is labeled 'E A S T R I V E R' at the bottom. The Hudson River Channel is labeled 'WEST CHANNEL' and 'EAST CHANNEL'. The Central Park Reservoir is labeled 'Reservoir'. The word 'CENTRAL' is also visible on the map.

Steps from BRYANT PARK, 🚏 GRAND CENTRAL, TIMES SQUARE and THE EMPIRE STATE BUILDING, tucked away inside ★ THE WILLIAM HOTEL, are our exquisite DINING ROOMS & COCKTAIL PARLORS, unparalleled in the area for exclusive events.



FLOOR PLANS: THE RAINES LAW ROOM *at* THE WILLIAM



THE RAINES LAW ROOM *at* THE WILLIAM



Since the Raines Law Room on 17th St opened in 2009, it has become an institution in the New York speakeasy scene. Raines Law Room at The William is the sister parlor, a decadent spot where you can sip on cocktails steps from Grand Central.

FULL VENUE CAPACITY

MAXIMUM CAPACITY FOR A COCKTAIL

RECEPTION: 200 guests,
300 guests when
combined with
The Shakespeare Pub.



THE RAINES LAW ROOM *at* THE WILLIAM: *the* LIBRARY



THE LIBRARY

With its mahogany paneling, wall of books and open fireplace, the feeling here is that of stepping back in time into a luxurious salon. The perfect space to enjoy great company and perhaps an even greater cocktail.

ROOM CAPACITY

STANDING RECEPTION:
40 guests



THE RAINES LAW ROOM *at* THE WILLIAM: *the* BAR ROOM



THE BAR ROOM

Serving cocktail classics as well as our own signature creations, The Bar Room with cozy lounge furniture by a marble fireplace, is a welcome respite from the city streets.

ROOM CAPACITY

STANDING RECEPTION:
30 guests



THE RAINES LAW ROOM *at* THE WILLIAM: *the* PEACOCK ROOM



THE PEACOCK ROOM

Lavish peacocks adorn the walls and wood paneling wraps the room. Our most intimate space for any occasion.

EVENTS

The Peacock Parlor is the perfect backdrop for receptions, cocktail classes and tastings, working luncheons & dinners, birthday parties, milestone celebrations, bridal & baby showers.

AVAILABILITY

The Peacock Parlor is available for private receptions and dining seven days a week all year round.

CAPACITY

ONE TABLE: 18 guests

MAXIMUM SEATED CAPACITY: 25 guests

STANDING RECEPTION: 40 guests

THE RAINES LAW ROOM *at* THE WILLIAM: *the* HAWTHORNE ROOM



THE HAWTHORNE ROOM

A superb flexible space for cocktail receptions, seated dinners or showers.

EVENTS

As the largest of the rooms, The Hawthorne Room offers flexibility for layout and function.

CAPACITY

ONE TABLE: 22 guests
MAXIMUM SEATED CAPACITY: 40 guests
STANDING RECEPTION: 60 guests

COMBINED CAPACITY

The Hawthorne Room and Peacock Parlor can be utilized together as a fluid event space.

MAXIMUM SEATED CAPACITY: 64 guests STANDING RECEPTION: 100 guests

THE RAINES LAW ROOM *at* THE WILLIAM: *the* GARDEN TERRACE



THE GARDEN TERRACE

During the warmer months, you may consider hosting relaxing brunches, luncheons and post-work cocktail gatherings in this splendid spot. Make use of our large projection screen and host an al fresco working lunch.

CAPACITY

MAXIMUM SEATED CAPACITY:

28 guests

STANDING RECEPTION:

30 guests

AVAILABILITY

The Garden Terrace is available weather permitting.

the SHAKESPEARE PUB *and the* ABINGDON ROOM



▲ THE SHAKESPEARE PUB

A fabulous range of draft and cask ales are housed in our main bar area of The Shakespeare. The traditional social spot for all celebrations and festivities, boisterous, warm and welcoming. Available as a private space in conjunction with The Abingdon Room.

— CAPACITY

STANDING RECEPTION:

75 guests

THE ABINGDON ROOM ▲

Located on the lower level of The Shakespeare, The Abingdon Room has a separate entrance with a more casual atmosphere akin to a 16th century English pub found in Shakespeare's hometown, Stratford-Upon-Avon. A great space for a team meeting and happy hours.

— CAPACITY

STANDING RECEPTION:

25 guests

THE RAINES LAW ROOM

AT THE WILLIAM

PRIVATE EVENTS INQUIRIES

To inquire about hosting a private event, please schedule a site visit or submit a request for a proposal.

SCHEDULE
A VISIT

REQUEST FOR
PROPOSAL