



506 South Grand Avenue, Los Angeles, California 90071 USA

T +1 213.624.1011 F +1 213.612.1545 E [biltmore.us@millenniumhotels.com](mailto:biltmore.us@millenniumhotels.com) W [www.millenniumhotels.com](http://www.millenniumhotels.com)

GDS Chain Code: MU Amadeus: LAXRHB Galileo: 75940 Sabre: 25650 Worldspan: RLAXB

## MEETINGS AND EVENTS

- 70,000 square feet of flexible meeting, function and exhibit space
- 18 meeting, function and exhibit spaces
- Five ballrooms including two notable venues in Oscar history: the Crystal Ballroom and Biltmore Bowl; many featuring historic, elegant interiors with hand-painted ceilings, columned archways, balconies, magnificent chandeliers and wood-paneled walls
- Regency offers 16,800 square feet of exhibit space
- Executive and private office space and a boardroom for confidential meetings
- Ideal filming location with iconic architecture offering 16,000 square feet of divisible production offices
- Pre-function space
- Dedicated catering and events team
- Customized food and beverage offerings
- On-site dedicated audiovisual and production support

## AMENITIES AND SERVICES

- 683 elegantly renovated guest rooms including 60 suites
- Five unique venues include Smerald's, Bugis Street Brasserie, Gallery Bar & Cognac Room, Rendezvous Court Café grab 'n' go specialties, and Rendezvous Court traditional Afternoon Tea service.
- Complimentary Wi-Fi
- Valet parking
- Laundry and dry cleaning
- 24/7 self-service business center, 24/7 club lounge
- 24/7 fitness center, sauna, steam room and hot tub
- Safe deposit box, in-room safes
- Gift shops, concierge
- Award-winning Ask Alfred children's program



Gold Ballroom



Biltmore Bowl

ROOM	FLOOR	AREA (SQ. FT.)	HEIGHT (FT)	LENGTH X WIDTH (FT)	THEATER	U-SHAPE	CLASSROOM	RECEPTION	CONFERENCE	ROUNDS
ROMAN	Mezzanine	1,128	19	22 x 46	125	40	55	125	38	80
CORINTHIAN	Mezzanine	1,128	19	22 x 46	125	40	55	125	38	80
GRECIAN	Mezzanine	506	11	20 x 22	25	18	20	30	15	30
ATHENIAN	Mezzanine	805	11	36 x 22	75	32	45	100	30	60
MOROCCAN	Mezzanine	480	9	29 x 16	40	22	24	50	24	30
FLORENTINE	Mezzanine	384	9	21 x 15	30	18	15	20	16	20
CORSICAN	Mezzanine	448	9	26 x 15	30	20	20	20	18	20
CORDOBAN	Mezzanine	728	10	26 x 27	70	26	35	60	26	60
MEDITERRANEAN	Mezzanine	666	11	35 x 17	50	28	30	50	26	50
BERNARD'S	Ground Level	3,564	12	81 x 44	126	40	75	175	38	190
HEINSBERGEN ROOM	Lobby	4,758	10	61 x 62	200	50	100	300	48	250
GOLD BALLROOM	Main Lobby	5,940	23	66 x 90	300	64	180	350	60	300
EMERALD BALLROOM	Main Lobby	5,454	24	90 x 54	300	80	170	350	76	250
CRYSTAL BALLROOM	Main Lobby	6,300	29	90 x 70	600	82	320	800	80	500
TIFFANY ROOM	Main Lobby	4,224	17	75 x 48	200	68	90	300	64	150
BILTMORE BOWL	B4	11,546	14	75 x 125	950	120	480	1000	100	800
MILLENNIUM BOARDROOM	11th Floor	2,400	11	24 x 38	60	34	35	85	28	60
REGENCY ROOM	B3	16,800	9	136 x 120	600	60 x 2	400	1000	80 x 2	900



Athenian



Emerald Ballroom

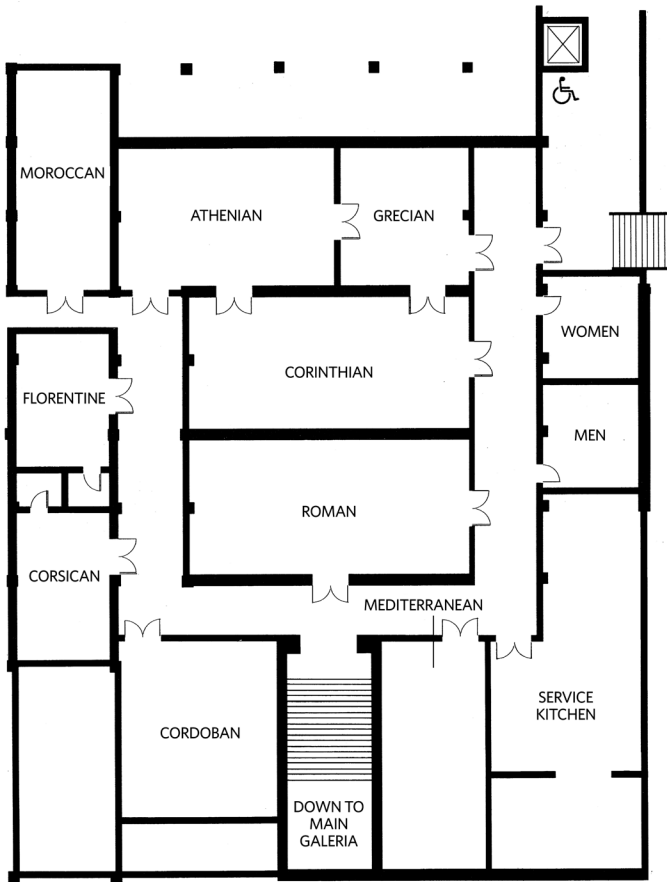


Heinsbergen Room

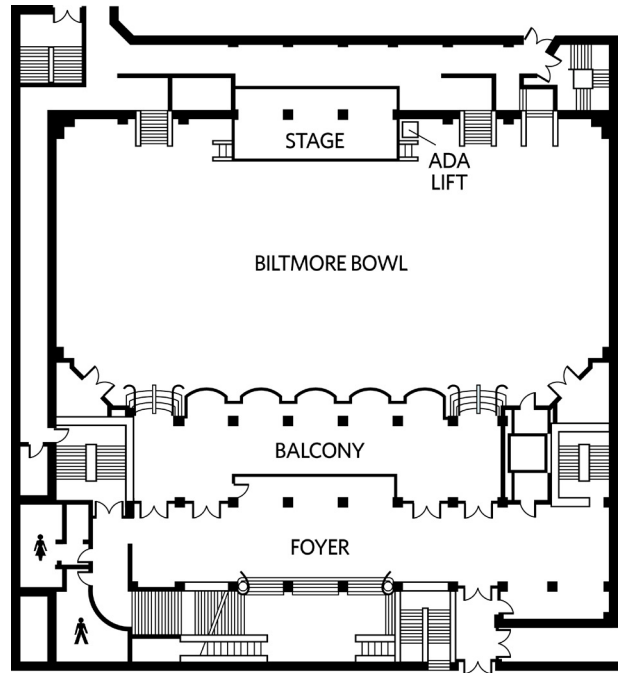


Tiffany Room

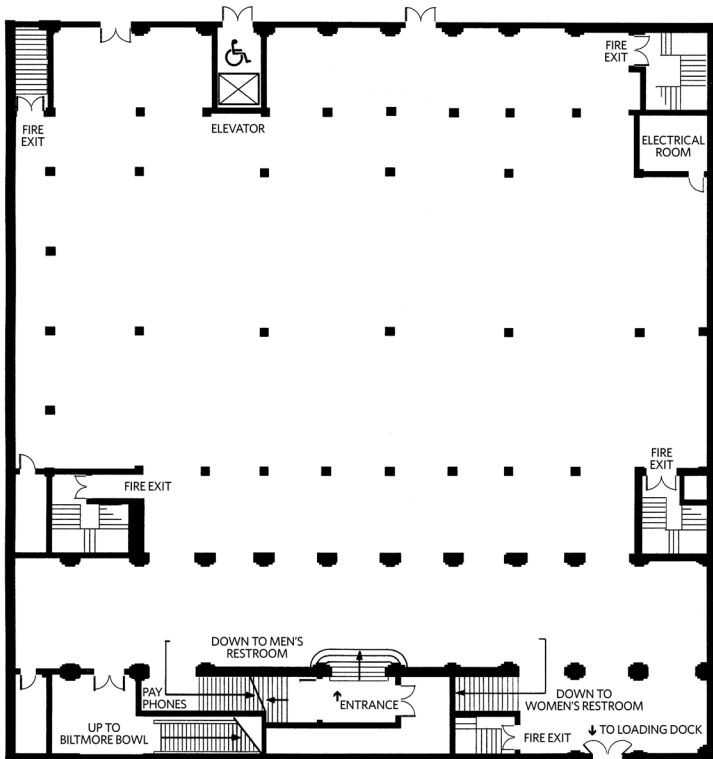
**CONFERENCE ROOM AND MEZZANINE**



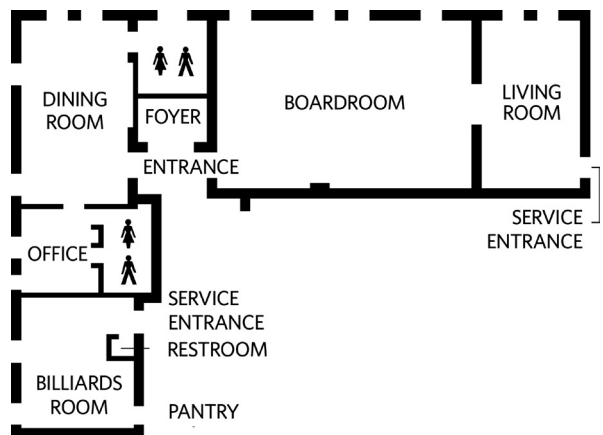
**BILTMORE BOWL**



**REGENCY ROOM**



**BILTMORE BOARDROOM**





**GALERIA**

